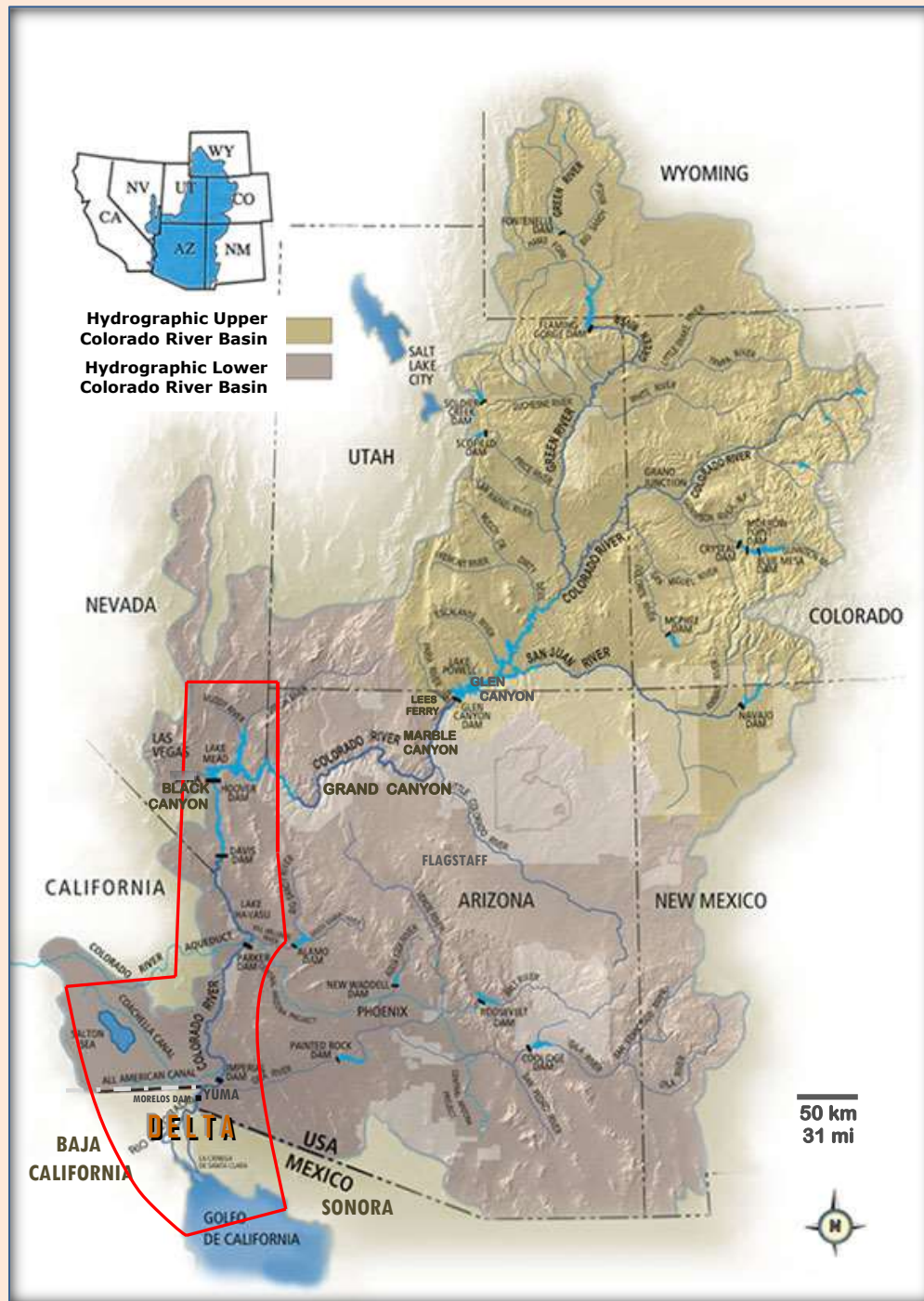


GEOGRAPHICAL COVERAGE LOWER COLORADO RIVER REGION



— Approximate geographical area of the “LOWER COLORADO RIVER REGION” as defined by and covered in *THE GRAND CANON*. The boundary in the Gulf of California encompasses Mexico’s Reserva de la Biosfera Alto Golfo de California y Delta del Río Colorado and in Sonora embraces part of Reserva de la Biosfera del Pinacate y Gran Desierto. (Refer also to the [separate map at the beginning of Part 12.](#))

Base map of Colorado River drainage basin modified from U.S. Bureau of Reclamation, Glen Canyon Dam Adaptive Management Group. The Upper and Lower Colorado River Basins delineate the apportionment of the waters of the Colorado River basin by the Colorado River Compact of 1922; divided just downstream from the confluence of the Paria River near Lees Ferry. Dams and impoundments are indicated on the map. Lighter-gray areas, not labeled, are American Indian reservations. Basin boundary is not depicted in Mexico. See “Geographical Coverage” section within the introductory text for a map that delineates the natural [Colorado River delta](#) (*INTRODUCTION PAGE 86*). See also [two maps](#) that appear after the notes that follow below.