

Genealogy and Historical Notes of Spamer and Smith Families of Maryland

Appendix 1.
The Martel and Blouin Families
of Québec and New England

Martel and Blouin emigrants to Québec from France, 1664–1665
Blouin and Martel emigrants to U.S. from Canada, ca. 1900

NEW EDITION

Containing
Additions & Corrections to June 2011
and with Illustrations

Earle E. Spamer

2008 / 2011

Note

The “New Edition” includes hyperlinks embedded in boxes throughout the main genealogy. They will, when clicked in the computer’s web-browser environment, automatically redirect the user to the pertinent additions, emendations and corrections that are compiled in the separate “Additions and Corrections” section.

Boxed alerts look like this: [Also see Additions & Corrections](#) [In the event that the PDF hyperlink has become inoperative or misdirects, refer to the appropriate page number as listed in the Additions and Corrections section.]

The “Additions and Corrections” document is appended to the end of the main text herein and is separately paginated using Roman numerals. With a web browser on the user’s computer the hyperlinks are “live”; the user may switch back and forth between the main text and pertinent additions, corrections, or emendations. Each part of the genealogy (Parts I and II, and Appendices 1 and 2) has its own “Additions and Corrections” section.

The main text of the New Edition is exactly identical to the original edition of 2008; content and pagination are not changed. The difference is the presence of the boxed “Additions and Corrections” alerts, which are superimposed on the page and do not affect text layout or pagination. The reason why the text itself was not updated is because the Comprehensive Index, more than 300 pages, is keyed to the original edition.

The alert notices will print if you print from the main genealogy, which you may then use with a printed copy of the “Additions and Corrections”.

The CD (or DVD) containing digital copies of this genealogy also includes documents that were not originally available when the genealogy was prepared in 2008. See the Disk Content Guide.

Special Note Regarding Pagination: The boxed “Also see Additions & Corrections” alerts are placed where they are needed in the main text. Upon reading the “Additions and Corrections”, however, the page number indicated for the emendation may (very infrequently) be off by one page as compared to where the boxed alert is placed. For example, a text comment in the “Additions & Corrections” may refer to page 58, but the corresponding alert box, in its proper place in the text, may be on page 59.

The cause of these minor offsets, when they do occur, is due to the fact that different versions of one word processing programs were used to create some of the new additions and corrections. These different versions occasionally altered page breaks and footnote placements that affected the page layout. The effect is *not* cumulative through the document; occurrences of offset page notations are very infrequent.

In similar fashion, the “Comprehensive Index” that was created from the original edition of 2008, for use principally with the printed versions of this document, likewise may experience infrequent one-page offsets between page numbers cited and actual page numbers.

Contents of Appendix 1

Introduction to Appendix 1	5
 <u>Section A.</u> Descendants of Jean Martel (ca. 1587–)	 9
Generation No. 1	9
Generation No. 2	9
Generation No. 3	10
Generation No. 4	11
Generation No. 5	12
Generation No. 6	13
Generation No. 7	13
Generation No. 8	14
Generation No. 9	15
Generation No. 10	15
Generation No. 11	18
Generation No. 12	35
Generation No. 13	52
Generation No. 14	56
 <u>Section B.</u> Descendants of François Xavier Blouin (1812/13–1886)	 59
Generation No. 1	59
Generation No. 2	59
Generation No. 3	61
Generation No. 4	62
<hr/>	
COLLATERAL FAMILY GENEALOGIES	
Labrie	24
Arnold	26
Sylvester	38
Kears	40
Sayres	42
Wilkins	47

Illustration pages in this document were originally prepared for placement within the printed version, which was produced on double-sided sheets. In repositioning them in this digital document, pagination for these illustration pages may not follow perfectly in order; for example, illustration page 28A may precede page 28. The illustration pages appear in proper positions in this digital document.

Introduction to Appendix 1

Our MARTEL AND BLOUIN FAMILIES emigrated from Québec, Canada, to the New England section of the United States during the late 1800s and early 1900s. Of the Blouin family, nothing has been determined regarding its origins, presumably in France. The Martel family, from France, traces its American origins to Honoré Martel dit Lamontagne and Marguerite Mireault, both of France, who married in Québec in 1668.

The early part of the Blouin lineage, and all of the Martel lineage up to the late 1800s, as listed in these genealogies, are from the genealogical work of André Martel of Montréal, who provided this information in 2004. Information about some of the more recent Martel relations, including the Labrie family, were sent to me by Sharon (Martel) Latture of Dover, New Hampshire. [Also see Additions & Corrections](#)

While Blouin is not a too common surname, still relatively little is known about them in our family. This is due to the few number of Blouins who seem to have come to the U.S. at the time when Arthur Blouin (my grandfather) arrived, and the fact that he died young. Martel, on the other hand, is a common name. Many of the modern Martels, particularly of Québec, can trace their ancestry to 17th century progenitor and immigrant, Honoré Martel dit Lamontagne, whose extensive descendancy is widely acknowledged.

Despite a broad understanding of some lineages, like the Martels, the current sketches depend upon the inferential reliability of previously researched data, and thus they must be treated as a *working document*, which future genealogists and historians can use as a baseline for further scrutiny. This is a tool, not gospel. Much of it is reliable, but inasmuch as portions of it rely upon data that may not necessarily have been correct, or perhaps adopted from an unwitting misstep in the research of public records, the user should be alert to the possibility of error.

At the other end of genealogical research—the tips of the branches—there is a profusion of living individuals about whom only names and dates (and sometimes only names) are given here. The modern generations are the most troublesome for a current genealogy; they constantly grow, and the tree is forever outdated. The children, grandchildren, even great-grandchildren of living individuals are so numerous and far-flung that the very existence of some of them are not known to a genealogy's compiler. The task of making the genealogy “current” by ensuring that the present generations are complete, and by adding the next generations, will have to be another person's work. The current genealogy is more useful for understanding the individuals and structure of the family tree about through the mid-20th century.

That much said, I feel that it is necessary to insert subjective comments about the reliability of some of the data presented here; these will be found throughout the genealogy. My comments

on the data provided by the family genealogists are based on my understanding of their relationship to their family sources and the capability of the researchers who provided details from archived public records. My own additions, which take up a large portion of the genealogy, are based on records searches made in publications but taken substantially from Internet websites, which include public records as well as personal data provided by independent genealogical researchers. I discuss my sources of data more fully in the Introduction.

Genealogical research, especially in the years prior to the development of the Internet that made available tremendous resources of the World Wide Web, was a painstaking process. It required exhaustive correspondence with relations and descendants, in addition to public records searches with the benefit only of published and card file indices.

Finally, a note about Lowell, Massachusetts is in order here, rather than at an arbitrary place in the explanatory notes in the genealogy that follows. The city is important in the history of New England, for its position as an important commercial center as a heavily industrialized textile mill town and for its cultural position in the rights of laboring workers. Henry David Thoreau called Lowell the “Manchester of America”, referring to the hugely prosperous (and equally polluted and enslaving) mill town of England. So much American history revolves around Lowell, its merchant magnates and teeming mills, that it will suffice to point out that now a large portion of the downtown area of Lowell is administered by the National Park Service as the Lowell National Historical Park. The Park Service’s museum exhibit depicts the eras of change in Lowell, which serve here as a superficial summary of the city’s development:¹

Dawn of an Era (1790–1823). This exhibit portrays the factors which contributed to the transformation of East Chelmsford into the industrial city of Lowell.

Wheels of Change (1790–1893) . . . tracing the 19th century development of the United States economy from an agrarian, decentralized system to an industrial capitalist system, and the conflicts that ensued.

Lowell’s Heyday (1823–1924). This large section features machinery, products, and profiles of mill workers as it interprets Lowell’s golden era View original machines that interpret the cotton manufacturing process from raw cotton to finished cloth.

Lowell in Decline (1924–1974) . . . the decline and closing of Lowell’s textile mills.

Lowell Today (1980–).

Almost every family member who is noticed here as having worked in the mills labored in one or more of several huge mills that lined the Merrimack River, the so-called “Mile of Mills”. They were here during the peak of the “heyday”, and their migration away from Lowell or move to farming occupations is noticeably coincident with the end of that era in the 1920s. However, in just which mills an individual worked is not now known.

¹ Quoted from “Boott Cotton Mills Museum Guide”, Lowell National Historical Park brochure, acquired 2005.

Ironies abound in comparing or imagining the differences between the mill town of a century ago to today. Some of the mills, including the historic Boott Cotton Mills, have been converted into condominiums, commanding costs that would have been unimaginable to the workers who toiled and were sickened in what now are living rooms and bedrooms with views of the Merrimack River. The National Park Service operates the Boott Cotton Mills Museum in a part of the old mill, which includes a raucous operating weave room. Ear plugs are offered to visitors, unlike anything even considered for our ancestors. Even so, only a few looms work at a time; the cacophony and racket of a century ago remain out of reach of our senses. The air has none of the fine mist of cotton fibers that mill workers breathed during long days. In the museum's gift shop a few woven products of the Park Service looms are sold—trinkets as compared to the huge bolts woven by the ton a century ago. The sight of a few uniformed National Park Service workers operating the looms (where once had worked hundreds) caps the incongruous nature of this working museum. Despite the pared down correspondences, the Park Service's museum is a fair way to imagine a little bit of the conditions under which our ancestors worked.



Family photo albums and boxes of loose photos (now organized and cataloged) have documented many of the people, places, and times of the Martel and other families who immigrated to the environs of the mill town of Lowell, Massachusetts, where they resided also in nearby New Hampshire. Although efforts were made by Earle Spamer to identify some of these photos with his mother and grandmother during the 1960s–1970s, many of the identifications were by then lost to memory. Yet the photos still record times and places that are long gone, and they are of historical and cultural interest. Some of the unidentified photographs—all of which once had significance to members of the family and are now forgotten—are shown on the following pages.



(Spamer 1099)

Unidentified town, including a relatively small mill in the distance. Note the mountainous terrain in background.



(Spamer 1107)



(Spamer 1123)



(Spamer 1111)

Notice that the two photographs at *right* were taken in the same photographic studio.



(Spamer 1116)

Unidentified photographs of historical and cultural interest



(Spamer 1140)

Appendix 1 : Martel–Blouin Family Genealogy : page 7C



(Spamer 1116)



(Spamer 1140)

The photograph at *left* was taken alongside one of the mill canals in Lowell, Massachusetts. The young man is a telegram messenger.

Section A

Descendants of Jean Martel (ca. 1587–)²

(220 descendants)

Generation No. 1

1. Jean¹ Martel was born about 1587 in Dauphine, France, and died in France. He married **Anne Marizy** 11 January 1611/12 in St-Eustache, Paris, France, daughter of Charles Marizy and Marie Prouirant. She was born about 1590.

Child of Jean Martel and Anne Marizy is:

+ 2 i. Jean² Martel dit Lamontagne, born 1615 in St-Eustache-de-Paris, Ile-de-France, France.

Generation No. 2

2. Jean² Martel dit Lamontagne (Jean¹ Martel) was born 1615 in St-Eustache-de-Paris, Ile-de-France, France. He married **(1) Barbe Marie Duchesne** about 1630 in St-Eustache, Paris, France. She was born about 1610. He married **(2) Francoise Perrot** 28 July 1652 in Seine, Paris, France.

Child of Jean Martel dit Lamontagne and Barbe Duchesne is:

+ 3 i. Honoré³ Martel dit Lamontagne, born about 1632 in St-Eustache, Paris, France; died 28 July 1710 in Québec.

² Data for Martel Generations 2-9 were provided by André Martel based on records searches made by him in Québec in 2004 (correspondence, A.M. to E.E.S.). I have added a few extraneous facts from research conducted since then. Extended genealogies of most of the individuals of the early generations are omitted so as to provide the direct lineage in a more concise fashion. The ancestral connection to Jean Martel [No. 1] of France is from "Descendants of Jean Martel of Paris", located at website <http://www.geocities.com/fraserclangeo/nti01128.htm> (accessed 8 Mar 2004). Numerous sources in addition to the data provided by André Martel also partly corroborated this genealogy, including the website <http://www.grandesfamilies.org/martel> (accessed 8 Mar 2004).

Generation No. 3

3. Honoré³ Martel dit Lamontagne (Jean², Jean¹ Martel) was born about 1632 in St-Eustache, Paris, France, and died 28 July 1710 in Québec. He married **(1) Marguerite Mireault (or Lamirault or L'Amirault)** 26 November 1668 in Québec (Cathedral Notre-Dame), daughter of François Mireault/Lamirault/L'Amirault and Jeanne Clos. She was born about 1645 in St-Germain l'Auxerrois, Paris, France, and died 17 October 1706 in Québec. He married **(2) Marie Marchand** 03 November 1707 in Québec (Cathedral Notre-Dame). She was born about 1630 in Notre Dame, Montreal.

Children of Honoré Martel dit Lamontagne and Marguerite Mireault are:

- + 4 i. Paul⁴ Martel, born 24 May 1678 in Québec; died 27 May 1723 in St-Antoine-Tilly, dio. Québec.
- 5 ii. Charles Martel, born 04 October 1669 in Québec; died 27 October 1669 in Québec.
- + 6 iii. Jean/Jean-François Martel, born 04 January 1670/71 in Québec; died 14 March 1714/15 in Québec (Hotel-Dieu Hospital).
- + 7 iv. Joseph-Alphonse Martel, born 12 May 1672 in Québec; died 30 December 1741 in Montréal (St-François-d'Assise).
- 8 v. Marie-Madeleine Martel, born 29 July 1674 in Québec; died 02 January 1702/03 in Québec. She married Louis Loiselle 12 June 1696 in Québec (Cathedral Notre-Dame).
- 9 vi. Marie-Marguerite Martel, born 29 August 1676 in Québec. She married (1) Louis Coulon-Courraud 10 January 1694/95 in Québec (Cathedral Notre-Dame). She married (2) François Douault 26 January 1703/04.
- 10 vii. Honoré Martel, born 06 February 1679/80 in Neuville, dio. Québec; died 18 February 1679/80 in Neuville, dio. Québec.
- 11 viii. Antoine Martel, born 07 January 1680/81 in Neuville, dio. Québec; died 17 March 1759 in St-Pierre-d'Orléans, dio. Québec. He married Catherine Guillot 15 November 1706 in St-Pierre d'Orleans, dio. Québec.
- 12 ix. Isabelle Martel, born 25 November 1682 in Neuville, dio. Québec; died 28 November 1682 in Neuville, dio. Québec.
- 13 x. Marie-Anne Martel, born 08 November 1683 in Neuville, dio. Québec; died 21 February 1702/03 in St-Antoine-Tilly, dio. Québec. She married Charles Rognon-Laroche 09 November 1699 in Québec (Cathedral Notre-Dame).
- 14 xi. Jean-Baptiste Martel, born 13 November 1685 in Neuville, dio. Québec; died 21 September 1762 in Baie-St-Paul, dio. Québec. He married (1) Jeanne/Marie Roulois 27 June 1712 in Château-Richer (La Visitation de Notre-Dame), dio. Québec. He married (2) Marie-Anne Simard 01 May 1723 in Baie-St-Paul. He married (3) Marie-Josèphe Lavoie 05 June 1732 in Baie-St-Paul, dio. Québec.
- 15 xii. Louis Martel, born 01 September 1687 in Neuville, dio. Québec.
- 16 xiii. Marie-Anne Martel, born 28 August 1689 in Québec. She married Thomas Ferré 29 August 1708 in Québec (Cathedral Notre-Dame).
- 17 xiv. Marie-Thérèse Martel, born 04 September 1691 in Québec. She married Guillaume Hoguenet-Argencour 03 September 1714 in Québec (Cathedral Notre-Dame).

NOTES

Honoré Martel dit Lamontagne (ca. 1632–1710) [No. 3] was a soldier who emigrated from France to Gaspé aboard the ship *La Brézé*, sailing from La Rochelle 26 February 1664, to Guadeloupe 25 April

1665, arriving in Gaspé 30 June 1665.³ He is generally considered to be the progenitor of many of the Martels now living in America.

Marguerite Mireault (also spelled Lamirault or L'Amirault) (ca. 1645–1706), wife of Honoré Martel dit Lamontagne, was a *Fille du Roi*⁴, a marriageable woman sent from France to Québec.

Generation No. 4

4. Paul⁴ Martel (Honoré³ Martel dit Lamontagne, Jean², Jean¹ Martel) was born 24 May 1678 in Québec, and died 27 May 1723 in St-Antoine-Tilly, dio. Québec. He married **Marie-Madeleine Guillot** 25 November 1698 in St-Pierre d'Orleans, dio. Québec, daughter of Vincent Guillot and Isabelle Blais. She was born 16 February 1680/81 in Ile-d'Orléans (Ste-Famille), dio. Québec.

Children of Paul Martel and Marie-Madeleine Guillot are:

- | | | |
|------|-------|---|
| 18 | i. | Catherine ⁵ Martel. |
| 19 | ii. | Louis Martel. He married (1) Marie Légaré 29 October 1732 in Château-Richer (La Visitation de Notre-Dame), dio. Québec. He married (2) Marie-Angélique Devoyaux 01 March 1756 in Pierrefonds (Ste-Geneviève), dio. Montréal. |
| 20 | iii. | Marie-Charlotte Martel. |
| 21 | iv. | Marie-Dorothee Martel. |
| 22 | v. | Marie-Madeleine Martel. She married Gervais Grenier. |
| 23 | vi. | Prisque Martel. |
| 24 | vii. | Marie-Madeleine Martel, born 03 November 1699 in St- Pierre, Ile de Orleans, Québec. |
| 25 | viii. | Augustin-Louis Martel, born 28 August 1701 in St-Nicholas, Levis, dio. Québec. |
| + 26 | ix. | Paul Martel, born 18 October 1702 in Neuville, Portneuf, dio. Québec. |
| 27 | x. | Jacques Martel, born 10 November 1704 in St-Nicholas, Levis, dio. Québec; died 15 January 1776 in Vaudreuil-Dorion (St-Michel), dio Valleyfield. He married (1) Marie-Elisabeth Rondeau 17 February 1726/27 in St-Antoine-Tilly, dio. Québec; born 06 August 1706 in St-Antoine de Tilly, Lotbiniere, dio. Québec; died about 05 February 1738/39. He married (2) Marie-Angélique Rognon-Laroche-Houle 08 June 1743 in Ste-Croix, dio Québec. |
| 28 | xi. | Marie-Louise Martel, born 10 November 1704 in St-Nicholas, Levis, dio. Québec; died 25 November 1704 in St-Antoine de Tilly, Lotbiniere, Québec. |
| 29 | xii. | Gabriel/Michel-Gabriel Martel, born about 29 July 1711 in St-Nicolas, Levis, dio. Québec. He married Geneviève Lefebvre-Descoteaux-Senneville 27 November 1741 in Baie-du-Febvre (St-Antoine-de-Padoue), dio. Nicolet. |
| 30 | xiii. | Charles-Augustin Martel, born 01 September 1717 in St-Antoine de Tilly, Lotbiniere, Q. He married Geneviève Desrochers-Lafrenière 16 January 1754 in Baie-du-Febvre (St-Antoine-de-Padoue), dio. Nicolet. |
| 31 | xiv. | Marie-Angelique-Charlotte Martel, born 01 September 1717 in St-Antoine de Tilly, Lotbiniere, Québec. |
-

³ See for example, "The Carignano Salières Regiment", website of La Société des Filles du roi et soldats du Carignan, Inc., Chantilly, Virginia, <http://www.fillesduroi.org/regiment/regiment.html> and further links (accessed 9 Mar 2004).

⁴ See for example, Juliana L'Heureux, "Les Filles du Roi", website <http://www.mainewriter.com/articles/Filles-du-Roi.htm>; and website of La Société des Filles du roi et soldats du Carignan, Inc., Chantilly, Virginia, <http://www.fillesduroi.org/regiment/regiment.html> and further links (both accessed 9 Mar 2004).

6. Jean/Jean-François⁴ Martel (Honoré³ Martel dit Lamontagne, Jean², Jean¹ Martel) was born 04 January 1670/71 in Québec, and died 14 March 1714/15 in Québec (Hotel-Dieu Hospital). He married **Marie-Madeleine Vanier-Fontaine** 14 February 1694/95 in Charlesbourg, dio. Québec, daughter of Guillaume Vanier and Madeleine Bailly. She was born 03 January 1674/75.

Children of Jean/Jean-François Martel and Marie-Madeleine Vanier-Fontaine are:

- 32 i. Charles⁵ Martel.
 - 33 ii. Jean-Francois Martel. He married Marie-Marguerite Lalande.
 - 34 iii. Pierre Martel. He married Marie-Marguerite Bergevin.
 - 35 iv. Joseph Martel. He married Marie-Agnes Paquet.
 - 36 v. Catherine Martel.
 - 37 vi. Jean-Baptiste Martel.
 - 38 vii. Genevieve Martel.
 - 39 viii. Marie-Madeleine Martel.
-

7. Joseph-Alphonse⁴ Martel (Honoré³ Martel dit Lamontagne, Jean², Jean¹ Martel) was born 12 May 1672 in Québec, and died 30 December 1741 in Montréal (St-François-d'Assise). He married **Marguerite Métivier-Grenier/Gronier** 08 January 1700/01 in Ile-d'Orléans (Ste-Famille), dio. Québec, daughter of Nicolas Groinier and Marie Bouet.

Children of Joseph-Alphonse Martel and Marguerite Métivier-Grenier/Gronier are:

- 40 i. Joseph-Alphonse⁵ Martel. He married Marie-Joseph Drogue-Brouillet.
 - 41 ii. Marguerite Martel.
 - 42 iii. Claude-Honore Martel. He married Marguerite Lehou.
 - 43 iv. Pierre Martel. He married Marie-Anne Roy.
 - 44 v. Rosalie Martel. She married Claude Goguet.
 - 45 vi. Antoine Martel.
 - 46 vii. Jean Martel. He married Marie-Francoise Dufresne.
 - 47 viii. Marie-Joseph Martel. He married Marie-Marguerite Janot.
 - 48 ix. Agathe Martel. She married Antoine Tessier.
 - 49 x. Marguerite Martel. She married Antoine Charpentier.
-

Generation No. 5

26. Paul⁵ Martel (Paul⁴, Honoré³ Martel dit Lamontagne, Jean², Jean¹ Martel) was born 18 October 1702 in Neuville, Portneuf, dio. Québec. He married **Marie-Geneviève Houde** 22 October 1724 in Ste-Croix, dio Québec, daughter of Gervais Houde and Anne-Catherine Boisvert-Denevers. She was born about 1698, and died 04 March 1778 in Ste-Croix, dio Québec.

Children of Paul Martel and Marie-Geneviève Houde are:

- + 50 i. Jacques⁶ Martel, born 28 July 1728 in St-Antoine-Tilly, dio. Québec.
- 51 ii. Marie-Barbe Martel, born 25 September 1727. She married Pierre Lemay 07 April 1750 in St-Antoine-Tilly, dio. Québec.
- 52 iii. Marie-Josèphe Martel, born 08 August 1731 in Ste-Croix, dio. Québec. He married Jean-Baptiste Collet 24 September 1753 in Ste-Croix, dio. Québec.
- 53 iv. Marie-Anne Martel, born 19 April 1733 in Ste-Croix, dio. Québec. She married Louis Demers-Dumais 02 October 1752 in Ste-Croix, dio. Québec.

Genealogy of the Martel and Blouin Families of French Canada and New England

- 54 v. Marie-Geneviève Martel, born 03 August 1736. She married François Denevers-Boisvert 19 August 1754 in Ste-Croix, dio Québec.
 - + 55 vi. Paul Martel, born 15 September 1738 in Ste-Croix, dio Québec.
 - 56 vii. Joseph/Marc-Joseph Martel, born 27 April 1742 in Ste-Croix, dio Québec. He married Marie-Josèphe DeHorne-Laneuville 21 July 1760 in Bécancour (Nativité), dio. Nicolet.
-

Generation No. 6

50. Jacques⁶ Martel (Paul⁵, Paul⁴, Honoré³ Martel dit Lamontagne, Jean², Jean¹ Martel) was born 28 July 1728 in St-Antoine-Tilly, dio. Québec. He married **Marie-Charlotte Legendre** 18 October 1745 in Ste-Croix, dio Québec. She was born 1728.

Children of Jacques Martel and Marie-Charlotte Legendre are:

- + 57 i. Joseph⁷ Martel.
 - 58 ii. Jacques Martel, born 28 December 1746 in Ste-Croix, dio. Québec. He married Marie-Louise Lemay 20 November 1769 in Lotbinière (St-Louis), dio. Québec.
 - 59 iii. Louis Martel, born about 1757; died 27 September 1837 in St-François-du-Lac, dio. Nicolet. He married (1) Victoire Gauthier 01 September 1794 in Ste-Croix, dio Québec. He married (2) Marguerite Dubois-Lafrance 23 April 1837 in Ste-Croix, dio. Québec.
 - 60 iv. François Martel. He married Angélique/Marie Tancret dit Tanqueraine 21 August 1791 in Ste-Croix, dio. Québec.
 - 61 v. Marie-Charlotte Martel. She married Antoine Croteau.
-

55. Paul⁶ Martel (Paul⁵, Paul⁴, Honoré³ Martel dit Lamontagne, Jean², Jean¹ Martel) was born 15 September 1738 in Ste-Croix, dio Québec. He married **(1) Angélique Baron** 14 February 1757 in Ste-Croix de Lotbinière, dio Québec, daughter of Jacques Baron and Genevieve Boucher. She was born in Ste-Croix, dio Québec. He married **(2) Angélique Denevers** 15 October 1764 in Ste-Croix, dio Québec, daughter of Jean-Baptiste Boisvert-Denevers and Angélique Boisvert-Denevers. She was born 02 August 1740 in Ste-Croix de Lotbinière, Québec, and died 12 December 1823 in Ste-Croix de Lotbinière, Québec.

Child of Paul Martel and Angélique Baron is:

- 62 i. Paul⁷ Martel, born 11 September 1759 in Québec.

Children of Paul Martel and Angélique Denevers are:

- 63 i. Antoine⁷ Martel, born after 1764. He married Marie-Anne Boisvert-Denevers 09 February 1785 in Ste-Croix de Lotbinière, dio Québec; born 10 October 1769 in Ste-Croix de Lotbinière, Québec.
 - + 64 ii. Modeste Martel, born after 1764.
-

Generation No. 7

57. Joseph⁷ Martel (Jacques⁶, Paul⁵, Paul⁴, Honoré³ Martel dit Lamontagne, Jean², Jean¹ Martel) He married **Françoise Langlois** 19 April 1779 in Ste-Croix, dio. Québec.

Children of Joseph Martel and Françoise Langlois are:

- + 65 i. Jacques⁸ Martel.

Genealogy of the Martel and Blouin Families of French Canada and New England

- 66 ii. Joseph Martel. He married Louise Coulombe 22 October 1805 in St-Antoine-Tilly, dio. Québec.
 - 67 iii. Marie-Françoise Martel, born 09 May 1784 in St-Antoine-Tilly, dio. Québec.
 - 68 iv. Françoise Martel, born 31 July 1785 in St-Antoine-Tilly, dio. Québec.
 - 69 v. Louis Martel, born 01 June 1787 in St-Antoine-Tilly, dio. Québec.
 - 70 vi. Frédéric Martel, born 07 March 1789 in St-Antoine-Tilly, dio. Québec.
 - 71 vii. David Martel, born 24 April 1790 in St-Antoine-Tilly, dio. Québec.
 - 72 viii. Antoine Martel, born 05 April 1794 in St-Antoine-Tilly, dio. Québec.
 - 73 ix. Marie-Louise Martel, born 04 August 1795 in St-Antoine-Tilly, dio. Québec.
-

64. Modeste⁷ Martel (Paul⁶, Paul⁵, Paul⁴, Honoré³ Martel dit Lamontagne, Jean², Jean¹ Martel) was born after 1764. He married **Therese Boisvert** 11 February 1817 in Lotbiniere, Québec.

Child of Modeste Martel and Therese Boisvert is:

- + 74 i. Therese⁸ Martel.
-

Generation No. 8

65. Jacques⁸ Martel (Joseph⁷, Jacques⁶, Paul⁵, Paul⁴, Honoré³ Martel dit Lamontagne, Jean², Jean¹ Martel) He married **Marguerite Garneau** 04 October 1808 in St-Antoine-Tilly, dio. Québec.

Children of Jacques Martel and Marguerite Garneau are:

- + 75 i. Godfroi⁹ Martel.
 - 76 ii. Léon Martel. He married (1) Julie Ferland 24 April 1838 in St-Antoine-Tilly, dio. Québec. He married (2) Philomène Paquet 08 January 1866 in Plessisville (St-Calixte-de-Somerset), dio. Québec.
 - 77 iii. Régis/François-Régis Martel. He married (1) Rose/Rosalie Grenier 27 April 1841 in St-Antoine-Tilly, dio. Québec. He married (2) Perpétue Grenier 20 May 1873 in Plessisville (St-Calixte-de-Somerset), dio. Québec.
 - 78 iv. Rémi Martel. He married Julie Demers 05 August 1851.
 - 79 v. François-Xavier Martel. He married (1) Marcelline Croteau 17 October 1843 in Québec (Cathedral Notre-Dame). He married (2) Eléonore Richard 27 November 1877 in St-Antoine-Tilly, dio. Québec.
-

74. Therese⁸ Martel (Modeste⁷, Paul⁶, Paul⁵, Paul⁴, Honoré³ Martel dit Lamontagne, Jean², Jean¹ Martel) She married **Isaie Hamel** 13 June 1836 in Ste-Croix de Lotbiniere, dio Québec. He was born after 1813.

Child of Therese Martel and Isaie Hamel is:

- + 80 i. Cleophas⁹ Hamel, born after 1836.
-

Genealogy of the Martel and Blouin Families of French Canada and New England

Generation No. 9

75. Godfroi⁹ Martel (Jacques⁸, Joseph⁷, Jacques⁶, Paul⁵, Paul⁴, Honoré³ Martel dit Lamontagne, Jean², Jean¹ Martel) He married **Emilie Fortier-Pouliot** 04 May 1840 in Saint-Antoine-De-Tilly, Lotbiniere, Québec, daughter of Jean Fortier and Elisabeth Bedard.

Children of Godfroi Martel and Emilie Fortier-Pouliot are:

- 81 i. Godefroy¹⁰ Martel. He married Euphrasie/Phrasilie Bilodeau 09 January 1866 in St-Ferdinand <d'Halifax>, dio. Québec.
 - 82 ii. Napoléon Martel. He married (1) Edwige Girard 16 February 1874 in Ste-Hélène-de-Chester, dio. Nicolet. He married (2) Philomène Sévigny 26 July 1878 in St-Ferdinand <d'Halifax>, dio. Québec.
 - 83 iii. Eléosa Martel, born about 1840. She married Edouard Bacquet-Lamontagne 17 July 1860 in St-Nicolas, dio. Québec.
 - 84 iv. Lazare Martel, born about 1842. He married Henriette Grégoire 29 January 1867 in St-Nicolas, dio. Québec.
 - 85 v. Gustave Martel, born about 1850. He married (1) Emélie Demers 28 November 1876 in St-Nicolas, dio. Québec. He married (2) Philomène Grégoire 10 October 1898 in St-Pierre-Baptiste, dio. Québec.
 - 86 vi. Anastasie Martel, born about 1855. She married David Fortier 04 October 1881 in St-Nicolas, dio. Québec.
 - + 87 vii. Isaïe Martel, born about June 1856 in Québec; died 22 August 1935 in Dover, New Hampshire.
-

80. Cleophas⁹ Hamel (Therese⁸ Martel, Modeste⁷, Paul⁶, Paul⁵, Paul⁴, Honoré³ Martel dit Lamontagne, Jean², Jean¹ Martel) was born after 1836. He married **Celarine Boisvert-Denevers** 27 July 1868 in Ste-Croix de Lotbiniere, dio Québec.

Child of Cleophas Hamel and Celarine Boisvert-Denevers is:

- + 88 i. Evelina¹⁰ Hamel, born after 1868.
-

Generation No. 10

Here begins genealogical data more familiarly known to the family at this time.

87. Isaïe¹⁰ Martel⁵ (Godfroi⁹, Jacques⁸, Joseph⁷, Jacques⁶, Paul⁵, Paul⁴, Honoré³ Martel dit Lamontagne, Jean², Jean¹ Martel) was born about June 1856 in Québec, and died 22 August 1935 in Dover, New Hampshire. He married (1) **Amanda Méthot** 09 November 1875 in St-Nicolas, Lévis, dio. Québec, daughter of Noël Méthot and Amanda Demers. She was born about 1854 in Québec. He married (2) **Philomène Beaulieu** 24 September 1889 in St-Anselme, Bellechasse Co., dio. Québec. She was born 07 April 1859, and died 10 April 1932 in Dover, New Hampshire.

⁵ Information about many of the descendants of Isaïe Martel and Philomène Beaulieu, other than those of Earle Spamer's direct lineage, was obtained in 2006 from a great-granddaughter, Sharon Martel Latture of Dover, New Hampshire.

Genealogy of the Martel and Blouin Families of French Canada and New England

Children of Isaïe Martel and Amanda Méthot are:

- 89 i. Oliva¹¹ Martel.
- + 90 ii. Joseph Isaïe Martel, born 26 November 1876 in Québec; died July 1962 in Mitchell Memorial Hospital, Brentwood, New Hampshire.
- + 91 iii. Exilia Martel, born 22 December 1877 in Ste-Hélène-de-Chester, dio. Nicolet, Québec.
- 92 iv. Amanda Martel, born 03 April 1879 in Ste-Hélène-de-Chester, dio. Nicolet, Québec. She married Placide Caouette 25 August 1903 in Québec (Cathedral Notre-Dame).
- 93 v. Emma Martel, born 07 April 1880 in Ste-Hélène-de-Chester, dio. Nicolet, Québec. She married Georges Huard 22 July 1912 in St-Etienne-de-Lauzon, dio. Québec.
- 94 vi. Délima Martel, born October 1881 in Québec. She married Odilon Fortier 24 July 1905 in St-Etienne-de-Lauzon, dio. Québec.
- 95 vii. Adélard Martel, born 06 May 1884 in Ste-Hélène-de-Chester, dio. Nicolet, Québec. He married Marie Roux 03 November 1931 in Dover (St. Charles), New Hampshire; born October 1892 in New Hampshire.
- + 96 viii. Leontine Martel, born August 1885 in Québec.

Children of Isaïe Martel and Philomène Beaulieu are:

- 97 i. Marianne¹¹ Martel, born November 1894 in New Hampshire. She married George Kremidas.
- + 98 ii. Wilfred Joseph Martel, born 22 September 1897 in Dover, New Hampshire; died May 1968 in Dover, New Hampshire.
- + 99 iii. Donat Arthur Martel, born 16 December 1899 in New Hampshire; died December 1975.

NOTES

87. Isaïe Martel (1856–1935)
and his wives Amanda Méthot (ca. 1854–) and Philomène Beaulieu (1859–1932)

Roland Chretien pronounced his great-grandfather's name, Isaïe, as like "E.C." ⁶

Another possible birth date for Isaïe Martel is about 1848 in Saint-Nicolas, Levis Co., Québec. His death notice gives his age as 79 years and 2 months. His Americanized name is given as Isiah, but thus far the only place this has been seen is in the death notice of his son, Joseph I. Martel [No. 90].

The 1881 Canadian census lists "Isai" Martel at the census place for Ste-Fortunat-de-Wolfestown, Richmond and Wolfe, Québec; his occupation is listed there as "forgeron" (blacksmith). The marriage certificate of Isaïe Martel and Amanda Méthot shows his signature as "Isai Martel", but a clerk has written it "Isaïe Martel".

According to family notes, Isaïe Martel had three sons and four daughters by Amanda Méthot (ca. 1854–) and two sons and one daughter by "Mrs. Beaulieu" [*sic*].

All that is understood at this time regarding the parentage of Amanda Méthot, daughter of Noël Méthot and Amanda Demers, is a direct lineage to her paternal and maternal grandparents, as follows:

Paternal lineage:

Noël Méthot married **Bacilice Paquet**. They had one son who is now known:

- i. Noël Méthot. He married Amanda Demers 15 July 1848 in St-Nicolas, Lévis, dio. Québec.

⁶ Roland Chretien, via telephone conversation with Earle Spamer, 2004.

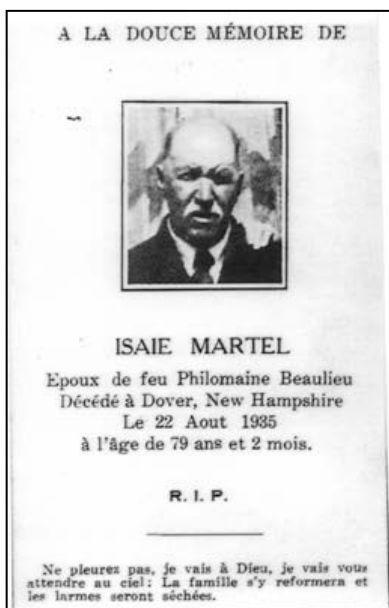


(Spamer 2911)

(Above) Standing (left to right): Philomène Martel, Isaïe Martel, Archie Turcotte, Yvonne Millier, Leontine Turcotte, Marie Anne Martel, Donat Martel, unidentified man. Children (left to right): Pauline Martel, Anita Martel, Raymond Martel, Wilfred Martel, Jr.

(Below, center) (seated): Isaïe Martel (left) and Frank Martel; (standing): Ferdinand Roberge (left) and Joseph Labrie.

(Below, left and right) Memorial cards for Isaïe Martel and his second wife, Philomène Beaulieu Martel.



(Spamer 2912)

Maternal lineage:

Abraham Demers married **Genevieve Carrier**. They had two children who are now known:

- i. Amanda Demers. She married Noël Méthot.
- ii. Pierre Demers.

Isaïe and Philomène (Beaulieu) Martel (1859–1932) emigrated from Canada to the U.S. in 1890.

The 1900 U.S. census registers this Martel family as “Martelle” and lists Isaïe Martel’s birthdate as June 1854. He is indexed in this census as “Isa Martelle”, but there are some census notations written over the name “Isaie” that probably led to the error.

At the time of the 1930 census, In 1930 census Isaïe and Philomene are residing with their son, Wilfred, in the same home as which they owned earlier.

Occupations of Isaïe Martel (from Canadian and U.S. censuses):

- 1881 Canadian census: Blacksmith
- 1900 U.S. census: Corder in cotton mill
- 1910 U.S. census: Laborer in cotton mill
- 1920, 1930 U.S. censuses: no occupations listed

Residences of Isaïe Martel (from U.S. censuses and other sources):

- 1900: New Market, Rockingham Co., New Hampshire
- 1910: 1 Young St., Dover, Strafford Co., New Hampshire
- ca. 1918, and 1920, 1930 censuses: 7 Roosevelt Ave., Dover, Strafford Co., New Hampshire

In the 1930 census, Isaïe and Philomène Martel reside in the household of son Wilfred Martel. Isaïe’s name is listed there as “Isaac”.

According to Isaïe Martel’s great-grandson, Roland Chretien [No. 143], Isaïe was a “master railroad boss”.⁷

Isaïe Martel is buried in St. Charles Cemetery, Dover, Strafford Co., New Hampshire.

The 1900 U.S. census lists the birthdate of Philomène (Beaulieu) Martel as February 1859.

Children of Isaïe Martel

In the 1900 U.S. census, the following children are residing with Isaïe and Philomene Martel: Emma, Delina, Adelard, Leontine, Marie, Maryanne, Wilfred, and Donat.

Oliva Martel [No. 89] hired himself out as a farmhand all his life; he never married. At one time he had boarded at the Baer Farm, in Rollinsford, New Hampshire.

At the time of the 1900 U.S. census, Emma Martel (1880–) [No. 93] and Délina Martel (1881–) [No. 94] worked in cotton mills.

⁷ Via telephone with Earle Spamer, 2004.

Genealogy of the Martel and Blouin Families of French Canada and New England

In the 1900 U.S. census, Adélard Martel (1884–) [No. 95] is listed as daughter, “Adelia”. In the 1900 and 1920 censuses he is working in cotton mills. At the time of the 1920 census he is residing at home with his parents and is single. The Maine State Archives records the death of one Adelard D. Martel, 19 November 1966, in Waterville, aged 76 years (born about 1890).

At the time of the 1910 and 1920 U.S. censuses, Marianne Martel (1894–) [No. 97] was working as a spinner in a cotton mill.

88. Evelina¹⁰ Hamel (Cleophas⁹, Therese⁸ Martel, Modeste⁷, Paul⁶, Paul⁵, Paul⁴, Honoré³ Martel dit Lamontagne, Jean², Jean¹ Martel) was born after 1868. She married **Firmin Desrochers** 14 August 1899 in Ste-Croix de Lotbiniere, dio Québec.

Child of Evelina Hamel and Firmin Desrochers is:

+ 100 i. Alice¹¹ Desrochers.

Generation No. 11

90. Joseph Isaïe¹¹ Martel (Isaïe¹⁰, Godfroi⁹, Jacques⁸, Joseph⁷, Jacques⁶, Paul⁵, Paul⁴, Honoré³ Martel dit Lamontagne, Jean², Jean¹ Martel) was born 26 November 1876 in Québec, and died July 1962 in Mitchell Memorial Hospital, Brentwood, New Hampshire. He married **Joséphine N. Arnold** 25 July 1898 in Dover (St. Charles dio.), New Hampshire, daughter of Pierre Arnold and Damathilde Joyal. She was born between March-April 1877 in Ste-Edwidge-de-Clifton, Mégantic Co., dio. Sherbrooke, Québec, and died March 1948 probably near Deerfield, New Hampshire.

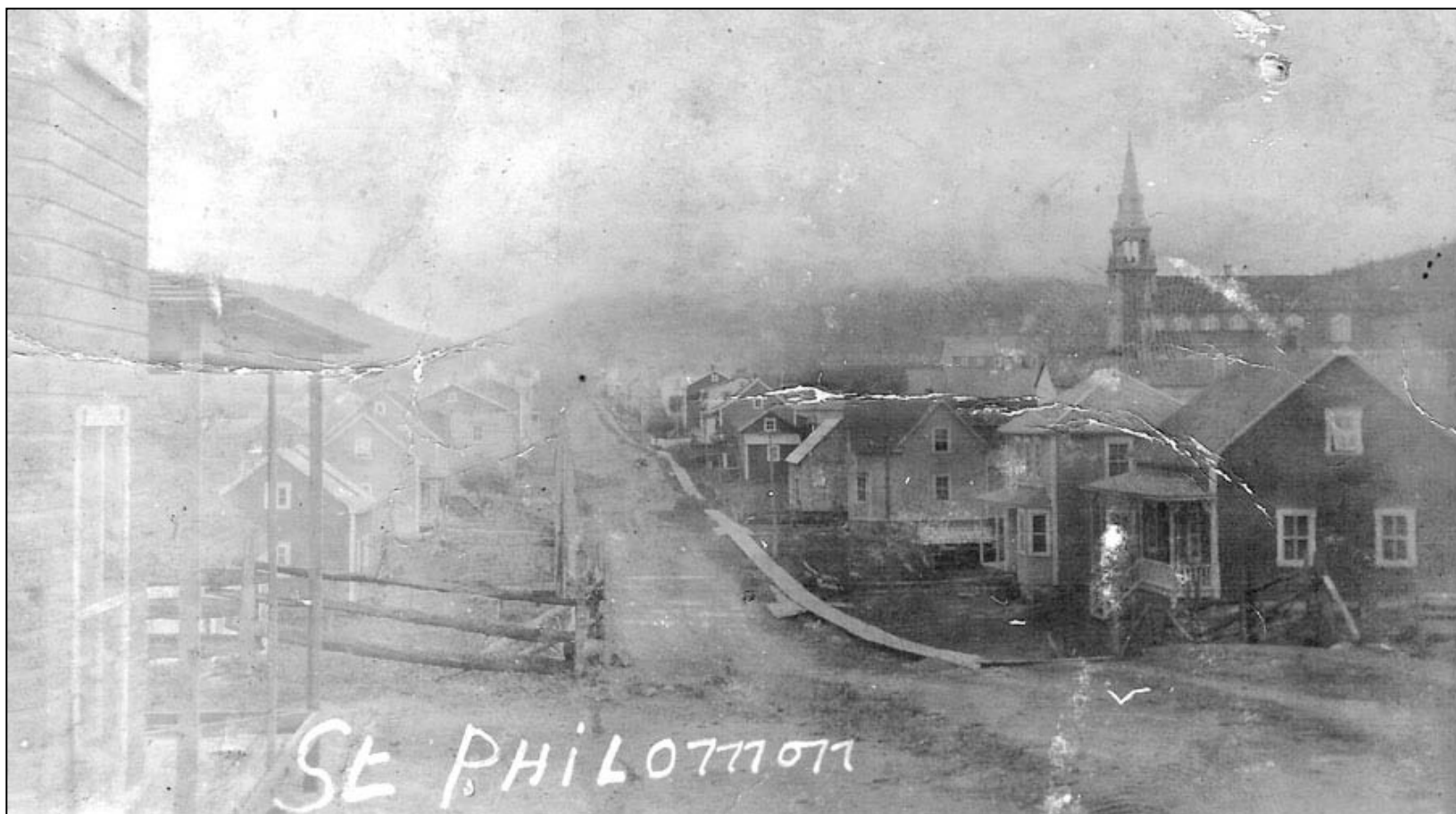
Children of Joseph Martel and Joséphine Arnold are:

- + 101 i. Palmina Marie¹² Martel, born 26 February 1901 in Dover, New Hampshire; died 07 February 1987 in a nursing home in Sewell, New Jersey.
- 102 ii. Lena Marie Martel, born 04 March 1902 in Dover, New Hampshire; died 22 January 1990 in St. John's Hospital, Lowell, Middlesex Co., Massachusetts. She married Eugene C. Boucher 1925 probably in Lowell, Middlesex Co., Massachusetts; born 01 August 1898 in Québec, Canada; died 05 November 1999 at Blairehouse of Tewksbury (hospice), Tewksbury, Massachusetts.
- + 103 iii. Odina Martel, born 10 July 1904; died 16 June 2000.
- + 104 iv. Laura Teresa Martel, born 14 December 1905 in Massachusetts; died 11 April 1993 in Hillsborough, Florida.
- + 105 v. Olia Martel, born 28 July 1908; died 22 December 2000 in Salem, Massachusetts.
- 106 vi. Dorila Martel, born 02 October 1909; died 10 January 1910.
- + 107 vii. Eva Beatrice Martel, born 04 April 1912 in Massachusetts; died 12 December 1994 in Lowell, Middlesex Co., Massachusetts.

NOTES

90. Joseph Isaïe Martel (1876–1962)

Joseph Isaïe Martel was baptized in Windsor Mills, St. Philippe parish, Richmond Co., Québec. He emigrated from Canada to the U.S. in 1894. He became a naturalized U.S. citizen in 1901.



(Spamer 1100)

St-Philémon, Bellechasse, Québec

This is the only contemporary view in family records that depicts one of the towns of Québec in which some of our Martel ancestors resided. This is presumably a commercially produced view, which was found in an album of photographs once held by Palmina Martel Kears (Earle Spamer's maternal grandmother).

Genealogy of the Martel and Blouin Families of French Canada and New England

A few fragments of information about Joseph Martel are known now. According to his grandson, Roland Chretien [No. 143], while still in Canada Joseph Martel and other family members ran a sawmill in the mountains near St. Julien, Québec. Chretien also mentioned that his “grandfather” ran Windsor Mills⁸, but it was not clear as to which of his grandfathers he referred. Joseph Martel’s mills were washed away in a flood and rebuilt. The Martels also had a store in Québec. Relatives lived in St-Philémon, Bellechasse.⁹

Occupations of Joseph Martel (from U.S. censuses and other sources):

1910: Box maker

1920: Box maker, Lamson Co. [Lowell, Massachusetts]

1942: Retired as foreman in the U.S. Mailing Case Co., Lowell, Massachusetts [from his death notice]

After 1942: Produce farmer [from his death notice]

Residences of Joseph Martel (from U.S. censuses and other sources):

1910: Lilley Ave., Lowell, Middlesex Co., Massachusetts

1920: Wollaston St., Lowell, Middlesex Co., Massachusetts

1942-ca. 1950: East St., Tewksbury, Middlesex Co., Massachusetts

ca. 1950-?: Deerfield, New Hampshire (with son, Odina)

At time of death: 189 South Rd., Deerfield, New Hampshire

[Also see Additions & Corrections](#)

The Social Security Death Index indicates that Joseph Martel was issued his Social Security card in New Jersey before 1951. He probably registered for Social Security during a trip to visit his daughter, Palmina, in Vineland, New Jersey; Earle Spamer holds photographs of Joseph and Josephine Martel while there.

The death notice for Joseph I. Martel notes that he was a former member of the Independent Order of Odd Fellows. [Also see Additions & Corrections](#)

Joséphine (Arnold) Martel (1877–1948)
(wife of Joseph I. Martel)

Her given names might be Josephine Marie. She emigrated from Canada to the U.S. in 1894 and became a naturalized U.S. citizen in 1901.

Her sister, Rosanna, married Joseph Labrie; their daughter, Pauline, married Wilfred Joseph Martel [No. 98]. See the Labrie Family collateral genealogy, following the entry for Wilfred Martel [No. 98]. Of the generation of Josephine and Rosanna, only their parents and siblings are known, as follows:

⁸ The locale of Windsor Mills was first known for its black-powder production; the first such plant in Quebec, established on the Watopeka River in 1864 by three American entrepreneurs. The powder plant operated until a violent explosion occurred there in 1922. The water sources attracted mills, including paper mills that continue in operation there today.

I am uncertain what Roland Chretien meant when he said that his grandfather “ran” Windsor Mills; probably that he had a mill there, but as to what kind that, too, is unknown now. (*Teste* Roland Chretien, via telephone conversation with Earle Spamer, 2004.)

⁹ All this information received by Earle Spamer via telephone conversation with Roland Chretien, 2004. The reference to St. Philemon was in response to Spamer’s inquiry regarding a commercially produced photograph of St. Philemon found in the collection of family photographs (Spamer Family Historical Photos, Group 41B, no. 1100).



(Spamer 1472)



(Spamer 1473)



(Spamer 1261)



(Spamer 1450)

**Joseph Martel (1876–1962) and
Josephine Arnold Martel (1877–1948)**

(Right) Josephine dressed for the beach; date
and location unknown.

(Left) At home in Tewksbury, Massachusetts,
August 1947.



(Spamer 1047)



(Spamer 1082)

The original family home of Joseph and Josephine Martel, in Tewksbury, Massachusetts, along East Street east of town past the railroad. (*Above*) During the time when the house was in use (date unknown, 1920s[?]), and (*below right*) after its abandonment (as seen during the 1950s[?]; person seen walking up the road is not identified). (*Below, left*) Joseph and Josephine; date unknown.



(Spamer 1089)



(Spamer 823) [Detail below]





(Left) Joseph Martel with his granddaughter, Jeannette Blouin, in 1921. Detail (*inset, below*) reveals his worn-out slippers held to his feet with twine.

(Spamer 315)





**The family of
Joseph and Josephine Martel**

(Left)
Front: Olia.
2nd row (left to right): Palmina, Odina, Laura,
 Lena.
Rear (left to right): Joseph, Eva, Josephine. Ca.
 1912.

(Spamer1470)



(Right) Studio photograph *(left to right):* Joseph,
 Josephine, Palmina, Lena, Odina, Laura, Olia, Eva.
 Photographed at Alexander Studio, 152 Paige St.,
 Lowell, Massachusetts. Ca. 1915.

(Spamer 3509)



(Spamer1480)

The Martels enjoy an outing to Lakeview Park, Dracut, Massachusetts.
(*Left to right*) Donat, Palmina, Josephine, Lena, Odina. (Donat was a brother of Joseph Martel.) Date unknown, ca. 1920.



(Spamer1601)

The Martel family, 1918. (*Seated, left to right*) Eva, Olia, Joseph, Josephine, Palmina, Laura.
Standing: Lena and Odina.



(Spamer 1080)

Martel women. *Left to right*: Unidentified woman, Josephine Martel, Lena Martel Boucher, Jeannette Blouin, Palmina Martel Blouin, Laura Martel Chretien, Olia Martel Myskowski, Eva Martel Wilkins, Agnes Deveau Martel (Mrs. Odina Martel). At the Martel family home, Tewksbury, Massachusetts. Date unknown, ca. 1934.



(Spamer 342)

Seated: Joseph and Josephine Martel. *Standing (left to right)*: Napoleon Chretien, Laura Martel Chretien, Edward L. Spamer, Lena Martel Boucher, Eugene Boucher. Probably in 1948, at either the Martel home or the Boucher home in Tewksbury, Massachusetts.

Pierre¹ Arnold was born about 1831 in Québec. He married **Damathilde Joyal**. She was born about 1831 in Québec.

Children of Pierre Arnold and Damathilde Joyal are:

- i. Charles² Arnold, born about 1862 in Québec.
- ii. Frederick Arnold, born about 1864 in Québec.
- iii. Dilima Arnold, born about 1866 in Québec.
- iv. Elmira Arnold, born about 1870 in Québec.
- v. Albert Arnold, born about 1872 in Québec.
- vi. Joséphine N. Arnold, born between March–April 1877 in Ste-Edwidge-de-Clifton, Mégantic Co., dio. Sherbrooke, Québec; died March 1948 probably near Deerfield, New Hampshire.
- vii. Rosanna Arnold, born 31 January 1880 in Prince Edward Island, Canada; died 07 February 1953 in Dover, New Hampshire.

Pierre Arnold was also known as Firmin Arnold. At the time of the 1881 Canadian census in Clifton West, Crompton, Québec, he was a farmer.

Joseph and Joséphine Martel are buried in Westlawn Cemetery, Lowell, Massachusetts (lot 102, section 5, near intersection of cemetery's F and Swan Aves.).

[Also see Additions & Corrections](#)

102. Lena (Martel) Boucher (1902–1990)

Occupations of Lena (Martel) Boucher (from U.S. censuses):

1920: Box maker in paper factory

1930: Seamstress

The Lowell Marriage Intentions list Eugene Boucher and Lena Martel on 10 October 1925; her given name is spelled there as “Lina”. Various other sources have spelled her given name as “Lina”. However, my mother was raised with the Martel families when her mother left the Lowell area, and I was always instructed to write to her aunt as “Aunt Lena”. Correspondence from Lena Boucher to my mother also was signed, “Lena”.

She is buried in Tewksbury Cemetery, Tewksbury, Middlesex Co., Massachusetts.

Eugene C. Boucher (1898–1999)
(husband of Lena Martel)

[Also see Additions & Corrections](#)

Eugene C. Boucher emigrated from Canada to the U.S. in 1919; the 1930 U.S. census indicates he immigrated in 1923, which may be in error.

Only sparse information is had regarding the parental family of Eugene C. Boucher, as follows:

The parents of Eugene C. Boucher were Napoleon Boucher (ca. 1871–) and Aurore Blie (ca. 1881–after 1956); both were born in Canada. They had only one other child who is known at this time: Edward P. Boucher (ca. 1918–), born in Canada.

Napoleon and Aurore Boucher, and their son, Edward, emigrated from Canada to the U.S. in 1923. At the time of the 1930 U.S. census, they resided at 72 Cedar St., Lynn, Essex Co., Massachusetts, in the same household with another family.



(Spamer 1467)

Lena Marie Martel (1902–1990) [No. 102]

Undated photo, ca. 1920.



(Left) Eugene and Lena Martel Boucher, wedding portrait, October 1925, at The Marion Studio, Lowell, Massachusetts.

(Below) Eugene and Lena Martel Boucher. This enigmatic view of Eugene depicts him in a U.S. Navy Chief Petty Officer's uniform, although he was not known to have served in the military. Location not known; date ca. 1925, before or after their marriage.

(Spamer 238)



(Spamer 1043)





(Spamer 1331)



(Spamer 1256)



(Spamer 730)

(Top left) Eugene Boucher and his sister-in-law, Palmina Martel Sylvester; at the Boucher farm, Tewksbury, Massachusetts, ca. 1939.

(Top right) Lena and Eugene Boucher with rustic folk art perhaps created by Eugene; at the Boucher farm, ca. 1939. Other family photos show similar pieces of folk art.



(Spamer 1143)

(Bottom left) Eugene and Lena Boucher, 1967; location not known. (Bottom right) Eugene and Lena on their farm, October 1978. Note in background the railroad crossing on East Street, east of Tewksbury center.



(Top) The Boucher home on East Street, east of Tewksbury, Massachusetts. East Street runs alongside the house just out of view to the right, and the railroad crossing is just out of view to the right. Note this is prior to the enlargement of the front of the house. Garage is to the left. Photo in 1951; woman on left is Lena Boucher.

(Spamer 346)



(Center) Approximately the same view that that shown above, in a photo taken in 2006. The railroad tracks run behind and parallel to the row of trees in background. The older line of trees was planted by Eugene Boucher to help shield the house from railroad noise and soot.

(Spamer photo)

(Right) The Boucher home, with enlargement on front, 1967. The enlargement was made sometime between 1951 and 1956.



(Spamer 729)



(Left) Outbuildings on the Boucher farm; Eugene stands in the garage area. The chicken house is the structure to the right.

(Center) Two views taken in 2006. At left is a view eastward along East Street, from about where the original Boucher driveway had been. The diagonal road traversing away from the photographer is a later construction.

(Spamer 348)



At right is a view southwestward toward about where the outbuildings had once stood. In both views, note the power lines crossing the property.



(Spamer photos)

(Right) Palmina Martel Sylvester, her mother, Josephine Martel, and Eugene Boucher. On the Boucher farm, ca. 1939.



(Spamer 1325)

Genealogy of the Martel and Blouin Families of French Canada and New England

Aurore (Blie) Boucher may have become a naturalized U.S. citizen in December 1938.¹⁰

Edward P. Boucher may be the same Edward P. Boucher who is listed in the Massachusetts Death Index (who is listed as having been born in Canada on 29 October 1917; died 6 January 1996 in Rockland, Plymouth Co., Massachusetts). [Also see Additions & Corrections](#)

Occupations of Eugene C. Boucher (from U.S. censuses and personal information):

ca. 1925: A photograph of him taken about 1925, but certainly after his marriage (he wears a wedding ring), shows him in a naval uniform, apparently with a Petty Officer's insignia. There is no family recollection of him having served in the Navy. His death certificate (1999) indicates under "Military Service", "None Reported". (It is possible that the photograph was taken for another reason; for example, as dressed for an acting part in a play.)

1930 U.S. census: "anything"

Most of his working career he was a chicken farmer

Residences of Eugene C. Boucher (from U.S. censuses and other sources):

1920: 24 Cabot St., Lowell, Middlesex Co., Massachusetts (he is one of seven roomers in the household of "Alphonse Thibault")

ca. 1925-1999: 893 East St., Tewksbury, Massachusetts

Eugene C. Boucher lived to age 101. There were no children from his marriage to Lena Martel. He was buried 8 November 1999 in Tewksbury Cemetery, Tewksbury, Middlesex Co., Massachusetts.

The Bouchers had a farm northeast of Tewksbury on East St., at the intersection of the (former) Boston & Maine Railroad track. The farm was inside the eastern, acute angle of the intersection. In addition to some crops, Eugene Boucher's principal business was chicken raising. The farm no longer exists and has been subdivided by development. At the rail crossing today (2006), a gasoline station and liquor store occupy the site of the Boucher residence; a truck dealer occupies the former farm area where the barns had stood, between the road and the railroad track. The electrical high-tension line that crossed the property in the early 1950s is still present, supplemented also by a larger, more modern line. Also still present is a line of trees that Boucher had planted along the railroad track, to help shield the house from some of the noise and soot; these trees are behind the present gas station and liquor store.

91. Exilia¹¹ Martel (Isaïe¹⁰, Godfroi⁹, Jacques⁸, Joseph⁷, Jacques⁶, Paul⁵, Paul⁴, Honoré³ Martel dit Lamontagne, Jean², Jean¹ Martel) was born 22 December 1877 in Ste-Hélène-de-Chester, dio. Nicolet, Québec. She married **Ferdinand Roberge** 13 August 1900 in Dover (St. Charles), New Hampshire.

Children of Exilia Martel and Ferdinand Roberge are:

- | | | |
|-----|------|---|
| 108 | i. | Emile ¹² Roberge, born about 1905 in New Hampshire. He married Rose? |
| 109 | ii. | Alice Roberge, born about 1908 in New Hampshire. She married Alcide Turgeon. |
| 110 | iii. | Lena Roberge, born about 1911 in New Hampshire. She married Harvey Grenier. |
| 111 | iv. | Yvonne Roberge, born about 1912 in New Hampshire. She married Alfred Richard. |
| 112 | v. | Blanche Roberge, born about 1914 in New Hampshire. |
| 113 | vi. | Lillian Roberge, born about 1916 in New Hampshire. |

¹⁰ "307 Seek to Be Citizens. Local Session of Naturalization Court Breaks All Records." *The Lowell Sun*, 22 Dec 1938. Aurore Boucher is listed amongst the applicants, although it is not certain that her application was accepted.

Genealogy of the Martel and Blouin Families of French Canada and New England

- + 114 vii. Jeanette Roberge, born 13 July 1916 in Dover, New Hampshire; died 11 January 2004 in Riverside Rest Home, Dover, New Hampshire.
- 115 viii. Roland Roberge, born about 1919 in New Hampshire; died 26 October 2005 in Portsmouth, New Hampshire. He married Lillian M. Labranche.
- 116 ix. Armande Roberge. She married Daniel Richard.
- 117 x. William Roberge. He married Alice Turgeon.

NOTES

At the time of the 1930 U.S. census, the following occupations are listed for members of the Martel household residing at the corner of Essex and Forests Sts., Dover, New Hampshire:

Exilia (Martel) Roberge (1877–) [No. 91]: Picker in a cotton mill

Emile Roberge (ca. 1905–) [No. 108]: Machinist in a foundry

Alice Roberge (ca. 1908–) [No. 109]: Bookkeeper for a grocery store

Lena Roberge (ca. 1911–) [No. 110]: Stitcher in a shoe shop

Yvonne Roberge (ca. 1912–) [No. 111] never married.

Daniel Richard, husband of Armande Roberge [No. 116] founded a local business, Richard Oil.

96. Leontine¹¹ Martel (Isaïe¹⁰, Godfroi⁹, Jacques⁸, Joseph⁷, Jacques⁶, Paul⁵, Paul⁴, Honoré³ Martel dit Lamontagne, Jean², Jean¹ Martel) was born August 1885 in Québec. She married (1) **Millier**. She married (2) **Archille Turcotte** about 1926. He was born about 1897 in New Hampshire.

Child of Leontine Martel and Millier is:

- 118 i. Yvonne¹² Millier, born about 1915 in New Hampshire.

NOTES

96. Leontine (Martel) Millier Turcotte (1885–)

In the 1910 U.S. census, Leontine Martel is listed as “Son”; in the 1920 census as “son [in] law”. In both of these censuses she is residing with her parents; in 1920 her daughter, Yvonne, also resides with her.

Occupations of Leontine Martel Millier (from U.S. censuses):

1900: Working in cotton mill

1910, 1930: Spinner in cotton mill

Leontine Martel Millier is buried in St. Charles Cemetery, Dover, New Hampshire.

Archille Turcotte (ca. 1897–)
(husband of Leontine Martel)

At the time of the 1930 U.S. census, Archille Turcotte was a roping boy in a cotton mill, residing at 67 Cocheco St., Dover, New Hampshire.

118. *Yvonne Millier* (ca. 1915–)

In the 1920 U.S. census, Yvonne Millier is listed as “Evon”. She is buried in St. Charles Cemetery, Dover, New Hampshire.

98. Wilfred Joseph¹¹ Martel (Isaïe¹⁰, Godfroi⁹, Jacques⁸, Joseph⁷, Jacques⁶, Paul⁵, Paul⁴, Honoré³ Martel dit Lamontagne, Jean², Jean¹ Martel) was born 22 September 1897 in Dover, New Hampshire, and died May 1968 in Dover, New Hampshire. He married **Pauline L. Labrie** 1921, daughter of Joseph Labrie and Rosanna Arnold. She was born 04 February 1900 in Fall River, Massachusetts, and died June 1978 in 69 Glenwood Ave., Dover, New Hampshire. [Also see Additions & Corrections](#)

Children of Wilfred Martel and Pauline Labrie are:

- + 119 i. Wilfred Joseph¹² Martel, Jr., born 01 November 1922 in Dover, New Hampshire; died 22 September 1993 in Somersworth, New Hampshire.
- + 120 ii. Raymond Joseph Martel, born 01 June 1924 in Dover, New Hampshire.
- 121 iii. Paul E. Martel, born 17 June 1925 in Dover, New Hampshire; died March 1926 in Dover, New Hampshire.
- + 122 iv. Pauline Theresa Martel, born 06 October 1926 in Dover, New Hampshire.
- + 123 v. Paul John Martel, born 10 April 1928 in Dover, New Hampshire.
- 124 vi. Theresa Jeanne Martel, born 05 November 1929 in Dover, New Hampshire. She married Gerald Bernard Hartford 04 September 1969; born 02 April 1941.
- + 125 vii. Rita Jeanne Martel, born 14 September 1931 in Dover, New Hampshire.
- + 126 viii. Robert Joseph Martel, born 13 December 1932 in Dover, New Hampshire.
- + 127 ix. Emile Joseph Martel, born 05 March 1935 in Dover, New Hampshire.
- + 128 x. Richard Francis Martel, born 02 November 1938 in Dover, New Hampshire.
- + 129 xi. Bertrand Joseph Martel, born 12 October 1942 in Dover, New Hampshire.

NOTES

98. *Wilfred Joseph Martel* (1897–1968)

In the 1900 U.S. census, Wilfred Joseph Martel’s birthdate is listed as October 1896. In the 1920 census, he is listed as “Alfred” Martel.

Occupations of Wilfred Joseph Martel (from U.S. censuses and other sources):

1917 (WWI draft registration): Grocery clerk for Raoul Roux, 27 Main St., Dover, New Hampshire
1920 census: Grocery store salesman
1930 census: Bakery truck driver

Residences of Wilfred Joseph Martel (from U.S. censuses and other sources):

1917 (WWI draft registration), and 1920, 1930 censuses: 7 Roosevelt Ave., Dover, New Hampshire

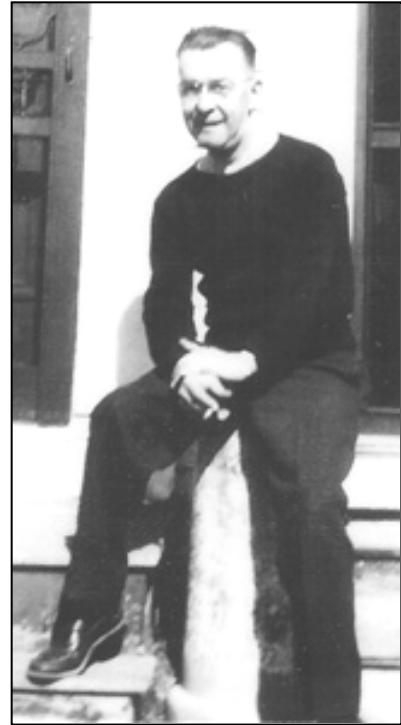
[Also see Additions & Corrections](#)



(Spamer 1040)



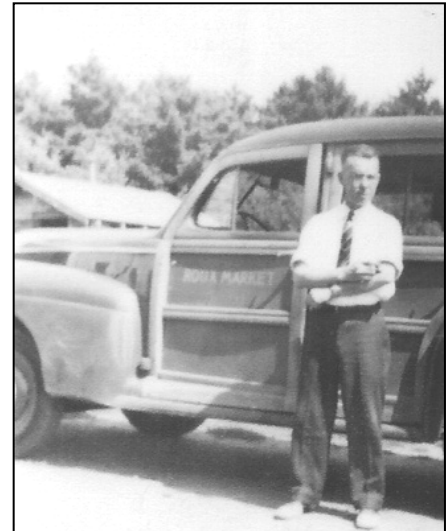
(Spamer 2913)



(Spamer 2916)



(Spamer 2922)



(Spamer 2923)

Wilfred Joseph Martel, Sr. (1897–1968) [No. 98] and his wife, Pauline L. Labrie (1900–1978).

(Top, left and center) Wilfred and Pauline; two photos, dates not known. (Top right) Wilfred outside his home on Glenwood Ave., Dover, New Hampshire.

(Center, left and right) Wilfred Martel's "Sonny Boy Bread" delivery truck, and Wilfred standing next to the Roux Market truck in Dover, New Hampshire. Dates not known.

(Bottom) Wilfred and Pauline at their kitchen table.



(Spamer 2921)



(Spamer 2926)

Six of the ten surviving children of Wilfred and Pauline Martel. *Left to right:* **Rita Jeanne Martel** (1931–) [No. 125], **Raymond Joseph Martel** (1924–) [No. 120], **Theresa Jeanne Martel** (1929–) [No. 124], **Robert Joseph Martel** (1932–) [No. 126], **Pauline Theresa Martel** (1926–) [No.122], and **Paul John Martel** (1928–) [No. 123]. Location and date no known.

Genealogy of the Martel and Blouin Families of French Canada and New England

Wilfred Joseph Martel and Pauline Labrie Martel are buried in St. Charles Cemetery, Dover, New Hampshire.

Pauline (Labrie) Martel (1900–1978)
(wife of Wilfred Joseph Martel)

At the time of the 1920 U.S. census, Pauline Labrie Martel was a spinner in a cotton mill.

Also see the Labrie Family collateral genealogy, below.

124. Theresa (Martel) Hartford (1929–)

Theresa Martel Hartford had no children.

Martel Family genealogy continues after the following collateral genealogy

Labrie Family Collateral Genealogy (173 descendants)

The genealogy of the Labrie family, as it relates to our Martel lineage and as currently understood, is as follows:

Descendants of Olivier Mignealt Labrie

Generation No. 1

1. Olivier Mignealt⁷ Labrie (Alexandre⁶, Joseph Marie⁵, Joseph⁴, Michel Migneault³, Jean Baptist Mignot², Louis¹) He married **(1) Appoline Ouelett**. He married **(2) Euphrosine Gendron**.

Children of Olivier Labrie and Appoline Ouelett are:

- + 2 i. François⁸ Labrie, born 18 October 1854 in Matane, Québec.
- 3 ii. Marie Labrie. She married Olivier Chasse.
- 4 iii. Edouard Labrie. He married Aurelie Villeneuve.
- 5 iv. Philomene Labrie. She married (1) Benoni Gauthier. She married (2) Goderrick McMullen.
- 6 v. Alexandre Labrie.
- 7 vi. Celina Labrie. She married Alfred Dube.
- 8 vii. Appoline Labrie.

Children of Olivier Labrie and Euphrosine Gendron are:

- 9 i. Ursule⁸ Labrie.
- 10 ii. Emile Labrie. He married Elizabeth Martel.

Generation No. 2

2. François⁸ Labrie (Olivier Mignealt⁷, Alexandre⁶, Joseph Marie⁵, Joseph⁴, Michel Migneault³, Jean Baptist Mignot², Louis¹) was born 18 October 1854 in Matane, Québec. He married **Cedulie Gauthier** 02 May 1876, daughter of Gregorie Gauthier and Felicite Gagnon. She was born 1850 in Matane, Québec, and died 1925.

Genealogy of the Martel and Blouin Families of French Canada and New England

Children of François Labrie and Cédulie Gauthier are:

- + 11 i. Joseph François Elzear⁹ Labrie, born 09 March 1877 in St. Jerome, Matane, Québec; died 02 May 1932 in Dover, New Hampshire.
- + 12 ii. Pauline Labrie.

NOTES

At the time of the 1920 U.S. census, Cédulie (Gauthier) Labrie (1850–), wife of François Labrie, resided with her son, Joseph, on Essex St., Dover, New Hampshire. She is buried in St. Charles Cemetery, Dover, New Hampshire.

Generation No. 3

11. Joseph François Elzear⁹ Labrie (François⁸, Olivier Migneault⁷, Alexandre⁶, Joseph Marie⁵, Joseph⁴, Michel Migneault³, Jean Baptist Mignot², Louis¹) was born 09 March 1877 in St. Jerome, Matane, Québec, and died 02 May 1932 in Dover, New Hampshire. He married **Rosanna Arnold** 01 April 1899 in St. Jerome, Matane, Québec, daughter of Pierre Arnold and Damathilde Joyal. She was born 31 January 1880 in Prince Edward Island, Canada, and died 07 February 1953 in Dover, New Hampshire.

Children of Joseph Labrie and Rosanna Arnold are:

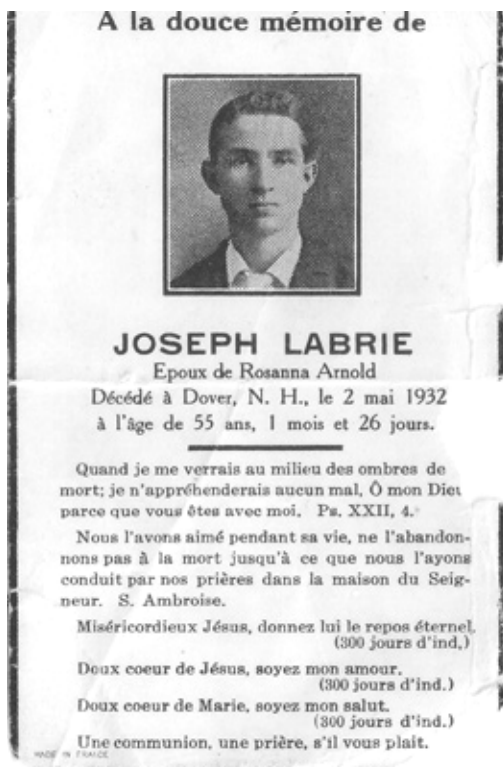
- + 13 i. Pauline L.¹⁰ Labrie, born 04 February 1900 in Fall River, Massachusetts; died June 1978 in 69 Glenwood Ave., Dover, New Hampshire.
- 14 ii. Albert Labrie, born 20 July 1901 in New Hampshire; died 02 January 1971 in Dover, New Hampshire.
- + 15 iii. Joseph Labrie, born 02 February 1904 in New Hampshire; died 12 February 1976 in Manchester, New Hampshire.
- 16 iv. Antonio Labrie, born 1905; died 1908.
- + 17 v. Pierre Labrie, born 05 August 1907 in New Hampshire; died 18 September 1985 in Dover, New Hampshire.
- 18 vi. Rose Labrie, born 1909 in New Hampshire.
- + 19 vii. Robert Labrie, born 12 March 1911 in New Hampshire; died 02 September 1975 in Dover, New Hampshire.
- 20 viii. Antoinette Labrie, born 1913 in New Hampshire; died 1918.
- 21 ix. Jeanne Labrie, born 24 May 1915 in New Hampshire; died 15 August 1990.
- + 22 x. Madeleine B. Labrie, born 26 June 1916 in New Hampshire; died 16 February 1986 in Eliot, Maine.
- + 23 xi. Louise M. Labrie, born 24 November 1917 in New Hampshire; died 01 February 1998.
- + 24 xii. Antoinette Labrie, born 12 December 1919 in New Hampshire; died 31 December 1998.
- 25 xiii. Maurice J. Labrie, born 06 December 1920 in New Hampshire; died 06 June 1944 in Normandy, France.
- + 26 xiv. Raymond R. Labrie, born 09 June 1922 in New Hampshire; died 12 August 1994 in Dover, New Hampshire.
- + 27 xv. William J. Labrie, born 04 March 1924 in New Hampshire; died 12 November 1992.
- + 28 xvi. Paul Joseph Labrie, born 22 July 1925 in New Hampshire; died 03 February 1989.

NOTES

11. Joseph François Elzear Labrie (1877–1932)

He emigrated from Quebec to the U.S. in 1891. At the time of the 1930 U.S. census, he was a plumber, residing at 12 Essex St., Dover, New Hampshire. He founded the firm of Joseph Labrie and Sons, Plumbing and Heating.

He is buried in St. Charles Cemetery, Dover, New Hampshire.



(Spamer 2919)

(Left) Memorial card to **Joseph François Elzear Labrie** (1877–1932) [Labrie Family collateral genealogy, No. 11].



(Spamer 2924)

(Right) First children of Joseph and Rosanna Labrie, **Pauline** (1900–1978) [No. 13] and **Albert** (1901–1971) [No. 14]. Studio portrait, location and date not known.

(Below) Daughters of Joseph and Rosanna Labrie (left to right): **Jeanne** (1915–1990) [No. 21], **Pauline** (1900–1978) [No. 13], **Rose** (1909–) [No. 18], **Antoinette** (1919–1998) [No. 24], **Madeleine** (1916–1986) [No. 22], and **Louise** (1917–1998) [No. 23]. Location and date not known.



(Spamer 2925)

Genealogy of the Martel and Blouin Families of French Canada and New England

Rosanna (Arnold) Labrie (1880–1953)
(wife of Joseph Labrie)
“Rose”

She emigrated from Quebec to the U.S. in 1892. At the time of the death of her son, Maurice, she resided at 12 Essex St., Dover, New Hampshire.

She is buried in St. Charles Cemetery, Dover, New Hampshire.

Her sister, Josephine, married Joseph Martel [No. 90 in the main Martel family genealogy]. Of the generation of Rosanna and Josephine, only their parents and siblings are known, as follows:

Pierre¹ Arnold was born about 1831 in Québec. He married **Damathilde Joyal**. She was born about 1831 in Québec.

Children of Pierre Arnold and Damathilde Joyal are:

- i. Charles² Arnold, born about 1862 in Québec.
- ii. Frederick Arnold, born about 1864 in Québec.
- iii. Dilima Arnold, born about 1866 in Québec.
- iv. Elmira Arnold, born about 1870 in Québec.
- v. Albert Arnold, born about 1872 in Québec.
- vi. Joséphine N. Arnold, born between March-April 1877 in Ste-Edwidge-de-Clifton, Mégantic Co., dio. Sherbrooke, Québec; died March 1948 probably near Deerfield, New Hampshire.
- vii. Rosanna Arnold, born 31 January 1880 in Prince Edward Island, Canada; died 07 February 1953 in Dover, New Hampshire.

Pierre Arnold (ca. 1831–) was also known as Firmin Arnold. At the time of the 1881 Canadian census in Clifton West, Crompton, Québec, he was a farmer.

14. Albert Labrie (1901–1971)

At the time of the 1920 U.S. census he was a ship hand in a shipyard.

During World War II he served in the U.S. Army, TEC4 593rd Signal AW Battalion.

18. Rose Labrie (1909–)

At the time of the 1930 U.S. census she was a presser at the American Dye Works.

25. Maurice J. Labrie (1920–1944)

He was in the U.S. Naval Reserve, Motor Machinist's Mate 3rd Class (Service No. 7053212).

Maurice Labrie was killed in action during the Allied invasion of France on D-Day, 6 June 1944. He is buried in the Normandy American Cemetery, St. Laurent-sur-Mer, Colleville-sur-Mer, Normandie, France (Plot I, Row 24, Grave 14).¹¹

¹¹ The Normandy American Cemetery is situated on a cliff overlooking Omaha Beach and the English Channel just east of St-Laurent-sur-Mer and northwest of Bayeux in Colleville-sur-Mer. It is administered by the American Battle Monuments Commission. Nearby, on D + 1 (7 June 1944), the first temporary American World War II cemetery in France was established by the American Graves Registration Service. After the war, when the temporary cemeteries were disestablished by the Army, the remains of the American military Dead whose next-of-kin requested permanent interment overseas were moved to a permanent cemetery site; usually it was the one that was closest to the temporary cemetery. (>>“Normandy American Cemetery and Memorial” informational document, available through American Battle Monuments Commission website, <http://www.abmc.gov/cemeteries/cemeteries/no.php>;

[note cont'd →



(Spamer 2920)

Maurice J. Labrie (1920–1944) [Labrie Family, No. 25], with his mother, **Rosanna Arnold Labrie** (1880–1953), presumably at home in Dover, New Hampshire. Maurice, Motor Machinist's Mate 3rd Class, U.S. Navy, was killed in action on D-Day, 6 June 1944, during the Allied invasion of France. He is buried in the Normandy American Cemetery, St. Laurent-sur-Mer, Colleville-sur-Mer, Normandie, France (Plot I, Row 24, Grave 14). The photo hanging on the wall behind the subjects shows Rev. Charles E. Burke, parish priest of St. Charles Church, Dover, New Hampshire. *(Photo from Sharon Martel Latture)*

12. Pauline⁹ Labrie (François⁸, Olivier Mignealt⁷, Alexandre⁶, Joseph Marie⁵, Joseph⁴, Michel Migneault³, Jean Baptist Mignot², Louis¹) She married **Fortier**.

Child of Pauline Labrie and Fortier is:

- 29 i. Pauline¹⁰ Fortier.

NOTES

Pauline (Labrie) Fortier [No. 12] and Pauline Fortier [No. 29] are buried in Dover, New Hampshire.

Generation No. 4

13. Pauline L.¹⁰ Labrie (Joseph François Elzear⁹, François⁸, Olivier Mignealt⁷, Alexandre⁶, Joseph Marie⁵, Joseph⁴, Michel Migneault³, Jean Baptist Mignot², Louis¹) was born 04 February 1900 in Fall River, Massachusetts, and died June 1978 in 69 Glenwood Ave., Dover, New Hampshire. She married **Wilfred Joseph Martel** 1921, son of Isaïe Martel and Philomène Beaulieu. He was born 22 September 1897 in Dover, New Hampshire, and died May 1968 in Dover, New Hampshire.

See the main Martel genealogy for information relating to the children and descendants of Pauline and Wilfred Martel [No. 98 in the Martel genealogy]. Their descendants are omitted from the remainder of this Labrie family collateral genealogy.

15. Joseph¹⁰ Labrie (Joseph François Elzear⁹, François⁸, Olivier Mignealt⁷, Alexandre⁶, Joseph Marie⁵, Joseph⁴, Michel Migneault³, Jean Baptist Mignot², Louis¹) was born 02 February 1904 in New Hampshire, and died 12 February 1976 in Manchester, New Hampshire. He married **Jeanne Roy**.

Children of Joseph Labrie and Jeanne Roy are:

- 41 i. Velma¹¹ Labrie. She married Carroll.
42 ii. Richard Labrie.

NOTES

Joseph Labrie (1904–1976) [No. 15] was a barber.

17. Pierre¹⁰ Labrie (Joseph François Elzear⁹, François⁸, Olivier Mignealt⁷, Alexandre⁶, Joseph Marie⁵, Joseph⁴, Michel Migneault³, Jean Baptist Mignot², Louis¹) was born 05 August 1907 in New Hampshire, and died 18 September 1985 in Dover, New Hampshire. He married **Lillian Gregoire**. She was born 1911, and died about 1977 in Dover, New Hampshire.

Children of Pierre Labrie and Lillian Gregoire are:

- 43 i. Norman¹¹ Labrie. He married Priscilla.
44 ii. Richard Labrie.
+ 45 iii. Leonard Labrie, born 19 May 1943; died 21 July 1992.
46 iv. Roland Labrie.
47 v. Rita Labrie, born 1947. She married (1) Beaudette. She married (2) Green.

accessed 21 Mar 2006. Ancestry.com. *World War II Navy, Marine Corps, and Coast Guard Casualties, 1941-1945* [database on-line]. Provo, UT, USA: The Generations Network, Inc., 2007. Original data: State Summary of War Casualties from World War II for Navy, Marine Corps, and Coast Guard Personnel [Archival Research Catalog]; Records of the Bureau of Naval Personnel, Record Group 24; National Archives at College Park, College Park, MD.)

NOTES

At the time of the 1930 U.S. census Pierre Labrie (Peter Labrie) (1907–1985) [No. 17] was a plumber.

In the 1958 Dover, New Hampshire, directory Lillian (Gregoire) Labrie (1911–ca. 1977), wife of Pierre Labrie, is listed as working for W-L, Inc.

Norman Labrie [No. 43] and Richard Labrie [No. 44] are twins.

Priscilla Labrie, wife of Norman Labrie [No. 43], had a twin sister, Arlene.

Roland Labrie [No. 46] was last known to be living in Cape Neddick or Eliot, Maine.

Rita (Labrie) Green (1947–) [No. 47] was last known to be living in Long Beach, California.

19. Robert¹⁰ Labrie (Joseph François Elzear⁹, François⁸, Olivier Mignealt⁷, Alexandre⁶, Joseph Marie⁵, Joseph⁴, Michel Migneault³, Jean Baptist Mignot², Louis¹) was born 12 March 1911 in New Hampshire, and died 02 September 1975 in Dover, New Hampshire. He married **Loretta Keatting**. She was born 11 May 1912 in Dover, New Hampshire, and died about 2005.

Children of Robert Labrie and Loretta Keatting are:

- + 48 i. Constance¹¹ Labrie, born 20 August 1935.
- + 49 ii. Robert F. Labrie, born 23 April 1939.
- + 50 iii. Gloria Labrie, born 24 April 1940.
- + 51 iv. Diane Labrie, born 20 June 1949.

NOTES

At the time of the 1930 U.S. census, Robert Labrie (1911–1975) [No. 19] was listed as a laborer and plumber.

22. Madeleine B.¹⁰ Labrie (Joseph François Elzear⁹, François⁸, Olivier Mignealt⁷, Alexandre⁶, Joseph Marie⁵, Joseph⁴, Michel Migneault³, Jean Baptist Mignot², Louis¹) was born 26 June 1916 in New Hampshire, and died 16 February 1986 in Eliot, Maine. She married **Raoul Roux**. He was born 31 August 1904, and died 05 November 1969 in Dover, New Hampshire.

Children of Madeleine Labrie and Raoul Roux are:

- + 52 i. Lucille¹¹ Roux.
- 53 ii. Estelle Roux. She married S.R.S. de Pastor; of Spain.
- 54 iii. Stephen Roux.

NOTES

Raoul Roux (1904–1969), husband of Madeleine Labrie [No. 22], was a grocer. He is buried in Dover, New Hampshire.

Estelle (Roux) de Pastor [No. 53] was last known to be living in Spain.

Stephen Roux [No. 54] was last known to be living in Eliot, Maine.

23. Louise M.¹⁰ Labrie (Joseph François Elzear⁹, François⁸, Olivier Mignealt⁷, Alexandre⁶, Joseph Marie⁵, Joseph⁴, Michel Migneault³, Jean Baptist Mignot², Louis¹) was born 24 November 1917 in New Hampshire, and died 01 February 1998. She married **Raymond Godbois** 24 November 1945.

Children of Louise Labrie and Raymond Godbois are:

- 55 i. Helen¹¹ Godbois, born 09 October 1946 in New Hampshire. She married Edward Baxter.
- + 56 ii. Paulette Rose Godbois, born 30 May 1948 in Dover, New Hampshire.

Genealogy of the Martel and Blouin Families of French Canada and New England

- + 57 iii. Sandra Jean Godbois, born 04 May 1950 in Dover, New Hampshire.
- + 58 iv. Judy Anne Godbois, born 06 October 1954 in Dover, New Hampshire.
- 59 v. Jane Marie Godbois, born 27 July 1960 in Hartford, Connecticut.

NOTES

In the 1920 U.S. census, Louise M. Labrie (1917–1998) [No. 23] is listed as a son, Louis. In the 1935 Dover, New Hampshire, directory she is listed as employed by PM (?). She was last known to be living in Joshua, Texas.

Jane Marie Godbois (1960–) [No. 59] was last known to be living in Dingman, Pennsylvania.

24. Antoinette¹⁰ Labrie (Joseph François Elzear⁹, François⁸, Olivier Mignealt⁷, Alexandre⁶, Joseph Marie⁵, Joseph⁴, Michel Migneault³, Jean Baptist Mignot², Louis¹) was born 12 December 1919 in New Hampshire, and died 31 December 1998. She married **Henry Paquette**.

Child of Antoinette Labrie and Henry Paquette is:

- + 60 i. Henry¹¹ Paquette II.

NOTES

In the 1941 Dover, New Hampshire, directory, Antoinette Labrie (1919–1998) [No. 24] is listed as employed by Joseph Labrie and Sons (plumbing and heating).

26. Raymond R.¹⁰ Labrie (Joseph François Elzear⁹, François⁸, Olivier Mignealt⁷, Alexandre⁶, Joseph Marie⁵, Joseph⁴, Michel Migneault³, Jean Baptist Mignot², Louis¹) was born 09 June 1922 in New Hampshire, and died 12 August 1994 in Dover, New Hampshire. He married **Thelma Mansfield**.

Children of Raymond Labrie and Thelma Mansfield are:

- 61 i. Anita¹¹ Labrie.
- 62 ii. Beverly Labrie. She married Parmalee.
- 63 iii. Christine Labrie.
- 64 iv. Cindy Labrie.
- 65 v. David Labrie.
- 66 vi. Donna Labrie. She married Wilder.
- 67 vii. Gene Labrie.
- 68 viii. Jennifer Labrie.
- 69 ix. Marc Labrie.
- 70 x. Michelle Labrie.
- 71 xi. Paula Labrie.
- 72 xii. Raymond Labrie.
- 73 xiii. Theresa Labrie. She married Lunt.
- 74 xiv. Kenneth Labrie, born 1957; died 1991.

NOTES

Raymond R. Labrie (1922–1994) [No. 26] is buried in Dover, New Hampshire.

Theresa (Labrie) Lunt [No. 73] was last known to be living in Somersworth, New Hampshire.

27. William J.¹⁰ Labrie (Joseph François Elzear⁹, François⁸, Olivier Mignealt⁷, Alexandre⁶, Joseph Marie⁵, Joseph⁴, Michel Migneault³, Jean Baptist Mignot², Louis¹) was born 04 March 1924 in New Hampshire, and died 12 November 1992. He married **(1) Emma**. He married **(2) Edyth**.

Genealogy of the Martel and Blouin Families of French Canada and New England

Child of William Labrie and Emma is:

- 75 i. Robert¹¹ Labrie.

Children of William Labrie and Edyth are:

- 76 i. Cindy¹¹ Labrie.
- 77 ii. Jerry Labrie, Adopted child.
- 78 iii. Susan Labrie, Adopted child.

NOTES

William J. Labrie (1924–1992) [No. 27] served for about 25 years in the U.S. Air Force. After retiring, he relocated to New York.

Jerry Labrie [No. 77] and Susan Labrie [No. 78] were adopted from Germany.

28. Paul Joseph¹⁰ Labrie (Joseph François Elzear⁹, François⁸, Olivier Mignealt⁷, Alexandre⁶, Joseph Marie⁵, Joseph⁴, Michel Migneault³, Jean Baptist Mignot², Louis¹) was born 22 July 1925 in New Hampshire, and died 03 February 1989. He married **(1) Lucille Charest**. He married **(2) Anna**.

Children of Paul Labrie and Lucille Charest are:

- + 79 i. Denise¹¹ Labrie, born 1950.
 - 80 ii. Maurice Labrie.
 - 81 iii. Edmond Labrie.
-

Generation No. 5

45. Leonard¹¹ Labrie (Pierre¹⁰, Joseph François Elzear⁹, François⁸, Olivier Mignealt⁷, Alexandre⁶, Joseph Marie⁵, Joseph⁴, Michel Migneault³, Jean Baptist Mignot², Louis¹) was born 19 May 1943, and died 21 July 1992. He married **Louise Metivier**.

Children of Leonard Labrie and Louise Metivier are:

- 119 i. Peter A.¹² Labrie.
 - + 120 ii. Ann Marie Labrie.
-

48. Constance¹¹ Labrie (Robert¹⁰, Joseph François Elzear⁹, François⁸, Olivier Mignealt⁷, Alexandre⁶, Joseph Marie⁵, Joseph⁴, Michel Migneault³, Jean Baptist Mignot², Louis¹) was born 20 August 1935. She married **Norman Richard** about 1960.

Children of Constance Labrie and Norman Richard are:

- 121 i. Stephen¹² Richard.
- 122 ii. Matthew Richard, died before 2006.
- 123 iii. Thomas Richard.
- 124 iv. Brian Richard.
- 125 v. Colin Richard.
- 126 vi. Maureen Richard.

NOTES

Thomas Richard [No. 123] was last known to be living in South Dakota.

Maureen Richard [No. 126] was last known to be living in Massachusetts.

Genealogy of the Martel and Blouin Families of French Canada and New England

49. Robert F.¹¹ Labrie (Robert¹⁰, Joseph François Elzear⁹, François⁸, Olivier Mignealt⁷, Alexandre⁶, Joseph Marie⁵, Joseph⁴, Michel Migneault³, Jean Baptist Mignot², Louis¹) was born 23 April 1939. He married **(1) Joyce Saucier** 1962. He married **(2) Gayle Quick** 1986.

Children of Robert Labrie and Joyce Saucier are:

- + 127 i. Michelle¹² Labrie.
- + 128 ii. Lisa Labrie.

50. Gloria¹¹ Labrie (Robert¹⁰, Joseph François Elzear⁹, François⁸, Olivier Mignealt⁷, Alexandre⁶, Joseph Marie⁵, Joseph⁴, Michel Migneault³, Jean Baptist Mignot², Louis¹) was born 24 April 1940. She married **(1) Thomas Leavitt**. She married **(2) Richard Herron**.

Children of Gloria Labrie and Richard Herron are:

- 129 i. Marc¹² Herron.
- 130 ii. Christopher Herron.
- 131 iii. Karen Herron.
- 132 iv. Sherron Herron.
- 133 v. Sherry Herron.

NOTES

Gloria (Labrie) Herron (1940–) [No. 50] resides in Tucson, Arizona.

Marc Herron [No. 129] is a U.S. Air Force Recruiter, residing in Dover, New Hampshire.

Christopher Herron [No. 130] was last known to be living in Germany.

Karen Herron [No. 131] was last known to be living in Connecticut.

Sherron Herron [No. 132] and Sherry Herron [No. 133] are identical twins.

51. Diane¹¹ Labrie (Robert¹⁰, Joseph François Elzear⁹, François⁸, Olivier Mignealt⁷, Alexandre⁶, Joseph Marie⁵, Joseph⁴, Michel Migneault³, Jean Baptist Mignot², Louis¹) was born 20 June 1949. She married **Michael McElhiney**.

Children of Diane Labrie and Michael McElhiney are:

- 134 i. Patrick¹² McElhiney.
- 135 ii. Crystal McElhiney.

NOTES

Diane (Labrie) McElhiney (1949–) [No. 51] was last known to be living in Turlock, California.

52. Lucille¹¹ Roux (Madeleine B.¹⁰ Labrie, Joseph François Elzear⁹, François⁸, Olivier Mignealt⁷, Alexandre⁶, Joseph Marie⁵, Joseph⁴, Michel Migneault³, Jean Baptist Mignot², Louis¹) She married **Jay Jordan**.

Child of Lucille Roux and Jay Jordan is:

- 136 i. Bridgid¹² Jordan.

NOTES

Lucille (Roux) Jordan [No. 52] was last known to be living in Eliot, Maine.

Genealogy of the Martel and Blouin Families of French Canada and New England

56. Paulette Rose¹¹ Godbois (Louise M.¹⁰ Labrie, Joseph François Elzear⁹, François⁸, Olivier Mignealt⁷, Alexandre⁶, Joseph Marie⁵, Joseph⁴, Michel Migneault³, Jean Baptist Mignot², Louis¹) was born 30 May 1948 in Dover, New Hampshire. She married **Anthony Okraska**. He was born in Enfield, Connecticut.

Children of Paulette Godbois and Anthony Okraska are:

- + 137 i. Glen Anthony¹² Okraska, born 24 June 1974.
- 138 ii. Jill Marie Okraska, born 21 August 1976; died 23 August 1976.
- 139 iii. Craig Okraska, born 16 May 1978.
- + 140 iv. Amy Okraska, born 14 September 1979.

NOTES

Paulette (Goldbois) Okraska (1948–) [No. 56] was last known to be living in Loganville, Georgia.

57. Sandra Jean¹¹ Godbois (Louise M.¹⁰ Labrie, Joseph François Elzear⁹, François⁸, Olivier Mignealt⁷, Alexandre⁶, Joseph Marie⁵, Joseph⁴, Michel Migneault³, Jean Baptist Mignot², Louis¹) was born 04 May 1950 in Dover, New Hampshire. She married **Robert Milotte** in Enfield, Connecticut.

Children of Sandra Godbois and Robert Milotte are:

- 141 i. Joseph¹² Milotte.
- 142 ii. Jason Milotte.
- 143 iii. Nicholas Milotte.

NOTES

Sandra (Godbois) Milotte (1950–) [No. 57] and Nicholas Milotte [No. 143] were last known to be living in Loganville, Georgia.

Joseph Milotte [No. 141] and Jason Milotte [No. 142] were last known to be living in Burleson, Texas.

58. Judy Anne¹¹ Godbois (Louise M.¹⁰ Labrie, Joseph François Elzear⁹, François⁸, Olivier Mignealt⁷, Alexandre⁶, Joseph Marie⁵, Joseph⁴, Michel Migneault³, Jean Baptist Mignot², Louis¹) was born 06 October 1954 in Dover, New Hampshire. She married **(1) Ronald Raymond Provost**. He was born in Enfield, Connecticut. She married **(2) Michael Gilbert Audette**. He was born in Springfield, Massachusetts. She married **(3) Fredrick C. Hoell**. He was born 29 January 1951 in Chester, Pennsylvania.

Child of Judy Godbois and Ronald Provost is:

- 144 i. Brian Christopher¹² Provost, born 27 June 1977 in Hartford, Connecticut.

Children of Judy Godbois and Michael Audette are:

- 145 i. Michael Gilbert¹² Audette II, born 18 June 1981 in Springfield, Massachusetts.
- 146 ii. Benjamin Raymond Audette, born 29 December 1982 in Middletown, New York.

NOTES

Judy (Godbois) Hoell (1954–) [No. 58] was last known to be living in Lincolnton, North Carolina.

Michael Gilbert Audette II (1981–) [No. 145] is a horse trainer.

60. Henry¹¹ Paquette II (Antoinette¹⁰ Labrie, Joseph François Elzear⁹, François⁸, Olivier Mignealt⁷, Alexandre⁶, Joseph Marie⁵, Joseph⁴, Michel Migneault³, Jean Baptist Mignot², Louis¹)

Children of Henry Paquette II are:

- 147 i. Scott Wallace¹² Paquette.
 - 148 ii. Melissa Barbara Ann Paquette.
-

Genealogy of the Martel and Blouin Families of French Canada and New England

79. Denise¹¹ Labrie (Paul Joseph¹⁰, Joseph François Elzear⁹, François⁸, Olivier Mignealt⁷, Alexandre⁶, Joseph Marie⁵, Joseph⁴, Michel Migneault³, Jean Baptist Mignot², Louis¹) was born 1950. She married **Pay**.

Child of Denise Labrie and Pay is:

+ 149 i. Lisa Ann¹² Pay.

Generation No. 6

120. Ann Marie¹² Labrie (Leonard¹¹, Pierre¹⁰, Joseph François Elzear⁹, François⁸, Olivier Mignealt⁷, Alexandre⁶, Joseph Marie⁵, Joseph⁴, Michel Migneault³, Jean Baptist Mignot², Louis¹) She married **Day**.

Child of Ann Labrie and Day is:

167 i. Katelyn Marie¹³ Day.

127. Michelle¹² Labrie (Robert F.¹¹, Robert¹⁰, Joseph François Elzear⁹, François⁸, Olivier Mignealt⁷, Alexandre⁶, Joseph Marie⁵, Joseph⁴, Michel Migneault³, Jean Baptist Mignot², Louis¹) She married **Ken Maple**.

Child of Michelle Labrie and Ken Maple is:

168 i. Kelsey¹³ Maple.

128. Lisa¹² Labrie (Robert F.¹¹, Robert¹⁰, Joseph François Elzear⁹, François⁸, Olivier Mignealt⁷, Alexandre⁶, Joseph Marie⁵, Joseph⁴, Michel Migneault³, Jean Baptist Mignot², Louis¹) She married **Kevin Turgeon**.

Child of Lisa Labrie and Kevin Turgeon is:

169 i. Hannah¹³ Turgeon.

137. Glen Anthony¹² Okraska (Paulette Rose¹¹ Godbois, Louise M.¹⁰ Labrie, Joseph François Elzear⁹, François⁸, Olivier Mignealt⁷, Alexandre⁶, Joseph Marie⁵, Joseph⁴, Michel Migneault³, Jean Baptist Mignot², Louis¹) was born 24 June 1974. He married **Amy Elizabeth Wright** 04 September 1994. She was born 25 June 1973 in Daytona, Florida.

Child of Glen Okraska and Amy Wright is:

170 i. Charlotte Rose¹³ Okraska, born 02 April 2000.

NOTES

Glen Anthony Okraska (1974–) [No. 137] was last known to be living in Snelville, Georgia.

140. Amy¹² Okraska (Paulette Rose¹¹ Godbois, Louise M.¹⁰ Labrie, Joseph François Elzear⁹, François⁸, Olivier Mignealt⁷, Alexandre⁶, Joseph Marie⁵, Joseph⁴, Michel Migneault³, Jean Baptist Mignot², Louis¹) was born 14 September 1979. She married **Robert Michael Hardin** 16 January 1999. He was born 18 February 1980.

Child of Amy Okraska and Robert Hardin is:

171 i. Julia Katherine¹³ Hardin, born 21 April 1999.

NOTES

Amy (Okraska) Hardin (1979–) [No. 140] was last known to be living in Savannah, Georgia.

149. Lisa Ann¹² Pay (Denise¹¹ Labrie, Paul Joseph¹⁰, Joseph François Elzear⁹, François⁸, Olivier Migneault⁷, Alexandre⁶, Joseph Marie⁵, Joseph⁴, Michel Migneault³, Jean Baptist Mignot², Louis¹) She married **Thomas Victor Walker, Jr.**

Children of Lisa Pay and Thomas Walker are:

- 172 i. Tamra Joan Walker¹³ Pay.
 - 173 ii. Kyle Patrick-Paul Walker Pay.
-

End of Labrie Family collateral genealogy

99. Donat Arthur¹¹ Martel (Isaïe¹⁰, Godfroi⁹, Jacques⁸, Joseph⁷, Jacques⁶, Paul⁵, Paul⁴, Honoré³ Martel dit Lamontagne, Jean², Jean¹ Martel) was born 16 December 1899 in New Hampshire, and died December 1975. He married **Marie Anne Renaud** 28 May 1924. She was born about 1905 in New Hampshire.

Children of Donat Martel and Marie Renaud are:

- 130 i. Clair¹² Martel.
- 131 ii. Doris Martel.
- 132 iii. Anita Martel, born about 1925 in New Hampshire.
- 133 iv. Robert Martel, born 1926 in New Hampshire; died 1931.
- 134 v. Lionel Martel, born about 1928 in New Hampshire.
- 135 vi. Maurice Martel, born about 1929 in New Hampshire.

NOTES

99. Donat Arthur Martel (1899–1975)

In the 1900 U.S. census, Donat Arthur Martel is listed as a daughter, “Dona”.

Occupations of Donat Arthur Martel (from U.S. censuses and other sources):

- 1917 draft registration: Mill worker (section hand)
- 1920 census: Worker in spool room of cotton mill
- 1930 census: Worker in spinning room of cotton mill

Residences of Donat Arthur Martel (from U.S. censuses and other sources):

- 1917 (WWI draft registration): 7 Roosevelt Ave., Dover, New Hampshire
- 1930 census: Dover, New Hampshire

Donat Martel may have lost a leg.¹² He is buried in St. Charles Cemetery, Dover, New Hampshire

¹² Roland Chretien to Earle Spamer, via telephone, 2004.

Children of Donat Martel

Robert Martel (1926– 1931) [No. 133] and Lionel Martel (ca. 1928–) [No. 134] are buried in Dover, New Hampshire.

100. Alice¹¹ Desrochers (Evelina¹⁰ Hamel, Cleophas⁹, Therese⁸ Martel, Modeste⁷, Paul⁶, Paul⁵, Paul⁴, Honoré³ Martel dit Lamontagne, Jean², Jean¹ Martel) She married **Amedee Tremblay** 15 February 1926.

Children of Alice Desrochers and Amedee Tremblay are:

- 136 i. Tremblay¹².
 - 137 ii. Tremblay.
-

Generation No. 12

101. Palmina Marie¹² Martel (Joseph I.¹¹, Isaïe¹⁰, Godfroi⁹, Jacques⁸, Joseph⁷, Jacques⁶, Paul⁵, Paul⁴, Honoré³ Martel dit Lamontagne, Jean², Jean¹ Martel) was born 26 February 1901 in Dover, New Hampshire, and died 07 February 1987 in nursing home in Sewell, New Jersey. She married **(1) Joseph Armand Arthur Blouin** [Arthur Blouin] 31 August 1919 in Lowell, Massachusetts, son of Augustin Blouin and Céline Boutin. He was born 15 May 1896 in St-Anselme, Bellechasse Co., dio. Québec, and died 17 July 1930 in Lowell Corporation Hospital, Lowell, Middlesex Co., Massachusetts. She married **(2) Joseph Leo Sylvester** [Leo Sylvester] after 1930, son of Adelard Sylvester and Adeline. He was born 01 April 1895 in Lowell, Middlesex Co., Massachusetts, and died 15 February 1958 in Veterans Hospital, Wilmington, Delaware. She married **(3) Thomas Bert Kears** [Bert Kears] after 1958, son of Charles Kears and Anna. He was born 09 March 1905 in New Jersey, and died May 1968 in Vineland, Cumberland Co., New Jersey.

Child of Palmina Martel and Joseph Blouin is:

- + 138 i. Jeannette Leda¹³ Blouin, born 12 August 1920 in Lowell, Massachusetts; died 01 November 1987 in Underwood Memorial Hospital, Woodbury, Gloucester Co., New Jersey.

See Section B for Blouin lineage and notes about Arthur Blouin.

NOTES

101. Palmina Marie Martel (1901–1987)
“Pauline”

Palmina Martel was baptized by Rev. J. J. Richard on 26 February 1901 in St. Charles Parish, Diocese of Manchester, Dover, New Hampshire. According to the baptismal record (a copy signed by Rev. Alphiri Lanzure, 21 April 1919), her godparents were Joseph Labrie and Roanna Arnold.

She was known as Palmina, but by the time she had moved to Vineland, New Jersey, with her husband, Leo Sylvester, she was using the name “Pauline”. When, after the death of her third husband, Bert Kears, she resided with her daughter’s family, after encouragement from family members she returned to using her given name, Palmina.

Genealogy of the Martel and Blouin Families of French Canada and New England

The Lowell, Massachusetts, Marriage Intentions for 1919 list Arthur Blouin and Palmina Martel during the week ended 23 August 1919. At the time of the 1920 U.S. census, Arthur and Palmina Blouin are residing at her parents' home in Lowell, Massachusetts. At the time of the 1930 census, Arthur and Palmina resided in Lowell with their daughter, Jeannette.

Occupations of Palmina (Martel) Blouin (from U.S. censuses):

1920: Twister in cotton mill

1930: Mail sorter for the [Gillette] carbonizing plant

After Arthur Blouin's death in early 1930, Palmina Blouin resided at 249 Westford St., Lowell; she is listed in the city directory then as Pauline Blouin.¹³ This is the first record of her being called "Pauline", a name that she used for most of her adult life, returning to "Palmina" in the 1970s. Pauline Blouin is not listed in Lowell city directories after 1931. Just when she married Leo Sylvester is not known at this time. Leo and Pauline Sylvester lived in New York City during part of the Depression. Her daughter, Jeannette, remained in Lowell, raised by her mother's relatives. In 1935, Leo and Pauline moved to Vineland, Cumberland Co., New Jersey, where the two of them operated a tavern (Leo's Lobster House was one name) and one or two motels named "Pauline's Motel". All of these businesses were on adjacent corners at the intersection of Delsea Drive (New Jersey Rt. 47) and Sherman Ave. (Cumberland County Rt. 552), in South Vineland—the tavern on the northeast corner, the motel on the southwest corner. The motel had individual small cabins along an "L"-shaped driveway opening both to Delsea Drive and Sherman Ave., and a row of about eight connected small, one-bedroom rental apartments parallel to Delsea Drive. The apartments were a later construction, but just when they were added is not known. In the early 1950s, when the adjacent property to the west was acquired, some of the cabins were taken down, and part of a wooded area to the west was used to construct a three-sided block (open to the east) of modern motel rooms.

The Sylvesters lived in a block-shaped, single-story house on the motel property, which was elevated over a tall, enclosed basement level. By the early 1950s they had built a new ranch house on an adjacent property to the west of the motel, along the south side of Sherman Ave. The ice machine at the newer block of motel rooms was a novelty to me as a small boy. And taking the trash out to a small, open cinderblock enclosure—the incinerator—was likewise eventful for a city boy.

After Leo Sylvester's death, Pauline married Bert Kears, an electrical contractor, and continued to operate Pauline's Motel. When they retired, about 1965, they moved into one of the small apartments adjacent to the motel, until Bert Kears' death. Pauline then moved to her daughter's home at 637 Hunter St., Gloucester City, Camden Co., New Jersey, where she lived until placed in a nursing home in Sewell, New Jersey, about 1985. She died in the nursing home two years later.

Palmina (Martel) Kears is buried in Bethel Cemetery, Delsea Drive, Hurffville, Gloucester Co., New Jersey (section G, lot 2, grave 3 or 4). As of 2007 there was no marker on her grave.

¹³ Lowell city directory, 1931.



(Spamer253)



(Spamer711)



(Spamer 1008)



(Spamer 1023)

Palmina Marie Martel (1901–1987) [No. 101]

(*Top left*) Palmina Martel, aged 9 months, 1901, in Dover, New Hampshire. (*Top right*) Palmina, 27 July 1917, location not known. (*Lower left*) Palmina Martel, date and location not known. (*Lower right*) Wedding day, 31 August 1919, Arthur and Palmina Blouin.



(Spamer 1362)



(Spamer 1313)

(Top left) Palmina Sylvester with her daughter, Jeannette (Blouin) Spamer; location and date not known.

(Top right) Left to right: Leo Sylvester, Palmina Sylvester, with her parents, Josephine and Joseph Martel; probably at the office of the gas station run by Leo Sylvester, northeast corner of Delsea Drive and Sherman Ave., Vineland, New Jersey, probably in 1939.

(Bottom left) Palmina and Leo Sylvester aboard their boat, probably on the Maurice River or on Union Lake, near Millville, New Jersey; mid-1950s. (Bottom right) Leo Sylvester and an unidentified barman; location and date not known.



(Spamer 293)



(Spamer 1434)



(Spamer 747)



(Spamer 1166)

(*Top*) Palmina and Leo Sylvester (*right*) with Bert Kears (*left*), mid-1950s, probably near Millville, New Jersey. (*Bottom*) Bert and Palmina Kears, mid-1960s, at their apartment adjacent to “Pauline’s Motel”, southwest corner of Delsea Drive and Sherman Ave., Vineland, New Jersey. The motel had been run by Palmina since after World War II, but by the mid-1960s the Kearses had retired and moved from the motel residence to the nearby small apartments that were part of the same property.

After the death of Palmina’s first husband, Arthur Blouin, in 1930, Palmina married Leo Sylvester, a native of Lowell, Massachusetts, and they eventually moved to Vineland, New Jersey. Bert Kears was a native of Millville, but how he came to know the Sylvesters is not known at this time. Sometime after Leo died in 1958, Palmina married Bert Kears. After Bert’s death in 1968, she moved to live with her daughter, Jeannette Spamer, in Gloucester City, New Jersey.



(Spamer1311, 1312)



(Spamer 1161)

(Center) Jeannette Spamer poorly advertises “Heated Cabins”, early 1940s.

(Spamer photo)

When Palmina and Leo Sylvester moved to Vineland, New Jersey, during the 1930s, they established businesses in South Vineland at the intersection of Delsea Drive (NJ Route 47) and Sherman Ave. (Cumberland County Rt. 552).

(Two top photos) The rudimentary motel and gas station on the northeast corner, probably in the early 1940s. Photos not necessarily taken at the same time. In top photo, the figures standing are (left to right) Palmina Sylvester, Leo Sylvester, and Palmina’s parents Josephine and Joseph Martel, who were visiting from New England.

(Bottom) Corresponding view taken in 2004; no original structures remain.





(Spamer 1308)

(Left and center right) Two views of the tavern owned by Leo and Palmina Sylvester on the northeast corner of Delsea Drive and Sherman Ave. They always referred to the business just as “the place”. The two photos were taken on the same day, as suggested by the placement of the automobiles seen behind Palmina.

(Left) Palmina Sylvester.



(Spamer 1309)

(Above) Jeannette Spamer stands in front of her mother and stepfather’s tavern.



(Spamer 1310)

(Left) Jeannette Spamer poses as if pumping gas at the Gulf Oil gas station also operated by the Sylvesters.

(Below) Conoco gas station and (to right) what appears to be a small farm stand. (The timing of the Gulf and Conoco stations is not known.)



(Spamer 1299)



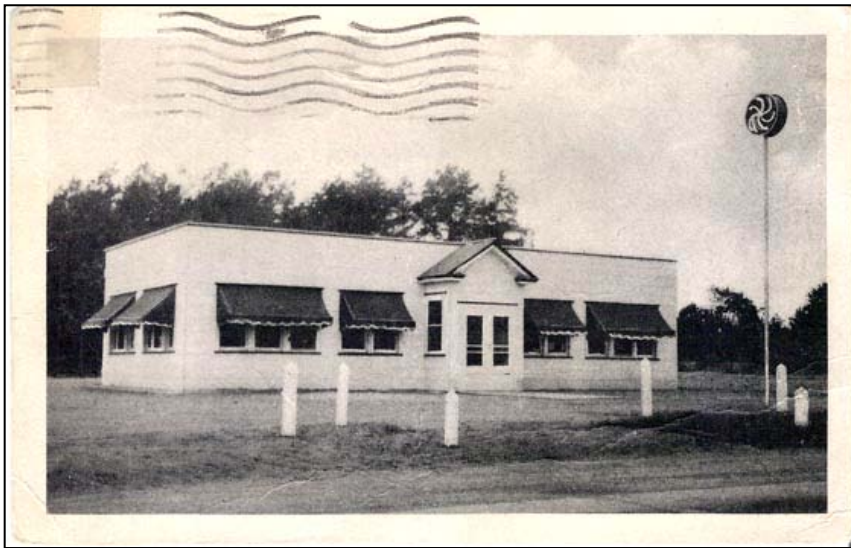
(Spamer 753)

(This page)

Original and later configurations of the restaurant and tavern operated by Leo and Palmina Sylvester on the northeast corner of Delsea Drive and Sherman Ave.

It was here that Jeannette L. Blouin met her future husband, Edward L. Spamer, whose Pennsylvania National Guard unit was stationed at the Vineland National Guard Amory a short distance north on Delsea Drive. The engineers unit was building the Millville Army Air Station. (See **Part I: Spamer Family**).

(Center, right) Jeannette Spamer and her stepfather and mother, Leo and Palmina “Pauline” Sylvester.



(Spamer 751)



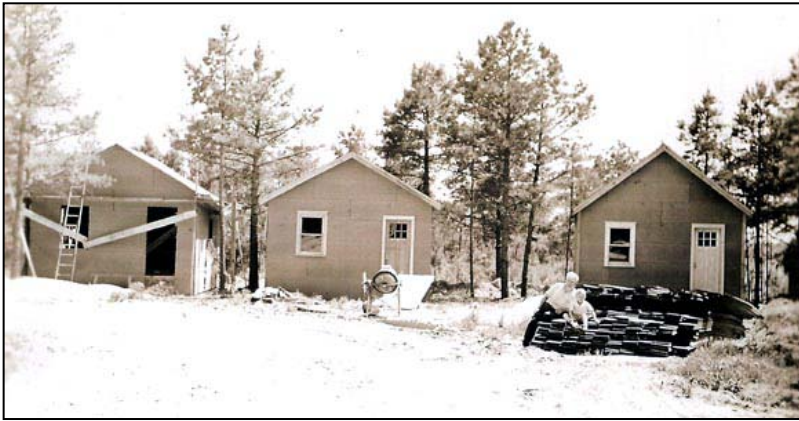
(Spamer 951)

(Center, left) The first dining establishment operated by Leo and Palmina Sylvester at Delsea Drive and Sherman Ave. was Leo and Pauline’s Lobster House, seen here in an undated advertising postcard. The advertisement on the reverse reads, “*Leo and Pauline’s Lobster House Sherman Avenue, Delsea Drive Half Way between Vineland and Millville — New Jersey — Tel. 147-R-1 Route 47 If it Swims We Have It*”.

The business was later converted to a tavern, two interior views of which are seen at *top* and *bottom*. At *right*, Palmina Sylvester stands behind the bar; the woman seated may be Jeannette Spamer. (At *top*, the boy behind the left shuffleboard table is not identified.)

(Spamer 752)





(Spamer 1420)

After World War II, Leo and Palmina Sylvester built a new motel on the southwest corner of Delsea Drive and Sherman Ave., which Palmina ran as Pauline's Motel. It first was a series of small, individual cabins (at *left*, seen under construction, and in the two *center* photos seen in use). The motel continued in operation until Palmina and her third husband, Bert Kears, sold it and retired ca. 1965. (*Center, left*, view westward from in front of the motel office.)



(Spamer, not cataloged)

(*Center, right*) Left to right: Edward L. Spamer and his wife, Jeannette, and daughter, Carol, ca. 1950. Standing at rear is Jeannette's uncle (by marriage), Napoleon "Joe" Chretien. The steps seen to the right are the steps to the motel office, part of the Sylvester residence (which is better seen in the photo at *bottom, left*, with the office sign above the door).

(Spamer, not cataloged)



(Spamer 568)

(*Bottom left*) In the 1950s, the rear row of cabins was razed and a block of conjoined motel units was built (seen in the background). Carol Spamer poses, Easter 1960. (*Bottom right*) Palmina Sylvester with her daughter and grandson, Jeannette and Earle Spamer, ca. 1956. When they visited, the Samers always stayed in the cabin closet to the office (seen here).



(Spamer 745)



(Spamer 575)

(Left and center right) The residence at Pauline's Motel.

(Left) Palmina Kears, with her grandchildren, Carol and Earle Spamer, ca. 1962. In background is seen the southern and eastern sides of the residence, with the steps to the office on the south.

(Center right) Carol Spamer in front of the eastern side of the residence, ca. 1950.



(Spamer, not cataloged)



(Spamer 574)

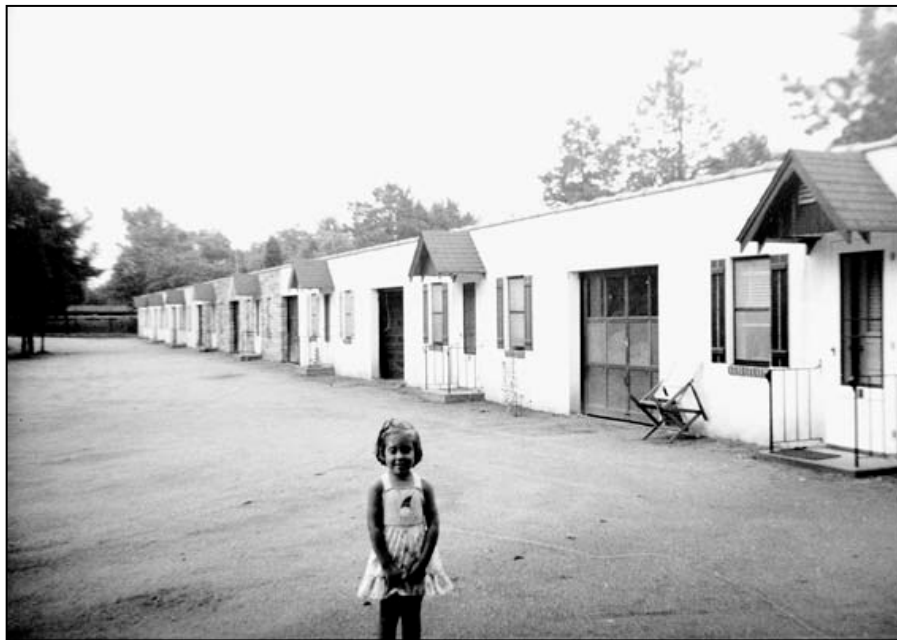
(Center left) Palmina Sylvester and daughter, Jeannette Spamer. View is from the residence looking east to Delsea Drive, Easter 1960. (The gas station is on the southeast corner with Sherman Ave.; it is not the Sylvester business mentioned elsewhere herein.) (Below) Approximately the same view as at left, taken in 2004 when the property was occupied by a Wawa convenience store and gas station. (After the motel had been razed, the property had first been occupied by a small bank.)



(Spamer photo)



(Spamer 571)



(Spamer, not cataloged)

(*Top*) Palmina Sylvester with her daughter and grandson, Jeannette and Earle Spamer; Easter 1960. In the background can be seen the roadside neon sign for Pauline's Motel on Delsea Drive (also see detail, *top left*).

(*Left*) Adjacent to Pauline's Motel also was built a line of about eight efficiency apartments as part of the property. In this southward view, Carol Spamer poses, ca. 1950. The apartment driveway paralleled Delsea Drive (which runs to the left of this view, separated by a strip of trees and grass about 50 feet wide).

After Palmina and Bert Kears retired ca. 1965 and sold Pauline's Motel, they moved into one of the small apartments adjacent to the motel. At *right* is their apartment, in a photo taken 30 December 1967. It may be the third doorway as seen in the center photo.



(Spamer 1428)



(Spamer 743)

Carol Spamer and her brother, Earle, sit on the fence at the home of their grandmother and step-grandfather, Palmina and Leo Sylvester, ca. 1955. The small rancher (which no longer stands) was built on property immediately to the west of Pauline's Motel, on the south side of Sherman Ave. Sometime after the death of Leo Sylvester in 1958, Palmina moved to the residence on the motel property, where she lived with her third husband, Bert Kears.

Genealogy of the Martel and Blouin Families of French Canada and New England

Joseph Leo Sylvester (1895–1958)
(husband of Palmina Martel)
“Leo”

In the 1900 U.S. census, his name is given as Leorder Sylvester. He is buried in the Veterans Plot, Mount Pleasant Cemetery, Millville, Cumberland Co., New Jersey. His grave has a military marker: “Joseph L. Sylvester, Massachusetts, PVT HQ Co 326 Infantry, WWI, April 5, 1895-February 15, 1958”.

Occupations of Leo Sylvester (from U.S. censuses and other sources):

1917 (WWI draft registration): Weaver

1920, 1930 censuses: Weaver in cotton mill

Residences of Leo Sylvester (from U.S. censuses and other sources):

1917 (WWI draft registration) and 1920 census: 488 Fletcher St., Lowell, Middlesex Co., Massachusetts

1930: 3 Bockdale Ave., Lowell, Middlesex Co., Massachusetts (roomer)

See notes with Palmina Martel, above, for additional information on occupations and residences.

For information about the Sylvester family, see the Sylvester Family collateral genealogy, below.

Thomas Bert Kears (1905–1968)
(husband of Palmina Martel)
“Bert”

He was an electrician and electrical contractor during most of his working years. At the time of the 1920 U.S. census, he and his father, a widower, are residing in the household of his brother, Charles P. Kears, Jr.; he is listed there as “Bert T. Kears”. In the 1930 census he is listed as “Michael B. Kears”, but coincidental data with him indicate that this is Bert: “Michael B. Kears”, aged 25, resided at 318 Foundry St., Millville, Cumberland Co., New Jersey, employed as an electrician in an electric-light company; also residing with him is his father, Charles P. Kears, aged 70, a laborer in a glass factory.¹⁴

¹⁴ Millville was a glass-making center, turning out not only large-scale commercial glass productions but also specialized laboratory equipment. The city today hosts the Museum of American Glass. The town originated probably in the early 1700s when a sawmill is believed to have existed around 1720. Lumbering advanced later in the century when investors acquired what is now known as the Union Mills Tract, establishing lumber mills on the Maurice River and building a dam to store water for the mills’ use. James Lee, an Irish immigrant, moved to the area in 1806 and established a glass factory, using the rich supplies of sand that occur in southern New Jersey. The expanding industry attracted immigrant workers through the 19th century. A bleachery and dye house was also founded during this time, as was an iron foundry. The records of one such pipe-manufacturing company, Cumberland Furnace, are in the papers of R. D. Wood & Co., now in the Historical Society of Pennsylvania (Collection 1176). The city was economically depressed by the middle of the 20th century, although today it seems some revival in cultural areas. (>>Wikipedia informational website, <http://en.wikipedia.org>; City of Millville website, <http://millvillev2.Qscend.com>; and “Museum of American Glass” in Wheaton Arts website, <http://www.wheatonarts.org/museumamericanglass/aboutmuseum>; all accessed 1 Nov 2006.) The conditions of the Millville factories by the turn to the 20th century inspired the development of child labor laws in New Jersey, where in 1900 it was common for children under the age of 15 were in meager, unhealthful employment and not in school. As noted in a 1902 report, “Many of the children in the glass works and in worsted mills are said to have been employed on ‘night shifts.’ If the children in state reformatories were worked half as hard as the children in the factories, there would be a perfect storm of indignation.” While this referred to factories statewide, the Millville sites were certainly a portion of the statistics. (Hugh F. Fox,

[note cont’d →

Genealogy of the Martel and Blouin Families of French Canada and New England

Occupations of Bert Kears (from U.S. censuses):

1920: Blower in glass company [factory]

1930: Electrician in electric-light company

Residences of Bert Kears (from U.S. censuses):

1920: 520 Back St., Millville, Cumberland Co., New Jersey (in brother's household)

1930: 318 Foundry St., Millville, Cumberland Co., New Jersey

Bert Kears died suddenly at home. Burial arrangements were handled by Christy Funeral Home, Millville, New Jersey. Others Kears relations who attended his funeral were John P., Charles, and Paul Kears (their relationships to Bert are as yet undetermined).

See notes with Palmina Martel, above, for additional information on occupations and residences.

For information about the Kears family, see the Kears Family collateral genealogy, below.

Martel Family genealogy continues after the following collateral genealogy

Sylvester Family Collateral Genealogy

(11 descendants)

The genealogy of the Sylvester family, as it relates to our Martel lineage and as currently understood, is as follows:

Descendants of Adelard Sylvester

Generation No. 1

1. Adelard¹ Sylvester was born March 1869 in Canada. He married **Adeline**. She was born March 1875 in Canada.

Children of Adelard Sylvester and Adeline are:

- + 2 i. Adelard² Sylvester, born 16 March 1893 in Massachusetts; died April 1967.
- 3 ii. Joseph Leo Sylvester, born 01 April 1895 in Lowell, Massachusetts; died 15 February 1958 in Veterans Hospital, Wilmington, Delaware. He married **Palmina Marie Martel** after 1930; born 26 February 1901 in Dover, New Hampshire; died 07 February 1987 in Nursing home in Sewell, New Jersey.
- 4 iii. Florida Sylvester, born May 1896 in Massachusetts.
- + 5 iv. Romeo Sylvester, born August 1897 in Massachusetts; died after February 1958.
- 6 v. Erma or Emma Sylvester, born August 1899 in Massachusetts.

"Child Labor in New Jersey", *Annals of the American Academy of Political and Social Science*, Vol. 20 (Jul 1902), pp. 191-199.)

Millville is also the site of the Millville Army Air Station, the nation's first defense airport (today it is the municipal airport), which features in the life of Edward L. Spamer (see **Part I, Spamer Family**). He was with the Pennsylvania National Guard unit that was assigned to the U.S. Army Corps of Engineers to build the air station's runways in 1941.

NOTES

1. Adelard Sylvester (1869–)

Occupations of Adelard Sylvester (1869–) [No. 1] (from U.S. censuses and city directory):

1890 Lowell city directory: Laborer
1900 census: Second hand in cotton mill
1920 census: Machine fixer in hosiery mill

Residences of Adelard Sylvester (from U.S. censuses and city directory):

1890 city directory: "house Thompson block, Coolidge"
1900 census: 88 Ford St., Lowell, Middlesex Co., Massachusetts (rooming house)
1920 census: 488 Fletcher St., Lowell, Middlesex Co., Massachusetts

In the 1900 census, Adelard Sylvester indicated his date of immigration as 1877, and he was still at that time an alien resident in the U.S. In the 1920 census, his date of immigration is given as 1886, and that he was a naturalized citizen in 1899.

Children of Adelard and Adeline Sylvester

For information about Joseph Leo Sylvester (1895–1958) [No. 3] and his wife, Palmina (Martel) Sylvester, see the main Martel Family genealogy.

At the time of the 1920 census, Florida Sylvester (1896–) [No. 4] was a salesgirl in a baby [or bakery] shop; she resided at 488 Fletcher St., Lowell, Middlesex Co., Massachusetts.

At the time of the 1920 census, Erma or Emma Sylvester (1899–) [No. 6] was a salesgirl in a department store; she resided at 488 Fletcher St., Lowell, Middlesex Co., Massachusetts.

Generation No. 2

2. Adelard² Sylvester (Adelard¹) was born 16 March 1893 in Massachusetts, and died April 1967. He married **Blanche** about 1917. She was born about 1897 in Massachusetts.

Children of Adelard Sylvester and Blanche are:

- 7 i. Rita³ Sylvester, born about 1921 in Massachusetts.
- 8 ii. Theresa Sylvester, born about 1923 in Massachusetts.
- 9 iii. Conrad Sylvester, born about 1926 in Massachusetts.

NOTES

Adelard Sylvester (1893–1967) [No. 2] was known as "Pete".

Occupations of Adelard Sylvester (from U.S. censuses and other sources):

1917 draft registration: Machinist helper, B&M Car Shop, North Billerica, Massachusetts
1920 census: Machinist in car shop
1930 census: Butcher in grocery store

Residences of Adelard Sylvester (from U.S. censuses and other sources):

1917 draft registration: 7 Dempsey Lane, Lowell, Middlesex Co., Massachusetts
1920 census: 488 Fletcher St., Lowell, Middlesex Co., Massachusetts
1930 census: 19 Rockdale Ave., Lowell, Middlesex Co., Massachusetts
At death: Lowell, Middlesex Co., Massachusetts

5. Romeo² Sylvester (Adelard¹) was born August 1897 in Massachusetts, and died after February 1958. He married **Rose A.** about 1922. She was born about 1904 in New Hampshire.

Genealogy of the Martel and Blouin Families of French Canada and New England

Children of Romeo Sylvester and Rose are:

- 10 i. Roland³ Sylvester, born about 1924 in Massachusetts.
- 11 ii. Doris Sylvester, born about December 1925 in Massachusetts.

NOTES

Occupations of Romeo Sylvester (1897–after February 1958) [No. 5] (from U.S. censuses):

- 1920: Machine helper in cotton mill
- 1930: Second hand in cotton mill

Residences of Romeo Sylvester (from U.S. censuses):

- 1920: 488 Fletcher St., Lowell, Middlesex Co., Massachusetts
- 1930: 158 Salene(?) St., Lowell, Middlesex Co., Massachusetts (rooming house)
- 1958: California

[Also see Additions & Corrections](#)

End of Sylvester Family collateral genealogy

Kears Family Collateral Genealogy

(21 descendants¹⁵)

The genealogy of the Kears family, as it relates to our Martel lineage and as currently understood, is as follows:

Descendants of Charles P. Kears, Sr.

Generation No. 1

1. **Charles P.¹ Kears, Sr.** was born January 1860 in New Jersey. He married **Anna**. She was born October 1864 in New Jersey, and died before 1920.

Children of Charles Kears and Anna are:

- 2 i. Lena² Kears, born August 1885 in New Jersey.
- + 3 ii. Charles P. Kears, Jr., born 12 February 1889 in New Jersey.
- + 4 iii. Paul Kears, born April 1891 in New Jersey.
- 5 iv. Mary Kears, born January 1895 in New Jersey.
- + 6 v. Thomas Bert Kears, born 09 March 1905 in New Jersey; died May 1968 in Vineland, Cumberland Co., New Jersey.

NOTES

Occupations of Charles P. Kears, Sr. (1860–) [No. 1] (from U.S. censuses):

- 1900: Day laborer
- 1910: Glass worker in glass factory
- 1920: Glass blower for glass company

Residences of Charles P. Kears, Sr. (from U.S. censuses):

- 1900, 1910: 13 Sharp St., Millville, Cumberland Co., New Jersey
- 1920: 520 Back St., Millville, Cumberland Co., New Jersey

Anna Kears, wife of Charles P. Kears, Sr., was known as “Annie”.

¹⁵ This collateral genealogy also contains the Sayres collateral lineage (20 descendants). The sum given above does not include these individuals.

Genealogy of the Martel and Blouin Families of French Canada and New England

At the time of the 1900 census, Lena Kears (1885–) [No. 2] was a spinner in a cotton mill.

At the time of the 1910 census, Mary Kears (1895–) [No. 5] was a sewer in a mill.

Generation No. 2

3. Charles P.² Kears, Jr. (Charles P.¹) was born 12 February 1889 in New Jersey. He married **Luella or Louella** before April 1910. She was born about 1892 in New Jersey.

Children of Charles Kears and Luella are:

- 7 i. Josephine³ Kears, born about 1911 in New Jersey.
- + 8 ii. Reba Kears, born about 1913 in New Jersey.
- 9 iii. Lucilla Kears, born about 1914 in New Jersey.
- 10 iv. John P. Kears, born 01 January 1915 in New Jersey; died 02 January 1994.
- 11 v. Beulah Kears, born about 1918 in New Jersey.
- 12 vi. Charles P. Kears, III, born 21 July 1921 in New Jersey; died 20 September 1999.
- 13 vii. Mabel Kears, born about 1923 in New Jersey.
- 14 viii. Paul Kears, born about 1928 in New Jersey.

NOTES

Charles P. Kears, Jr. (1889–)

Occupations of Charles P. Kears, Jr. (from U.S. censuses and other sources):

- 1900 census: Tending boy
- 1910 census: Glass worker in glass factory
- 1917 draft registration: Glass worker, Whitall Tatum, Millville, New Jersey
- 1920 census: Nailer in glass company
- 1930 census: Truck man in cotton mill

Residences of Charles P. Kears, Jr. (from U.S. censuses and other sources):

- 1910 census: 13 Sharp St., Millville, Cumberland Co., New Jersey
- 1917 draft registration and 1920 census: 520 Back St., Millville, Cumberland Co., New Jersey
- 1930 census: 506 Sharp St., Millville, Cumberland Co., New Jersey

At the time of the 1910 census, he and his wife are living with his father and family.

In the 1930 census he name is spelled "Keers".

Luella or Luella Kears (ca. 1892–) (wife of Charles P. Kears, Jr.)

In the 1900 U.S. census there is a Louella Shaw, born March 1892, daughter of Leonard(?) and Jennie Shaw, residing at 309 2nd St., Millville, New Jersey; she may be the person who later was the wife of Charles P. Kears, Jr. (Leonard's occupation was as a flint glass blower.)

At the time of the 1930 census, she was a spinner in a cotton mill.

Children of Charles P. and Luella (or Louella) Kears

At the time of the 1930 census, Josephine Kears (ca. 1911–) [No. 7] was a tearer in a cotton mill.

John P. Kears (1915–1994) [No. 10] enlisted in the U.S. Army on 8 October 1942 in Camden, Camden Co., New Jersey. He is noted then to have had only a grammar school education, and was single with dependents.

At the time of his death, John P. Kears resided in Millville, Cumberland Co., New Jersey.

Charles P. Kears, III (1921–1999) [No. 12] enlisted in the U.S. Army on 8 October 1942 in Camden, Camden Co., New Jersey. He is noted then to have had one year of high school education, and his occupation was "electric truck driver"; he was then single with out dependents. He was discharged from the Army with the

rank of Corporal.

Charles P. Kears, III, is buried in Mount Pleasant Cemetery, Millville, Cumberland Co., New Jersey.

4. Paul² Kears (Charles P.¹) was born April 1891 in New Jersey. He married **Lola** about 1911. She was born about 1895 in New Jersey.

Children of Paul Kears and Lola are:

- 15 i. Mary³ Kears, born about 1912 in New Jersey.
- 16 ii. Anna Kears, born about 1914 in New Jersey.
- 17 iii. Florence Kears, born about 1915 in New Jersey.
- 18 iv. Emma Kears, born about 1917 in New Jersey.

NOTES

Occupations of Paul Kears (1891–) [No. 4] (from U.S. censuses):

1910: Glass worker in glass factory

1930: Janitor at gas works

Residences of Paul Kears (from U.S. censuses):

1910: 13 Sharp St., Millville, Cumberland Co., New Jersey

1930: 520 Sharp St., Millville, Cumberland Co., New Jersey

At the time of the 1930 census, Mary Kears (ca. 1912–) [No. 15] and Anna Kears (ca. 1914–) [No. 16] both were spinners in a cotton mill.

6. Thomas Bert² Kears (Charles P.¹) was born 09 March 1905 in New Jersey, and died May 1968 in Vineland, Cumberland Co., New Jersey. He married **(1) Margaret Sayres** about 1925, daughter of Hollingshead Sayres and May Fithian. She was born 1907 in New Jersey. He married **(2) Palmina Marie Martel** after 1958, daughter of Joseph Martel and Joséphine Arnold. She was born 26 February 1901 in Dover, New Hampshire, and died 07 February 1987 at a nursing home in Sewell, New Jersey.

Children of Thomas Kears and Margaret Sayres are:

- 19 i. Alice³ Kears, born about January 1927 in New Jersey.
- 20 ii. Thomas Bert Kears, Jr., born 05 August 1933 in New Jersey; died December 1985 in Wabasso, Indian River Co., Florida.

See main Martel Family genealogy for information relating to Palmina (Martel) and Thomas Bert Kears.

Regarding the family of Margaret Sayres (1907–), wife of Thomas Bert Kears, the following information is noted:

Descendants of James Sayres

Generation No. 1

1. James¹ Sayres was born 1805. He married **Phoebe Daniels**. She was born 1813, and died 28 September 1875.

Child of James Sayres and Phoebe Daniels is:

- + 2 i. James L.² Sayres, born 1843.
-

Generation No. 2

2. James L.² Sayres (James¹) was born 1843. He married **Elizabeth D. Thompson**. She was born 1846 in New Jersey.

Genealogy of the Martel and Blouin Families of French Canada and New England

Children of James Sayres and Elizabeth Thompson are:

- | | | |
|-----|-------|--|
| 3 | i. | George B. ³ Sayres, born 1864. |
| 4 | ii. | Elizabeth D. Sayres, born 1866. |
| 5 | iii. | Joanna H. Sayres, born 1868. |
| 6 | iv. | Emma Sayres, born 14 February 1870. |
| 7 | v. | James L. Sayres, born 05 February 1874; died 06 February 1874. |
| + 8 | vi. | Hollingshead Thomas Sayres, born 16 April 1875. |
| 9 | vii. | Albert C. Sayres, born 01 April 1877. |
| 10 | viii. | Eva M. Sayres, born 12 May 1879; died 18 September 1879. |
| 11 | ix. | Sayres, born 23 July 1884. |

NOTES

Elizabeth D. Sayres (1866–) [No. 4] was known as “Lizzie”.

Generation No. 3

8. Hollingshead Thomas³ Sayres (James L.², James¹) was born 16 April 1875. He married **May Fithian** 1898, daughter of David Fithian and Clarissa Pettit. She was born 1882.

Children of Hollingshead Sayres and May Fithian are:

- | | | |
|------|-------|--|
| 12 | i. | Eva ⁴ Sayres, born 29 December 1898; died November 1978 in Millville, Cumberland Co., New Jersey. She married Nicholas J. Decinque; born 12 July 1897; died September 1974 in Vineland, Cumberland Co., New Jersey. |
| 13 | ii. | Lillian Sayres, born 31 January 1901; died August 1973 in Millville, Cumberland Co., New Jersey. She married Charles Kurth; born 04 August 1893; died November 1985 in Millville, Cumberland Co., New Jersey. |
| + 14 | iii. | Margaret Sayres, born 1907 in New Jersey. |
| 15 | iv. | Irene Sayres, born 1908. She married Harlan Henderson; born 20 February 1897; died 12 February 1989 in Millville, Cumberland Co., New Jersey. |
| 16 | v. | Ella Sayres, born 1912. |
| 17 | vi. | Clarissa Sayres, born 1915. |
| 18 | vii. | Hollie Sayres, born 10 October 1916; died 01 January 1992. |
| 19 | viii. | William Sayres, born 1918. |
| 20 | ix. | Betty Sayres. |

Notes

Hollingshead Sayres (1875–) [No. 8] was known as “Hollie”.

Generation No. 4

14. Margaret⁴ Sayres (Hollingshead Thomas³, James L.², James¹) was born 1907 in New Jersey. She married **(1) Thomas Bert Kears** about 1925, son of Charles Kears and Anna. He was born 09 March 1905 in New Jersey, and died May 1968 in Vineland, Cumberland Co., New Jersey. She married **(2) Al Collingswood** after 1933.

See Kears Family collateral genealogy for information relating to Margaret (Sayres) and Thomas Bert Kears and their descendants.

End of Sayres family lineage

Kears Family collateral genealogy continues:

20. Thomas Bert Kears, Jr. (1933–1985)

He, like his father, was known as “Bert”.

Genealogy of the Martel and Blouin Families of French Canada and New England

Generation No. 3

8. Reba³ Kears (Charles P.², Charles P.¹) was born about 1913 in New Jersey. She married **Otley Norbury** about 1928.

Child of Reba Kears and Otley Norbury is:

- 21 i. Otley⁴ Norbury, Jr., born about December 1928 in New Jersey.

NOTES

At the time of the 1930 U.S. census, Reba (Kears) Norbury (ca. 1913–) [No. 8] and her son were residing with her father. She was at the time a presser in a clothing plant.

In the 1930 census, Otley Norbury (Sr.), husband of Reba (Kears) Norbury, does not seem to be registered. There is an Otley Norbury, father-in-law, aged 54, widower, occupation machinist, residing in the John Moore household at 310 Maple Ave., Millville, Cumberland Co., New Jersey.

End of Kears Family collateral genealogy

103. Odina¹² Martel (Joseph I.¹¹, Isaïe¹⁰, Godfroi⁹, Jacques⁸, Joseph⁷, Jacques⁶, Paul⁵, Paul⁴, Honoré³ Martel dit Lamontagne, Jean², Jean¹ Martel) was born 10 July 1904, and died 16 June 2000. He married **Agnes J. Deveau** 24 September 1929, daughter of Edmund Deveau and Margaret. She was born about 1903 in Massachusetts.

Children of Odina Martel and Agnes Deveau are:

- 139 i. Arnold¹³ Martel, born about 1931.
140 ii. Donald Martel, born about 1933. He married Sandra 1957.
+ 141 iii. Olia E. Martel, born about February 1936.
142 iv. Ola Janet Martel, born about April 1937. She married Plante.

NOTES

103. Odina Martel (1904–2000)

Occupations of Odina Martel (from U.S. censuses and other sources):

1920: Box maker in paper factory

Later: Farmer

Residences of Odina Martel (from U.S. censuses and other sources):

1956-1962 at least: 189 South Road, Deerfield, Rockingham Co., New Hampshire

1975: Deerfield, Rockingham Co., New Hampshire [not at 189 South Road]

The Lowell Marriage Intentions list Odina Martel and Mary Agnes Deveau on 21 September 1929.

Agnes (Deveau) Martel (ca. 1903–)
(wife of Odina Martel)

Agnes J. Deveau has also been cited as Mary Agnes Deveau; but she was known as Agnes.



(Spamer 1009)



(Spamer 1004)

Odina Martel (1904–2000) [No. 103]. *(Top)* Undated studio portrait. *(Bottom)* Odina and Agnes Deveau Martel, wedding portrait, 24 September 1929; by Cunningham, Lowell, Massachusetts.



(Spamer 1259)



(Spamer 363)



(Spamer 1737)

(**Top**) Odina and Agnes Martel with children (not identified), possibly in 1939; location not known but presumably on their farm. (**Bottom left**) Carol Spamer (holding a cat) and her grandaunt Agnes Martel, at the Martel home, Dover, New Hampshire, 1956. (**Bottom right**) Circa 1980: Palmina Martel Kears (*looking from door*) and her sister-in-law, Agnes Martel (*standing, front left*); Olia Martel Roman (*behind Agnes*); Sandra Martel (*center, wife of Donald Martel*); Ola Martel Plante (*seated at right*); woman in front not identified at this time. Photo at the home of Palmina's daughter, Jeannette Spamer, 637 Hunter St., Gloucester City, New Jersey.



(Spamer 791)



Home of Odina and Agnes Martel,
Deerfield, New Hampshire.

(*Top*) View in 1956. Figures in front yard are (*left to right*) Agnes Martel, Carol Spamer (kneeling with dog), Earle Spamer (with lawnmower); figures in side yard undetermined. [It was here in 1956 that Earle Spamer for the only time met his great-grandfather, Joseph Martel, who then resided with his son, Odina.]

(*Center and bottom*) Photos of the former Martel home taken by Sharon Martel Latture, 2006.



(Spamer 653)

Arnold Martel (ca. 1931–) [No. 139]
(Date and location not known)



(Spamer795)

Donald Martel (ca. 1933–) [No. 140]
(1956)



(Spamer 1141)

Olia E. Martel (1936–) [No. 141]
(December 1951)



(Spamer 239)

Ola Martel (1937–) [No. 142]
(Leslie Studio, Manchester, New Hampshire, 1955)

Genealogy of the Martel and Blouin Families of French Canada and New England

Occupations of Agnes Deveau Martel (from U.S. censuses):

1920: Buttoner in knitting mill

1930: Machine operator in knitting mill

Regarding the family of Agnes (Deveau) Martel, only her parents and siblings are known at this time, as follows:

Edmund Deveau was born about 1873 in Canada. He married **Margaret** about 1895. She was born about 1873 in Canada.

Children of Edmund Deveau and Margaret are:

- i. Mary J.² Deveau, born about 1899 in Massachusetts.
- ii. Catherine A. Deveau, born about 1902 in Massachusetts.
- iii. Agnes J. Deveau, born about 1903 in Massachusetts.
- iv. Margaret E. Deveau, born about 1911 in Massachusetts.
- v. Rhita Deveau, born about 1914 in Massachusetts.

NOTES

Edmund Deveau (ca. 1873–) and his wife, Margaret Deveau, immigrated into the U.S. about 1895; both became a naturalized citizens in 1904.

At the time of the 1920 U.S. census, Edmund Deveau was a grain handler in a grain company; he resided at 9 Maple St., Wakefield, Middlesex Co., Massachusetts.

At the time of the 1930 census, Margaret Deveau resided at 36 Columbia Road, Wakefield, Middlesex Co., Massachusetts; she was a married head of household.

At the time of the 1920 census, Mary J. Deveau (ca. 1899–) was a cutter in a knitting mill.

At the time of the 1920 census, Catherine A. Deveau (ca. 1902–) was a ribboner in a knitting mill.

At the time of the 1920 census, Margaret E. Deveau (ca. 1911–) was a knitter in a knitting mill.

139. Arnold Martel (ca. 1931–)

As of 1999, Arnold Martel resided at 47 Magna Vista Circle, Tewksbury, Massachusetts.

140. Donald Martel (ca. 1933–)

As of 2007, Doanld Martel resided at 8050 Eagle Drive, Brooksville, Florida.

104. Laura Teresa¹² Martel (Joseph I.¹¹, Isaïe¹⁰, Godfroi⁹, Jacques⁸, Joseph⁷, Jacques⁶, Paul⁵, Paul⁴, Honoré³ Martel dit Lamontagne, Jean², Jean¹ Martel) was born 14 December 1905 in Massachusetts, and died 11 April 1993 in Hillsborough, Florida. She married **Napoleon Simeon Chretien**. He was born 13 September 1902 in Canada, and died 06 January 1988 in Lawrence, Essex, Massachusetts.

Child of Laura Martel and Napoleon Chretien is:

- + 143 i. Roland¹³ Chretien, born about 1928 in Massachusetts; died 05 April 2005 in Plant City, Florida.

Laura (Martel) Chretien (1905–1993) [No. 104]



(Spamer1007)

Laura Martel; studio portrait, date and location not known.



(Spamer1262)

Napoleon “Joe” and Laura Chretien, posing with rustic folk art that may have been created by her brother-in-law, Eugene Boucher. Photo probably in 1939; location not known.

NOTES

Napoleon Simeon Chretien (1902–1988), husband of Laura Martel [No. 104], was known as Joseph Chretien and “Joe”. He emigrated from Canada to the U.S. in 1928. At the time of the 1930 U.S. census, he was a farmer with an address of R.F.D., Haggets Pond Road, Andover, Essex Co., Massachusetts. The death notice for Joseph I. Martel (in 1962) notes that Laura (and Napoleon) Chretien resided in Andover.

Joseph and Laura (Martel) Chretien (1905–1993) [No. 104] resided in Lawrence, Essex Co., Massachusetts. The Social Security Death Index for Laura Chretien lists her last residence in Lawrence; the Florida death index lists her residence as Hillsborough.

105. Olia¹² Martel (Joseph I.¹¹, Isaïe¹⁰, Godfroi⁹, Jacques⁸, Joseph⁷, Jacques⁶, Paul⁵, Paul⁴, Honoré³ Martel dit Lamontagne, Jean², Jean¹ Martel) was born 28 July 1908, and died 22 December 2000 in Salem, Massachusetts. She married **Leo J. Myskowski**, son of Jan Myskowski and Olympia. He was born 22 August 1906 in Lowell, Massachusetts, and died 08 July 1989 in Stoneham, Massachusetts.

Child of Olia Martel and Leo Myskowski is:
+ 144 i. Edward M.¹³ Myskowski.

NOTES

Olia (Martel) Myskowski (1908–2000) [No. 105] is buried at Holy Trinity Cemetery, Lowell, Massachusetts.

Leo Myskowski (1906–1989), husband of Olia Martel [No. 105], was a mechanical engineer. His residence during 1946–1989 was at 28 Myopia Rd., Stoneham, Massachusetts. He is buried in Holy Trinity Cemetery, Lowell, Massachusetts. His obituary notice reads: ¹⁶

Leo J. Myskowski, a retired engineer, died yesterday at his home in Stoneham. He was 82. Mr. Myskowski graduated from Lowell High School in 1924, and from the Massachusetts Institute of Technology in 1928 with a degree in mechanical engineering. He worked for Jackson and Moreland Co., an electrical utilities engineering firm in Boston, from 1936 to 1971, eventually becoming the firm’s vice president in the late 1950s. He retired in 1965. Born in Lowell, he moved to Stoneham in 1946. Mr. Myskowski leaves his wife, Olia (Martel) of Stoneham; a son, Edward of Salem; two sisters, Wanda Kozłowski of Webster and Vera Blair of Ohio; and two grandchildren. Graveside services will be held at 1 pm, Tuesday in Trinity Cemetery, Lowell.

Regarding the family of Leo Myskowski, only his parents and siblings are known at this time, as follows:

Jan Myskowski was born about 1878 in Poland, and died in Massachusetts. He married **Olympia**. She was born about 1879 in Poland, and died in Massachusetts.

Children of Jan Myskowski and Olympia are:

- i. Fannie Myskowski, born about 1903 in Poland.
- ii. Stanley Myskowski, born about 1905 in Poland.
- iii. Leo Myskowski, born 22 August 1906 in Lowell, Massachusetts; died 08 July 1989 in

¹⁶ Blind copy of obituary notice received from family.

Olia (Martel) Myskowski (1908–2000) [No. 105]



(Left) Olia Martel. Studio portrait, date and location not known.

(Spamer1006)



(Right) Leo and Olia Myskowski, wedding portrait; Ouellette Studio, 158 Merrimack St., Lowell, Massachusetts.

(Spamer1001)



(Spamer1332)



(Spamer 1201)

(Top left) Leo and Olia Myskowski at the races. (Top right) Leo and Olia Myskowski with baby Edward; apparently at the Martel family home, Tewksbury, Massachusetts.



(Spamer214)



(Spamer 1002)

(Bottom left) Leo and Olia Myskowski in Gloucester City, New Jersey, 6 December 1977. (Bottom right) Studio portrait, ca. 1980.

Genealogy of the Martel and Blouin Families of French Canada and New England

- iv. Stoneham, Massachusetts.
- iv. Veronica Myskowski, born about 1909 in Massachusetts.
- v. Stephanie Myskowski, born about 1911 in Massachusetts.
- vi. Helen Myskowski, born about 1915 in Massachusetts.
- vii. Walter Myskowski, born about July 1917 in Massachusetts.
- viii. Vera Myskowski, born after 1920. She married Blair.
- ix. Wanda Myskowski, born after 1920. She married Kozlowski.

NOTES

At the time of the 1920 U.S. census, Jan Myskowski (ca. 1878–) was an “Operative” in a cotton mill; he resided a 5-57 Lakeview Ave., Lowell, Middlesex Co., Massachusetts.

At the time of the 1920 census, Olympia Myskowski (ca. 1879–), wife of Jan Myskowski, was an “Operative” in a cotton mill.

At the time of the 1920 census, Fannie Myskowski (ca. 1903–) was an “Operative” in a hosiery mill.

107. Eva Beatrice¹² Martel (Joseph I.¹¹, Isaïe¹⁰, Godfroi⁹, Jacques⁸, Joseph⁷, Jacques⁶, Paul⁵, Paul⁴, Honoré³ Martel dit Lamontagne, Jean², Jean¹ Martel) was born 04 April 1912 in Massachusetts, and died 12 December 1994 in Lowell, Massachusetts. She married **Frederick E. Wilkins** 31 March 1934, son of Ralph Wilkins and Helen. He was born 13 September 1913 in Massachusetts, and died July 1970.

Child of Eva Martel and Frederick Wilkins is:

- 145 i. Ralph¹³ Wilkins. He married Charlotte.

NOTES

The Lowell, Massachusetts, Marriage Intentions for 1934 lists Frederick Wilkins and Eva Martel on 31 March 1934.

At the time of the 1930 census, Frederick E. Wilkins (1913–1970) was employed in the shipping department of a thread mill; he resided in Lawrence, Massachusetts.

Regarding the family of Frederick Wilkins, only his parents and siblings are known at this time, as follows:

Ralph A.¹ Wilkins was born 25 January 1888 in Massachusetts, and died January 1968. He married **Helen M.** She was born about 1895 in New Hampshire.

Children of Ralph Wilkins and Helen are:

- i. Mildred R.² Wilkins, born about 1911 in Massachusetts.
- ii. Frederick E. Wilkins, born 13 September 1913 in Massachusetts; died July 1970.
- iii. Ralph B. Wilkins, born 24 May 1915 in Massachusetts; died 31 October 1996.
- iv. Louise I. Wilkins, born about 1919 in Massachusetts.

NOTES

At the time of the 1930 U.S. census, Ralph Wilkins (1888–1968) was an ice man; he resided at 12 Gage Ave., Lowell, Middlesex Co., Massachusetts.

At the time of the 1930 census, Mildred R. Wilkins (ca. 1911–) worked in the shipping department of a thread mill.

[Also see Additions & Corrections](#)



(Left) **Eva Martel Wilkins** (1912–1994) [No. 107] and her husband, **Frederick E. Wilkins** (1913–1970). Probably in 1939 at her parents' home.

(Spamer 1251)



(Left) Eva Martel Wilkins (right) with her son, **Ralph** [No. 145] and his wife, **Charlotte**. Probably in 1978 at the younger Wilkins' home.

(Spamer 1145)

114. Jeanette¹² Roberge (Exilia¹¹ Martel, Isaïe¹⁰, Godfroi⁹, Jacques⁸, Joseph⁷, Jacques⁶, Paul⁵, Paul⁴, Honoré³ Martel dit Lamontagne, Jean², Jean¹ Martel) was born 13 July 1916 in Dover, New Hampshire, and died 11 January 2004 in Riverside Rest Home, Dover, New Hampshire. She married **Harmond Grenier**. He died 1969.

Children of Jeanette Roberge and Harmond Grenier are:

- 146 i. Suzanne¹³ Grenier.
- 147 ii. Leo Paul Grenier.

NOTES

Jeanette (Roberge) Grenier (1916–2004) [No. 114] was a stitcher at Miller Shoe, Tierra Shoe, and Weiss-Lawrence Shoe; she resided on Niles St. in Dover, New Hampshire. She is buried in St. Charles Cemetery, Dover, New Hampshire.

119. Wilfred Joseph¹² Martel, Jr. (Wilfred Joseph¹¹, Isaïe¹⁰, Godfroi⁹, Jacques⁸, Joseph⁷, Jacques⁶, Paul⁵, Paul⁴, Honoré³ Martel dit Lamontagne, Jean², Jean¹ Martel) was born 01 November 1922 in Dover, New Hampshire, and died 22 September 1993 in Somersworth, New Hampshire. He married **Elizabeth Grace Nantais** 11 June 1944 in Cranston, Rhode Island. She was born 16 November 1924 in Cranston, Rhode Island.

Children of Wilfred Martel and Elizabeth Nantais are:

- 148 i. Jean Helen¹³ Martel, born 15 August 1946 in Dover, New Hampshire.
- 149 ii. Beatrice Ann Martel, born 27 July 1947 in Dover, New Hampshire.
- 150 iii. Carolyn Louise Martel, born 19 January 1949 in Dover, New Hampshire.
- 151 iv. Wayne Bruce Martel, born 28 December 1949 in Dover, New Hampshire.
- 152 v. David Charles Martel, born 13 October 1957 in Dover, New Hampshire.

NOTES

Wilfred Joseph Martel, Jr. (1922–1993) [No. 119] served in the U.S. Navy during World War II; rank EM3. He is buried in Dover, New Hampshire.

120. Raymond Joseph¹² Martel (Wilfred Joseph¹¹, Isaïe¹⁰, Godfroi⁹, Jacques⁸, Joseph⁷, Jacques⁶, Paul⁵, Paul⁴, Honoré³ Martel dit Lamontagne, Jean², Jean¹ Martel) was born 01 June 1924 in Dover, New Hampshire. He married **Audrey Mae Cote** 27 April 1946 in Dover, New Hampshire. She was born 05 May 1927 in Detroit, Michigan.

Children of Raymond Martel and Audrey Cote are:

- 153 i. Raymond John¹³ Martel, born 05 July 1947 in Dover, New Hampshire.
- 154 ii. Audrey Anne Martel, born 29 August 1949 in Dover, New Hampshire.
- 155 iii. Patricia Theresa Martel, born 15 February 1955 in Dover, New Hampshire. She married Michael McBride.

NOTES

Raymond Joseph Martel (1924–) [No. 120] served in the U.S. Army.

122. Pauline Theresa¹² Martel (Wilfred Joseph¹¹, Isaïe¹⁰, Godfroi⁹, Jacques⁸, Joseph⁷, Jacques⁶, Paul⁵, Paul⁴, Honoré³ Martel dit Lamontagne, Jean², Jean¹ Martel) was born 06 October 1926 in Dover, New Hampshire. She married **Ernest Girard Lemieux** 10 September 1954 in Dover, New Hampshire. He was born 15 February 1927 in Exeter, New Hampshire.

Children of Pauline Martel and Ernest Lemieux are:

- 156 i. Paul Gerard¹³ Lemieux, born 03 July 1955 in Dover, New Hampshire.
 - 157 ii. Anita Louise Lemieux, born 27 October 1957 in Dover, New Hampshire.
 - 158 iii. Roger Ernest Lemieux, born 18 September 1958 in Dover, New Hampshire.
 - 159 iv. Michelle Pauline Lemieux, born 27 October 1961 in Dover, New Hampshire.
-

123. Paul John¹² Martel (Wilfred Joseph¹¹, Isaïe¹⁰, Godfroi⁹, Jacques⁸, Joseph⁷, Jacques⁶, Paul⁵, Paul⁴, Honoré³ Martel dit Lamontagne, Jean², Jean¹ Martel) was born 10 April 1928 in Dover, New Hampshire. He married **Katharine Julia Hughes** 12 June 1954 in Dover, New Hampshire. She was born 23 June 1931 in Dover, New Hampshire.

Children of Paul Martel and Katharine Hughes are:

- 160 i. Paul John¹³ Martel, Jr., born 01 September 1955 in Dover, New Hampshire.
- 161 ii. Peter Leo Martel, born 03 August 1957 in Dover, New Hampshire.
- 162 iii. Lynda Joan Martel, born 31 March 1960 in Dover, New Hampshire.
- 163 iv. Christine Elizabeth Martel, born 22 January 1968 in Dover, New Hampshire.

NOTES

Paul John Martel (1928–) [No. 123] served in the U.S. Army. He founded a local business, Martel Plumbing and Heating, Inc.

125. Rita Jeanne¹² Martel (Wilfred Joseph¹¹, Isaïe¹⁰, Godfroi⁹, Jacques⁸, Joseph⁷, Jacques⁶, Paul⁵, Paul⁴, Honoré³ Martel dit Lamontagne, Jean², Jean¹ Martel) was born 14 September 1931 in Dover, New Hampshire. She married **John Andrew Chase** 06 May 1950 in Dover, New Hampshire. He was born 25 March 1926 in Nottingham, New Hampshire, and died 19 May 1980 in Dover, New Hampshire.

Children of Rita Martel and John Chase are:

- 164 i. Allan Richard¹³ Chase, born 07 December 1950 in Dover, New Hampshire; died 28 September 1991.
- 165 ii. Brian Chase, born 21 December 1952 in Dover, New Hampshire.
- 166 iii. Brenda Jeanne Chase, born 08 September 1957 in Dover, New Hampshire.
- 167 iv. Kevin John Chase, born 27 January 1962 in Dover, New Hampshire.

NOTES

John Andrew Chase (1926–1980), husband of Rita Martel [No. 125], is buried in Dover, New Hampshire.

126. Robert Joseph¹² Martel (Wilfred Joseph¹¹, Isaïe¹⁰, Godfroi⁹, Jacques⁸, Joseph⁷, Jacques⁶, Paul⁵, Paul⁴, Honoré³ Martel dit Lamontagne, Jean², Jean¹ Martel) was born 13 December 1932 in Dover, New Hampshire. He married **(1) Ruth Ethlyn Brown** 03 September 1951 in Dover, New Hampshire, daughter of George Brown and Dorothy Mooney. She was born 18 June 1931 in Dover, New Hampshire. He married **(2) Roberta Eileen Williams Alvis** 1961 in Dover, New Hampshire. She was born in Tucson, Arizona. He married **(3) Yvonne Rose Gauthier Henderson** 16 March 1964 in Rochester, New Hampshire. She was born 01 May 1940 in Wolfeboro, New Hampshire.

Children of Robert Martel and Ruth Brown are:

- + 168 i. Sharon Elaine¹³ Martel, born 17 January 1952 in Dover, New Hampshire.
- + 169 ii. Marlene Theresa Martel, born 25 September 1953 in Dover, New Hampshire.

Child of Robert Martel and Roberta Alvis is:

- 170 i. Edward¹³ Alvis, Adopted child.

Children of Robert Martel and Yvonne Henderson are:

- + 171 i. Cindy Mae¹³ Martel, born 13 October 1959 in Rochester, New Hampshire; Adopted child.
- + 172 ii. Sandra Lee Martel, born 15 March 1961 in Rochester, New Hampshire; Adopted child.
- + 173 iii. Deborah Jean Martel, born 13 March 1962 in Sanford, Maine; Adopted child.
- + 174 iv. Penny Lee Martel, born 24 August 1964 in Rochester, New Hampshire.
- + 175 v. Rodney Joseph Martel, born 18 December 1965 in Rochester, New Hampshire.

NOTES

Robert Joseph Martel (1932–) [No. 126] is a builder and master electrician.

Yvonne (Henderson) Martel is known as “Birdie”.

Edward Alvis [No. 170] was adopted by Dual Alvis, Tucson, Arizona.

127. Emile Joseph¹² Martel (Wilfred Joseph¹¹, Isaïe¹⁰, Godfroi⁹, Jacques⁸, Joseph⁷, Jacques⁶, Paul⁵, Paul⁴, Honoré³ Martel dit Lamontagne, Jean², Jean¹ Martel) was born 05 March 1935 in Dover, New Hampshire. He married **Ruth Pauline Burdell** 06 February 1954 in Dover, New Hampshire. She was born 21 March 1935 in Dover, New Hampshire.

Children of Emile Martel and Ruth Burdell are:

- + 176 i. Dana Paul¹³ Martel, born 27 March 1954 in Dover, New Hampshire.
- + 177 ii. Diane Theresa Martel, born 08 March 1956 in Dover, New Hampshire.
- 178 iii. Susan Marie Martel, born 10 November 1958 in Dover, New Hampshire.
- 179 iv. Sheila Jeanne Martel, born 15 December 1960 in Dover, New Hampshire.
- 180 v. Russell John Martel, born 01 June 1966 in Dover, New Hampshire.
- 181 vi. Paula Jeanne Martel, born 15 July 1973 in Dover, New Hampshire.

NOTES

Emile Joseph Martel (1935–) [No. 127] (“Dick”) founded a local business, Emile “Dick” Martel Building Contractors.

Ruth (Burdell) Martel, wife of Emile Joseph Martel, is known as “Snookie”.

128. Richard Francis¹² Martel (Wilfred Joseph¹¹, Isaïe¹⁰, Godfroi⁹, Jacques⁸, Joseph⁷, Jacques⁶, Paul⁵, Paul⁴, Honoré³ Martel dit Lamontagne, Jean², Jean¹ Martel) was born 02 November 1938 in Dover, New Hampshire. He married (1) **Doris Nancy Griffin** in Dover, New Hampshire. He married (2) **Susan Katherine Penny** 01 December 1984 in Dover, New Hampshire. She was born 24 September 1941 in West Lebanon, New Hampshire.

Child of Richard Martel and Doris Griffin is:

- 182 i. Valerie Jeanne¹³ Martel, born 27 July 1969 in Dover, New Hampshire.

NOTES

Richard Francis Martel (1938–) [No. 128] served in the U.S. Army.

129. Bertrand Joseph¹² Martel (Wilfred Joseph¹¹, Isaïe¹⁰, Godfroi⁹, Jacques⁸, Joseph⁷, Jacques⁶, Paul⁵, Paul⁴, Honoré³ Martel dit Lamontagne, Jean², Jean¹ Martel) was born 12 October 1942 in Dover, New Hampshire. He married (1) **Linda Mae Lampros** April 1964 in Dover, New Hampshire. She was born April 1945 in Dover, New Hampshire. He married (2) **Louise Ellinore Huntress Mackey** 23 November 1991 in Somersworth, New Hampshire. She was born 28 September 1946 in Saco, Maine.

Children of Bertrand Martel and Linda Lampros are:

- 183 i. Bruce Joseph¹³ Martel, born 02 December 1964 in Dover, New Hampshire.
184 ii. Douglas Joseph Martel, born 26 April 1966 in Dover, New Hampshire.

NOTES

Bertrand Joseph Martel (1942–) [No. 129] served in the U.S. Army.

Generation No. 13

138. Jeannette Leda¹³ Blouin (Palmina Marie¹² Martel, Joseph I.¹¹, Isaïe¹⁰, Godfroi⁹, Jacques⁸, Joseph⁷, Jacques⁶, Paul⁵, Paul⁴, Honoré³ Martel dit Lamontagne, Jean², Jean¹ Martel) was born 12 August 1920 in Lowell, Middlesex Co., Massachusetts, and died 01 November 1987 in Underwood Memorial Hospital, Woodbury Co., Gloucester, New Jersey. She married **Edward Lawrence Spamer** 15 March 1942 in Philadelphia, Pennsylvania, son of John Spamer and Lora Smith. He was born 25 December 1909 in 1234 N. 54th St., Philadelphia, Pennsylvania, and died 10 November 1955 in “Hospital of the University of Pennsylvania”, Philadelphia, Pennsylvania.

See Section B for Blouin lineage.

See Part I: Spamer Family, for Spamer lineage.

Children of Jeannette Blouin and Edward Spamer are:

- 185 i. John Edward¹⁴ Spamer, born 22 January 1943 in Millville Hospital, Millville, Cumberland Co., New Jersey; died 23 January 1943 in Millville Hospital, Millville, Cumberland Co., New Jersey.
 - 186 ii. Carol Ann Spamer, born 04 July 1946 in Hahnemann Hospital, Philadelphia, Pennsylvania.
 - 187 iii. Earle Edward Spamer, born 28 July 1952 in Hahnemann Hospital, Philadelphia, Pennsylvania. He married (1) Donna J. Alvin 06 December 1977 in Church of God, Gloucester City, Camden Co., New Jersey; born 31 March 1954 in Cooper Hospital, Camden, Camden Co., New Jersey. He married (2) Jane Lou Anderson 11 February 2005 at The Franklin Institute, Philadelphia, Pennsylvania; born 17 December 1958 in New Philadelphia, Tuscarawas Co., Ohio.
-

141. Olia E.¹³ Martel (Odina¹², Joseph I.¹¹, Isaïe¹⁰, Godfroi⁹, Jacques⁸, Joseph⁷, Jacques⁶, Paul⁵, Paul⁴, Honoré³ Martel dit Lamontagne, Jean², Jean¹ Martel) was born about February 1936. She married **Donald Roman**.

Children of Olia Martel and Donald Roman are:

- 188 i. Janet¹⁴ Roman, born 1959.
- 189 ii. James Roman, born about 1961.
- 190 iii. Joseph Roman, born about 1962.
- 191 iv. John Roman, born 1963.
- 192 v. Dale Roman, born December 1968.

NOTES

Donald Roman, husband of Olia E. Martel [No. 141], is known as “Don”.

James Roman (ca. 1961–) [No. 189] is known as “Jim”.

Joseph Roman (ca. 1962–) [No. 190] is known as “Joe”.

John Roman (ca. 1963–) [No. 191] is known as “Jack”.

143. Roland¹³ Chretien (Laura Teresa¹² Martel, Joseph I.¹¹, Isaïe¹⁰, Godfroi⁹, Jacques⁸, Joseph⁷, Jacques⁶, Paul⁵, Paul⁴, Honoré³ Martel dit Lamontagne, Jean², Jean¹ Martel) was born about 1928 in Massachusetts, and died 05 April 2005 in Plant City, Florida. He married **Erna** in Deggendorf, Germany.

Roland Chretien (ca. 1928–2005) [No. 143]



(Spamer 328)



(Spamer 1003)

(Left) Roland Chretien (*left*) and his cousin, Jeannette Blouin, in 1931; location not known.

(Right) Roland Chretien, studio portrait, Lowell Photo Studio, 712 Merrimack St., Lowell, Massachusetts.

Genealogy of the Martel and Blouin Families of French Canada and New England

Child of Roland Chretien and Erna is:

- 193 i. Roland¹⁴ Chretien. He married Linda Plante.

NOTES

Roland Chretien (senior) (ca. 1928–2005) [No. 143] died in an automobile accident.

144. Edward M.¹³ Myskowski (Olia¹² Martel, Joseph I.¹¹, Isaïe¹⁰, Godfroi⁹, Jacques⁸, Joseph⁷, Jacques⁶, Paul⁵, Paul⁴, Honoré³ Martel dit Lamontagne, Jean², Jean¹ Martel). He married **(1) Regina**. He married **(2) Paulina D. Alexander**. She was born in Cuba.

Children of Edward Myskowski and Regina are:

- 194 i. Jan Patrick¹⁴ Myskowski.
+ 195 ii. Sandra Myskowski, born 24 September 1968 in Medford, Massachusetts.

NOTES

144. Edward M. Myskowski

He received a B.S. in chemical engineering from the Massachusetts Institute of Technology, 1962, and an M.S. in geology from Boston University.

Edward Myskowski and Paulina Alexander reside in Salem, Massachusetts.

Paulina Alexander

(wife of Edward M. Myskowski)

Paulina Alexander had a brother who was held for years as a political prisoner during the Castro regime in Cuba. She uses her maiden name.

194. Jan Patrick Myskowski

He graduated from the Massachusetts College of Liberal Arts, 1987, and William and Mary College School of Law, 1992. In 2002, he was an associate attorney with Waters and Bass, P.A., Cleveland, Ohio.

168. Sharon Elaine¹³ Martel (Robert Joseph¹², Wilfred Joseph¹¹, Isaïe¹⁰, Godfroi⁹, Jacques⁸, Joseph⁷, Jacques⁶, Paul⁵, Paul⁴, Honoré³ Martel dit Lamontagne, Jean², Jean¹ Martel) was born 17 January 1952 in Dover, New Hampshire. She married **Robert Keith Latture** 05 December 1969 in Dover, New Hampshire. He was born 23 November 1952 in Lowell, Massachusetts.

Children of Sharon Martel and Robert Latture are:

- + 196 i. Robert Keith¹⁴ Latture, Jr., born 18 January 1970 in Derry, New Hampshire.
+ 197 ii. Stephanie Diane Latture, born 07 September 1972 in Kittery, Maine.

(Right) **Edward M. Myskowski** [No. 144],
Massachusetts Institute of Technology, Class of
1962 yearbook photo.



(Below) Ed Myskowski (right) and his second
wife, Paulina Alexander, with Earle Spamer (left);
at the Myskowski home in Salem, Massachusetts,
2006.

(Spamer 652)



(Spamer photo)

Genealogy of the Martel and Blouin Families of French Canada and New England

- 198 iii. Timothy Michael Latture, born 15 January 1978 in Oxford, England.

NOTES

Robert Keith Latture (1952–), husband of Sharon Martel [No. 168], served in the U.S. Air Force, 1971-1991, attaining the rank of Master Sergeant.

169. Marlene Theresa¹³ Martel (Robert Joseph¹², Wilfred Joseph¹¹, Isaïe¹⁰, Godfroi⁹, Jacques⁸, Joseph⁷, Jacques⁶, Paul⁵, Paul⁴, Honoré³ Martel dit Lamontagne, Jean², Jean¹ Martel) was born 25 September 1953 in Dover, New Hampshire. She married (1) **Donald Lynch**. She married (2) **Bradford Cole** 1991 in Portsmouth, New Hampshire. She married (3) **Eddie Blaine Reynolds** October 1999 in Roanoke, Virginia. He was born 23 June 1955 in Washington, D.C.

Child of Marlene Martel and Donald Lynch is:

- 199 i. Alyssa Ashley¹⁴ Lynch, born 13 January 1982 in Dover, New Hampshire.
-

171. Cindy Mae¹³ Martel (Robert Joseph¹², Wilfred Joseph¹¹, Isaïe¹⁰, Godfroi⁹, Jacques⁸, Joseph⁷, Jacques⁶, Paul⁵, Paul⁴, Honoré³ Martel dit Lamontagne, Jean², Jean¹ Martel) was born 13 October 1959 in Rochester, New Hampshire. She married **Kevin Dean Albertson**. He was born 31 March 1959 in Rhinebeck, New York.

Children of Cindy Martel and Kevin Albertson are:

- 200 i. Joshua Ryan¹⁴ Albertson, born 08 March 1984 in Wuerzburg, Germany.
201 ii. Jessica Lynn Albertson, born 05 August 1986 in Honolulu, Hawaii.

NOTES

Cindy Mae Martel (1959–) [No. 171] was adopted in 1970. She served in the U.S. Army.

Kevin Dean Albertson (1959–), husband of Cindy Martel, served in the U.S. Army.

172. Sandra Lee¹³ Martel (Robert Joseph¹², Wilfred Joseph¹¹, Isaïe¹⁰, Godfroi⁹, Jacques⁸, Joseph⁷, Jacques⁶, Paul⁵, Paul⁴, Honoré³ Martel dit Lamontagne, Jean², Jean¹ Martel) was born 15 March 1961 in Rochester, New Hampshire. She married **Joseph Roger Gagnon** in Dover, New Hampshire. He was born 22 October 1959 in Dover, New Hampshire.

Children of Sandra Martel and Joseph Gagnon are:

- 202 i. Rebecca Lynn¹⁴ Gagnon, born 03 April 1986 in Exeter, New Hampshire.
203 ii. Justin Robert Gagnon, born 05 November 1990 in Dover, New Hampshire.

NOTES

Sandra Lee Martel (1961–) [No. 172] was adopted in 1970.

173. Deborah Jean¹³ Martel (Robert Joseph¹², Wilfred Joseph¹¹, Isaïe¹⁰, Godfroi⁹, Jacques⁸, Joseph⁷, Jacques⁶, Paul⁵, Paul⁴, Honoré³ Martel dit Lamontagne, Jean², Jean¹ Martel) was born 13 March 1962 in Sanford, Maine. She married **Michael William Cormier**. He was born 23 June 1959 in Lynn, Massachusetts.

Children of Deborah Martel and Michael Cormier are:

- 204 i. Jonathan Michael¹⁴ Cormier, born 11 March 1982 in Dover, New Hampshire.
- 205 ii. Christopher James Cormier, born 10 October 1984 in Melrose, Massachusetts.
- 206 iii. Sarah Jean Cormier, born 26 May 1988 in Sanford, Maine.

NOTES

Deborah Jean Martel (1962–) [No. 173] was adopted in 1970. She and Michael Cormier were divorced.

174. Penny Lee¹³ Martel (Robert Joseph¹², Wilfred Joseph¹¹, Isaïe¹⁰, Godfroi⁹, Jacques⁸, Joseph⁷, Jacques⁶, Paul⁵, Paul⁴, Honoré³ Martel dit Lamontagne, Jean², Jean¹ Martel) was born 24 August 1964 in Rochester, New Hampshire. She married (1) **Scott Simpson**. She married (2) **Steven Poligni** 24 December 1995 in Dover, New Hampshire. He was born 27 December 1960 in Exeter, New Hampshire.

Child of Penny Martel and Scott Simpson is:

- 207 i. Samantha Lee¹⁴ Simpson, born 30 October 1989 in Dover, New Hampshire.

NOTES

Penny (Martel) Poligni (1964–) [No. 174] and her husband, Steven Poligni (1960–) were divorced.

175. Rodney Joseph¹³ Martel (Robert Joseph¹², Wilfred Joseph¹¹, Isaïe¹⁰, Godfroi⁹, Jacques⁸, Joseph⁷, Jacques⁶, Paul⁵, Paul⁴, Honoré³ Martel dit Lamontagne, Jean², Jean¹ Martel) was born 18 December 1965 in Rochester, New Hampshire. He married **Bertha**.

Children of Rodney Martel and Bertha are:

- 208 i. Travis Dean¹⁴ Martel, born 09 March 1986 in Dover, New Hampshire.
 - 209 ii. Amber Rose Martel, born 29 November 1987 in Dover, New Hampshire.
-

176. Dana Paul¹³ Martel (Emile Joseph¹², Wilfred Joseph¹¹, Isaïe¹⁰, Godfroi⁹, Jacques⁸, Joseph⁷, Jacques⁶, Paul⁵, Paul⁴, Honoré³ Martel dit Lamontagne, Jean², Jean¹ Martel) was born 27 March 1954 in Dover, New Hampshire. He married **Celeste Mone**.

Children of Dana Martel and Celeste Mone are:

- 210 i. Anthony¹⁴ Martel.
 - 211 ii. Jamie Martel.
-

177. Diane Theresa¹³ Martel (Emile Joseph¹², Wilfred Joseph¹¹, Isaïe¹⁰, Godfroi⁹, Jacques⁸, Joseph⁷, Jacques⁶, Paul⁵, Paul⁴, Honoré³ Martel dit Lamontagne, Jean², Jean¹ Martel) was born 08 March 1956 in Dover, New Hampshire. She married **Paul LaPete**.

Child of Diane Martel and Paul LaPete is:

- 212 i. Derek¹⁴ LaPete.
-

Generation No. 14

195. Sandra¹⁴ Myskowski (Edward M.¹³, Olia¹² Martel, Joseph I.¹¹, Isaïe¹⁰, Godfroi⁹, Jacques⁸, Joseph⁷, Jacques⁶, Paul⁵, Paul⁴, Honoré³ Martel dit Lamontagne, Jean², Jean¹ Martel) was born 24 September 1968 in Medford, Massachusetts. She married **Vincent Gino Campo** 21 October 1995 in Tewksbury, Massachusetts, son of Eugenio Campo and Josephine Celata. He was born 24 January 1960 in Revere, Massachusetts.

Children of Sandra Myskowski and Vincent Campo are:

- 213 i. Maria Elizabeth¹⁵ Campo, born 12 October 1996 in Lowell, Massachusetts.
214 ii. Mark Anthony Campo, born 04 February 1999 in Lowell, Massachusetts.

[Also see Additions & Corrections](#)

NOTES

Vincent Gino Campo (1960–), husband of Sandra Myskowski [No. 195], earned a B.S. degree in biology from Clarke University, 1983. His father, Eugenio Antonio Campo, was known as Anthony Campo.

196. Robert Keith¹⁴ Latture, Jr. (Sharon Elaine¹³ Martel, Robert Joseph¹², Wilfred Joseph¹¹, Isaïe¹⁰, Godfroi⁹, Jacques⁸, Joseph⁷, Jacques⁶, Paul⁵, Paul⁴, Honoré³ Martel dit Lamontagne, Jean², Jean¹ Martel) was born 18 January 1970 in Derry, New Hampshire. He met **(1) Tammy St. Denis**. He met **(2) Kimberlee Kedmenec**.

Child of Robert Latture and Tammy St. Denis is:

- 215 i. Cameron Michael¹⁵ St. Denis, born 30 January 1992 in Plattsburgh, New York.

Child of Robert Latture and Kimberlee Kedmenec is:

- 216 i. Kaytlyn Marie¹⁵ Kedmenec, born 02 February 2000 in Plattsburgh, New York.
-

197. Stephanie Diane¹⁴ Latture (Sharon Elaine¹³ Martel, Robert Joseph¹², Wilfred Joseph¹¹, Isaïe¹⁰, Godfroi⁹, Jacques⁸, Joseph⁷, Jacques⁶, Paul⁵, Paul⁴, Honoré³ Martel dit Lamontagne, Jean², Jean¹ Martel) was born 07 September 1972 in Kittery, Maine. She met **(1) Jimmy Bidwell**. She met **(2) Timothy Enos**. She married **(3) Paul Matthew Warren** May 1999 in Aurora, Colorado. He was born 05 January 1970 in England. She married **(4) Larry Alan Fredericks** 14 September 1999 in Westminster, Colorado. He was born 10 August 1973 in Orange, California.

Genealogy of the Martel and Blouin Families of French Canada and New England

Child of Stephanie Latture and Jimmy Bidwell is:

- 217 i. Devyn Kyle¹⁵ Shaffer, born 09 November 1995 in Denver, Colorado.

Child of Stephanie Latture and Timothy Enos is:

- 218 i. Abigail Marie¹⁵ Enos, born 02 September 1998 in Aurora, Colorado.

Child of Stephanie Latture and Paul Warren is:

- 219 i. Jennifer Ashley¹⁵ Warren, born 03 November 1990 in RAF Lakenheath, Lakenheath, England.

Child of Stephanie Latture and Larry Fredericks is:

- 220 i. Joshua Michael¹⁵ Fredericks, born 03 May 2000 in Aurora, Colorado.
-



Section B

[Also see Additions & Corrections](#)

Descendants of François Xavier Blouin (1812/13–1886)¹⁷

(25 descendants)

Generation No. 1

1. François Xavier¹ Blouin was born between December 1812–January 1813, and died 06 November 1886. He married **Marguerite Mercier**. She died before November 1886.

Children of François Blouin and Marguerite Mercier are:

- + 2 i. Augustin² Blouin, born about 1855, from St-Gervais, Bellechasse Co., dio. Québec; died after 1917 in Canada.
- 3 ii. Napoléon Blouin, died before 1917. He married Marguerite Goupil 22 October 1872 in St-Lazare, Québec.

NOTES

François Xavier Blouin (1812/13–1886) [No. 1] was buried on 9 November 1886 in St-Gervais, Bellechasse Co., dio. Québec.

Generation No. 2

[Also see Additions & Corrections](#)

2. Augustin² Blouin (François Xavier¹) was born about 1855, from St-Gervais, Bellechasse Co., dio. Québec, and died after 1917 in Canada. He married **(1) Céline Boutin** 17 April 1877 in St-Anselme, Dorchester Co. (now Bellechasse Co.), dio. Québec, daughter of Thomas Audet and Marie. She was born about 1856 in Québec, Canada, and died before 1917 in Canada. He married **(2) Marguerite Goupil** 19 February 1917 in St-Anselme, Bellechasse Co., dio. Québec.

Children of Augustin Blouin and Céline Boutin are:

- 4 i. Marie Céline³ Blouin, born 11 February 1878; died 14 July 1878.
- 5 ii. Marie Florida Blouin, born 17 May 1879.
- 6 iii. Joseph Augustin Blouin, born 15 June 1880.

¹⁷ Data for the first two generations of Blouins were provided by André Martel of Montréal, based on records searches made by him in Québec. Some of the principals were confirmed in a telephone conversation with Roland Chretien (ca. 1928-2005) [see No. 143 in Section A, Martel Family].

Genealogy of the Martel and Blouin Families of French Canada and New England

- 7 iv. Marie Almanda Blouin, born 23 August 1881.
- 8 v. Marie Emma Blouin, born 10 December 1882.
- 9 vi. Marie Elise Olivine Blouin, born 12 July 1884.
- 10 vii. Joseph Omer Gaudiose Blouin, born 22 November 1885.
- 11 viii. Marie Audivine Mathilde Blouin, born 19 February 1887.
- 12 ix. Marie Alfreda Laudia Blouin, born 05 March 1888.
- 13 x. Marie Elise Blouin, born 07 September 1889; died 20 September 1889.
- 14 xi. François Xavier Blouin, born 22 November 1890; died December 1969. He married Marie Blanche Turmel.
- 15 xii. Joseph Fortunat Blouin, born 14 July 1892.
- 16 xiii. Marie Eva Bernadette Blouin, born 15 November 1893.
- 17 xiv. Joseph Napoléon Henri Blouin, born 19 April 1895; died 06 August 1895.
- + 18 xv. Joseph Armand Arthur Blouin, born 15 May 1896 in St-Anselme, Bellechasse Co., dio. Québec; died 17 July 1930 in Lowell Corporation Hospital, Lowell, Massachusetts.
- 19 xvi. Blouin, born 26 February 1897; died 26 February 1897.
- 20 xvii. Joseph Léon Louis Wilfrid Blouin, born 17 February 1898; died 13 May 1898.
- 21 xviii. Marie Ange Yvonne Blouin, born 16 February 1899; died 10 September 1903.

NOTES

2. Augustin Blouin (ca. 1855–after 1917)
and his wife Céline (Boutin) Blouin (ca. 1856–before 1917)

At the time of the 1881 Canadian census, Augustin Blouin was a farmer.

Augustin and Céline Blouin were apparently residing in the U.S. when their 18th child, Marie Ange Yvonne Blouin, died on 10 September 1903. They may have returned to Québec.

Children of Augustin and Céline Blouin

Marie Céline Blouin (1878–1878) [No. 4] was baptized on 12 February 1878 in St-Gervais, Bellechasse Co., dio Québec. She was known as “Céline”. She is buried in St-Gervais.

Marie Florida Blouin (1879–) [No. 5] was baptized on 18 May 1879 in St-Gervais, Bellechasse Co., dio Québec. She was known as “Florida”. She may have emigrated to Lowell, Massachusetts, and married as Deslauriers (as noted in the 1930 U.S. census).

At the time of the 1881 Canadian census, Joseph Augustin Blouin (1880–) [No. 6] is listed as 11 months of age, born in May.

Marie Almanda Blouin (1881–) [No. 7] was baptized 23 August 1881 in St-Gervais, Bellechasse Co., dio Québec.

Joseph Omer Gaudiose Blouin (1885–) [No. 10] was baptized 23 November 1885 in St-Gervais, Bellechasse Co., dio Québec.

Marie Elise Blouin (1889–1889) [No. 13] was baptized 21 September 1889 in St-Gervais, Bellechasse Co., dio Québec.

François Xavier Blouin (1890–1969) [No. 14] was buried 28 December 1969 in St-Gervais, Bellechasse Co., dio Québec.

Joseph Napoléon Henri Blouin (1895–1895) [No. 17] was buried on 7 August 1895 in St-Gervais, Bellechasse Co., dio Québec.

The unnamed baby Blouin (1897–1897) [No. 19] was buried 27 February 1897 in St-Anselme, Bellechasse Co., dio Québec.

Joseph Léon Louis Wilfrid Blouin (1898–1898) [No. 20] was buried 14 May 1898 in St-Anselme, Bellechasse Co., dio Québec.

Marie Ange Yvonne Blouin (1899–1903) [No. 21] was buried 12 September 1903 in St-Anselme, Bellechasse Co., dio Québec.

Generation No. 3

18. Joseph Armand Arthur³ Blouin [**Arthur Blouin**] (Augustin², François Xavier¹) was born 15 May 1896 in St-Anselme, Bellechasse Co., dio. Québec, and died 17 July 1930 in Lowell Corporation Hospital, Lowell, Middlesex Co., Massachusetts. He married **Palmina Marie Martel** 31 August 1919 in Lowell, Middlesex Co., Massachusetts, daughter of Joseph Martel and Joséphine Arnold. She was born 26 February 1901 in Dover, New Hampshire, and died 07 February 1987 in a nursing home in Sewell, New Jersey.

Child of Joseph Blouin [Arthur Blouin] and Palmina Martel is:

- + 22 i. Jeannette Leda⁴ Blouin, born 12 August 1920 at 21 Hancock Ave., Lowell, Middlesex Co., Massachusetts; died 01 November 1987 at Underwood Memorial Hospital, Woodbury, Gloucester Co., New Jersey.

NOTES

18. Joseph Armand Arthur Blouin (Arthur Blouin) (1896–1930)

Arthur Blouin was baptized 15 May 1896 in St-Anselme, Bellechasse Co., dio. Québec. He emigrated from Canada to the U.S. in 1915. He apparently made his first (and only) American residence in Lowell, Massachusetts, as his death certificate (1930) indicates that he had resided in the community for 14 years.

The 1920 U.S. census indicates that Arthur Blouin was then a carpenter at a cotton mill; but the Lowell city directories list him first as a carpenter, and later as a millwright. His death certificate in 1930 indicates that he had been a machinist for the Gillette Carbonizing Plant for 12 years. This attribution of his employer may have been confused by the fact that his wife at that time worked as a mail sorter in the Gillette plant.

He died at the Lowell Corporation Hospital, which originally was founded in 1839 for the employees of the textile mills.¹⁸ The cause of death on Arthur Blouin's death certificate is given as chronic mastoiditis,

¹⁸ The hospital remained in the control of the Corporation until 1 Nov 1930, when the deed was transferred to the Archdiocese of Boston and the hospital was renamed St. Joseph's Hospital, under which name it operated until 1992

[note cont'd →

Genealogy of the Martel and Blouin Families of French Canada and New England

from which he had suffered since 1 April 1930, complicated by prevalent meningitis since 15 July 1930. His death certificate indicates he was buried in Westlawn Cemetery, Lowell, where he is in fact. Later family records indicate he is buried in the adjacent Edson Cemetery, an error, although the two cemeteries are adjacent and both are administered by the Lowell Department of Cemeteries. Funeral arrangements were made by the Saunders Funeral Home, 90 Westford St., Lowell.

At the time of his death, Arthur Blouin was a member of the Lowell lodge of the Loyal Order of Moose.

Residences and occupations for Arthur Blouin (from U.S. censuses and Lowell city directories):

1918 city directory: "operative rms", 228 Central St.

1919 city directory: "opr rms", 228 Central St.

1920 city directory: [Not listed; residing with in-laws according to U.S. census]¹⁹

1920 census: Wollaston St., Lowell, Middlesex Co., Massachusetts (with his in-laws)

1920 (Aug): 7 rear 21 Hancock Ave.

1921 city directory: Carpenter, 7 rear 21 Hancock Ave.

1922 city directory: [Not listed]

1923 city directory: Millwright, 11 Mill St.

1924 city directory: Millwright, 39 Wetherbee Ave.

[1925 city directory not seen]

1926-1930 city directories: Millwright, 45 Wetherbee Ave.

[Also see Additions & Corrections](#)

1930 census: 45 Wetherbee Ave., Lowell, Middlesex Co., Massachusetts

1931 city directory: "Blouin Arthur (Palmina) died July 17, 1930" and "Blouin Pauline M. widow Arthur res 249 Westford"

Arthur Blouin was buried 19 July 1930 in Westlawn Cemetery, Lowell, Massachusetts (lot 102, section 5, near intersection of cemetery's F and Swan Aves.).

See *Section A, Martel Family*, for notes about **Palmina (Martel) Blouin**.

Generation No. 4

22. Jeannette Leda⁴ Blouin (Joseph Armand Arthur³, Augustin², François Xavier¹) was born 12 August 1920 in Lowell, Massachusetts, and died 01 November 1987 in Underwood Memorial Hospital, Woodbury, Gloucester Co., New Jersey. She married **Edward Lawrence Spamer** 15 March 1942 in Philadelphia, Pennsylvania, son of John Spamer and Lora Smith. He was born 25 December 1909 at 1234 N. 54th St., Philadelphia, Pennsylvania, and died 10 November 1955 at "Hospital of the University of Pennsylvania", Philadelphia, Pennsylvania.

when it merged with St. John's Hospital to become the Saints Memorial Medical Center. The sale to the Archdiocese came after several years of attempts by the Corporation to interest the Franco-American Oblates, who had been petitioning the Archdiocese for a local hospital. (>>"Lowell Corporation Hospital/Saint Joseph's Hospital", University of Massachusetts at Lowell website, <http://www.ecommunity.uml.edu/francolowellma/stjosephshospital.htm>; accessed 22 Sep 2006. Saints Medical Center website, <http://www.saints-memorial.org>; accessed 22 Sep 2006.)

¹⁹ The birth record of Jeannette Leda Blouin, born 12 Aug 1920, indicates that she was born at 21 Hancock Ave., thus Arthur and Palmina Blouin were residing there at that time. Arthur's occupation as listed on the certificate is "Carpenter".

Genealogy of the Martel and Blouin Families of French Canada and New England

Children of Jeannette Blouin and Edward Spamer are:

- 23 i. John Edward⁵ Spamer, born 22 January 1943 at Millville Hospital, Millville, Cumberland Co., New Jersey; died 23 January 1943 at Millville Hospital, Millville, Cumberland Co., New Jersey.
- 24 ii. Carol Ann Spamer, born 04 July 1946 at Hahnemann Hospital, Philadelphia, Pennsylvania.
- 25 iii. Earle Edward Spamer, born 28 July 1952 at Hahnemann Hospital, Philadelphia, Pennsylvania. He married (1) Donna J. Alvin 06 December 1977 at Church of God, Gloucester City, Camden Co., New Jersey; born 31 March 1954 at Cooper Hospital, Camden, Camden Co., New Jersey. He married (2) Jane Lou Anderson 11 February 2005 at The Franklin Institute, Philadelphia, Pennsylvania; born 17 December 1958 in New Philadelphia, Tuscarawas Co., Ohio.

NOTES

The address at which Jeannette Blouin was born was a mill workers' tenement. As noted in the Lowell city directory, the Blouins then resided at "7 rear 21 Hancock Ave."

See *Part I: Spamer Family*, for all Spamer lineages and for information about Jeannette (Blouin) Spamer.





(Spamer 714)

(Left)
Joseph Armand Arthur Blouin (Arthur Blouin)
 (1896–1930). Studio portrait; date unknown.



(Right) Arthur and Palmina Martel Blouin;
 wedding portrait, 31 August 1919, Lowell,
 Massachusetts.

(Spamer 237)



(Spamer 1017)

(Above) Arthur and Palmina Blouin standing beside a house with a foundation date of 1915; location unknown.

(Right) Arthur astride a motorcycle with his wife, Palmina, in the sidecar. The motorcycle has a Massachusetts license plate with the date 1919.



(Spamer 1019)



(Spamer 314)



(Spamer 784)

(Above) Family group photo including Martel and Blouin individuals. The baby in front is Jeannette Blouin, thus the photo was taken in 1921. *Rear, left to right:* Odina Martel, Lena Martel Boucher, Eugene Boucher, Arthur Blouin (Palmina Martel Blouin in white in front of him), unknown man, Joseph Martel (Josephine Martel in front of him). Eva Martel may be the child sitting *second from left*. Others not identified.

(Left) The young girl in front center is Jeannette Blouin. The only other subjects that have been identified are Odina Martel and Arthur Blouin (*grasping each other at left*). It is possible that this is the Blouin family; the older man and woman *at right, rear*, might be Arthur's father and stepmother, Augustin and Marguerite Blouin. The elder woman *at rear center* appears in other photos with Arthur, but her identity is not now known. (Corroboration of identity of Odina Martel made by Sharon Martel Latture, March 2006.)



(Spamer 1138)

Arthur Blouin built a house at 45 Wetherbee Ave. in Lowell, Massachusetts. (*Above*) Arthur stands on the foundation, *at right*; the man standing atop the barrel is his father-in-law, Joseph Martel. These views were taken in 1924.



(Spamer 1418)



The house at 45 Wetherbee Ave. as seen in 2006. (*Spamer photos*)



(Spamer 1026)



(Spamer 322)

(Above, left) Arthur and Palmina Blouin with new-born Jeannette, late Summer 1920.

(Above, right) Jeannette Blouin carrying a chamberpot.

(Below, left) Jeannette Blouin and her grandfather, Joseph Martel. The occasion must have been special, as Joseph was rarely photographed well dressed.

(Below, right) Arthur and Palmina Blouin with Jeannette.



(Spamer717)



(Spamer 316)



(Spamer 1085)

(Above) Jeannette Blouin rides on a field rake harnesssed to a horse. The man atop the haystack is probably her grandfather, Joseph Martel. (In another photo, this haystack is shown to be on a truck.)

(Below, left) Jeannette Blouin (right) and her cousin, Roland Chretien, in 1931.

(Below, right) Jeannette Blouin, probably in a classroom photograph taken in Lowell, Massachusetts.



(Spamer 328)



(Spamer 1075)

(*Right*) Leo and Palmina Sylvester (*to right*) pose with Jeannette Blouin (*left*). This photo, without date or location, could be taken in the mid-1930s in New York City, when Leo and Palmina resided there in a basement of a rooming house. Jeannette did not reside with them, but was living with aunts and uncles in her hometown of Lowell, Massachusetts.



(Spamer 1091)



(Spamer 1475)

(*Left*) Jeannette Blouin; date and location unknown, ca. 1940.

For photos of Jeannette Blouin after her marriage to Edward Spamer
see in **Part I: Spamer Family**

Genealogy and Historical Notes of Spamer and Smith Families of Maryland

NEW EDITION

Appendix 1. The Martel and Blouin Families of Québec and New England

Martel and Blouin emigrants to Québec from France, 1664–1665
Blouin and Martel emigrants to U.S. from Canada, ca. 1900

Additions & Corrections *to* JUNE 2011

Additions and Corrections

Hyperlinks embedded in the main genealogy will, when clicked in the computer's web-browser environment, redirect the user automatically to the pertinent additions, emendations and corrections that are compiled in this "Additions and Corrections" section.

Additions apply newly found information to particular parts of the main genealogy. Emendations rewrite parts of original texts. Factual errors and errors that may misconstrue meanings are corrected. Inconsequential typographical errors are not corrected.

All additions, emendations, and corrections are in order by page numbers to which they apply in the main text.

The pagination of the "Additions and Corrections" section begins with Roman numeral "i". Footnotes within this section continue the enumeration from the last number used in the main genealogy.

Bear in mind that the pagination and the enumeration of footnotes within the "Additions and Corrections" section will change from revision to revision as new material is continually added here. The content, pagination, and footnote numbers of the main part of the original genealogy do not change.

If the "Additions and Corrections" section is printed out to accompany a printed version of the main genealogy, these pages may be kept either as a separate document or they may be interleaved where appropriate within the main text of the genealogy.

‡ Signifies NEW individuals to this genealogy, whose enumeration numbers are assigned in this "Additions and Corrections" section.

INTRODUCTION

Page 5

Addition

Late in 2010 I came into contact with Clermont Blouin, who is working on a Blouin genealogy. At that time he provided me with a direct-line ancestry of the Blouins in our family here; and as like the Martels, the Blouins trace their American origins to one immigrant, Mery Mederic Blouin (or Bellouin dit Laviollette), who arrived in Canada in 1664 and here married Marie Carreau on 30 November 1669.

Section A
Descendants of Jean Martel (ca. 1587–)

Pages 9–58

Page 18A [*illustration page facing page 19*]

Correction

For page number 18A **read** page number 18G

90. Joseph Isaïe Martel (1876–1962)

Page 19

Addition

In September 1922 two properties on Wetherbee Ave., Lowell, were transferred from Fred W. Wood to, respectively, Joseph Martel and Arthur Blouin (*The Lowell Sun*, 16 Sep 1922, p. 20).

As noted in Section B of this Appendix (page 62), Arthur Blouin (Joseph's son-in-law) is listed in the 1924 Lowell city directory as residing at 39 Wetherbee Ave., and in the 1926-1930 directories at 45 Wetherbee Ave. Illustrations shown in this genealogy on page 63D show the house at 45 Wetherbee Ave. under construction in 1924; one of these photos includes both Joseph Martel and Arthur Blouin in the view. It is the house at 45 Wetherbee Ave. that Arthur's daughter, Jeannette Blouin Spamer, recalled as that one built by her grandfather.

Although corroborative information is lacking at this time, one may assume that the property at 39 Wetherbee Ave. may have been that property conveyed by Fred Wood to Joseph Martel. It might have been the first property to be improved with the construction of a house, and where Arthur Blouin and family may have resided with Joseph and Josephine Martel. In 1924, the property at 45 Wetherbee Ave. then was improved, which became Arthur Blouin's home. Later, Joseph Martel removed to Tewksbury, where he became a farmer. Although the circumstances of the residences of the mid-1920s just described are conjectural (other than the real estate transfers and the addresses known for Arthur Blouin), they seem to be reasonable assumptions, given the additional evidence conveyed in family photographs and personal recollection.

Addition

The obituary for Joseph Martel in *The Lowell Sun* (26 Jul 1962, p. 3) includes the following information:

Joseph J. [sic] Martel, husband of the late Josephine M. (Arnold) Martel of South road, Deerfield, N. H., and formerly of Tewksbury, died unexpectedly Tuesday evening at the Mitchell Memorial Hospital in Brentwood, N. H. Before moving to Deerfield six years ago, he had been a resident of Tewksbury for over 25 years, having lived on East street. Until his retirement in 1942, he had been employed as a foreman by the U. S. Mailing Case Co. of Lowell, and after his retirement he was a produce farmer in Tewksbury.

Joséphine (Arnold) Martel (1877–1948)

Page 20

Addition

The obituary and funeral notices for Josephine Martel in *The Lowell Sun* (17 Mar 1948, p. 3, 19 Mar 1948, p. 3) include the following information:

Mrs. Josephine M. (Arnold) Martel, died at her home, East street, Tewksbury, yesterday after a long illness. She was born in St. Edwards, Canada, April 20, 1877, the daughter of firman and Dormitilda Arnold. She resided in Lowell for 35 years and lived in Tewksbury for the past 16 years. She would have celebrated her golden wedding anniversary with her husband in three months.

Funeral services for Mrs. Josephine Martel of East street were held yesterday afternoon at 2.30 o'clock at the Farmer and Son funeral home, Lee street. Rev. Hugo Bourdeau, pastor of the Tewksbury Congregational church, officiated.

The bearers were Napoleon Chretien, Leo Myskowski, Frederick Wilkins, Arnold Martel, Roland Chretien and Eugene Boucher.

Burial was in Westlawn cemetery, Lowell, where Rev. Mr. Bourdeau conducted the committal service. Arrangements were in charge of Funderal Director H. L. Farmer and Son.

102. Lena (Martel) Boucher (1902–1990)Addition and Correction

Eugene C. Boucher (1898–1999)
(husband of Lena Martel)

A typewritten U.S. immigration record for Eugene Boucher's parents, Napoleon and Aurore Boucher, is noted at the St. Albans, Vermont, border station in 1923 (no specific date indicated). Eugene is supposed to have immigrated in 1919, although as already noted in this genealogy the 1930 U.S. census indicates that he had immigrated in 1923. In any case, Eugene did not immigrate with his parents. No pertinent immigration record has thus far been located for Eugene Boucher in any year.

The following information further emends the present genealogical entry:

In the immigration record cited above, Napoleon Boucher's "calling or occupation" is listed as "sawmill". His latest residence was in Canada, although apparently the town is listed as "NA" (confused partly by the entry from the line above, which cites a partly illegible address in New Hampshire, and about which more is noted below). The name and given for Napoleon's nearest relative in country of origin is "bro[ther] Alphonse [Boucher]", residing on Elgin Road. Napoleon and those traveling with him were enroute to Lowell, Massachusetts. Accompanying him were:

Aurore Blier Boucher, whose nearest relative in country of origin is listed only as "bro. law"
Paul Eddy Boucher, aged 5 years, 6 months, whose nearest relative in country of origin is listed only as "uncle"
Jeanette Boucher, aged [20 or 30], occupation domestic; no additional information
Blanche Boucher, aged 16; no additional information

Note that Aurore's maiden name is in this record spelled *Blier*, whereas in the present genealogy it is given as *Blie* based on information provided from another source. Either spelling may be correct.

Paul Eddy Boucher is likely to be the boy, Edward Boucher, previously noted in this genealogy as having immigrated with his parents in 1923, who is identified farther below as Edward Paul Boucher. (Note that in many French Canadian families of Catholic denomination given and baptismal names often are interchanged.)

Of note in the immigration record is the person listed immediately prior to Napoleon Boucher: Leon Beaulieu, aged 19, occupation mill hand, from Nashua, New Hampshire, enroute to Nashua. Beaulieu is the maiden name of Lena Martel's step-grandmother, the second wife of Isaïe Martel [No. 87]. This may be a coincidental name, but it is mentioned here as a possible family connection and that this Leon Beaulieu may have accompanied Napoleon and Aurore Boucher on their immigration into the U.S.

Addition

Regarding Edward P. Boucher, the following information is here related:

Edward Paul Boucher was in March 1943 engaged to be married to Geraldine Jane Murphy, of Lowell, Massachusetts. Their engagement was noticed in *The Lowell Sun* as part of a dual engagement of the sisters Murphy, Geraldine and Helen Louise Murphy ("Murphy Sisters Engaged", *The Lowell Sun*, 3 Mar 1943):

LOWELL—Mrs. Alyce C. Murphy of 1107 Middlesex street has announced the engagement of two of her daughters, Geraldine Jane and Helen Louise. Miss Geraldine has become engaged to Edward Paul Boucher, son of Mrs. Aurore Boucher of Wamesit.

She attended Lowell high, Lowell Commercial college and is employed at the works engineers department of the Lowell Ordnance plant.²⁰

Mr. Boucher attended Lynn English high, Bradshaw Business school and McGill university in Montreal. He is employed by a local concern.

The wedding will take place in June.

Miss Helen Murphy has become engaged to Frank B. Sykes, son of Mr. and Mrs. Richard Sykes of 1286 Lawrence street. She attended Lowell high school where she was an adjutant in the Girls Regiment. She also attended Bradshaw Business school and is employed in the mail department at the Lowell Ordnance plant. Mr. Sykes attended Lowell high and Lowell Evening Textile school. He is employed by the Lowell Ordnance plant. Their wedding is planned for early in September.



(From The Lowell Sun, 3 Mar 1943)

Regarding the Murphy family, the following collateral lineage has been determined from U.S. census records:

Richard Murphy was born November 1867 in Ireland. He married **Eliza Jennie** about 1892. She was born February 1871 in Ireland.

Children of Richard Murphy and Jennie are:

- + i. Parker F. Murphy, born November 1893 in Rhode Island.
- ii. Joseph R. Murphy, born September 1896 in Rhode Island.
- iii. Agnes F. Murphy, born June 1899 in Rhode Island.
- iv. Ellen J. Murphy, born about 1901 in Massachusetts.

NOTES

Richard Murphy and Eliza Jennie Murphy, wife of Richard Murphy, both immigrated into the U.S. in 1889 (according to the 1900 U.S. census); or he immigrated in 1889 and she in 1891 (according to the 1910 census). By the time of the 1900 census, Richard Murphy was a naturalized U.S. citizen.

Residences of Richard Murphy (from U.S. censuses):
1900: Lincoln, Providence Co., Rhode Island

²⁰ According to Wikipedia online, "The Lowell Ordnance Plant was a small arms plant operated under contract from the Remington Arms Company between 1942 and 1943. The only ordnance it produced was for caliber 50 guns." [No further information given there.]

1910: 1089 Gorham St., Lowell, Middlesex Co., Massachusetts

Occupations of Richard Murphy (from U.S. censuses):

1900: Day laborer
1910: Packer in bleachery

At the time of the 1900 census, the Richard Murphy household included his mother, Nellie Murphy, widow, born June 1846 in Ireland. She then indicated that she had had ten children, five of whom were then living.

In the 1910 census, Murphy is misindexed as “Murphey”, but is spelled “Murphy” on the census sheet.

Eliza J. Murphy was known as “Jennie”.

Generation 2

Parker F. Murphy was born November 1893 in Rhode Island. He married **Alyce**. She was born about 1897 in England.

Children of Parker Murphy and Alyce are:

- + i. Hazel Murphy, born about June 1917 in Massachusetts.
- ii. Helen Louise Murphy, born about February 1920 in Massachusetts. She married Frank B. Sykes 1943 [see below]
- iii. Geraldine Jane Murphy, born about 1923 in Massachusetts. She married Edward Paul Boucher 1943 [see main genealogy, above]

NOTES

Residences of Parker F. Murphy (from U.S. censuses):

1920: 53 London St., Lowell, Middlesex Co., Massachusetts
1930: 74 Commonwealth Ave., Lowell, Middlesex Co., Massachusetts

Occupations of Parker F. Murphy (from U.S. censuses and other sources):

1920 census: Machinist, U.S. Cartridge Co.
1930 census: Machine shop foreman
1943 newspaper notice: Lowell Ordnance plant

End of Murphy collateral lineage

Regarding the Sykes family, the following collateral lineage has been determined from U.S. census records:

Richard Sykes was born May 1859 in England. He married **Elizabeth A.** about 1885. She was born July 1867 in England.

Children of Richard Sykes and Elizabeth are:

- i. Gertrude Sykes, born February 1887 in England.
- ii. Edith Sykes, born October 1888 in England.
- iii. George J. Sykes, born August 1890 in England.
- + iv. Richard O. Sykes, born May 1894 in Massachusetts.
- v. William W. Sykes, born June 1896 in Massachusetts.

NOTES

Residences of Richard Sykes (from U.S. censuses):

1900: Tewksbury, Middlesex Co., Massachusetts
1910: 11 Rockingham St., Lowell, Middlesex Co., Massachusetts
1930: 17½ Rockingham St., Lowell, Middlesex Co., Massachusetts

Occupations of Richard Sykes (from U.S. censuses):

1900: Carder in bunting mill

1910: Carder in woolen mill
1930: no occupation

Richard and Elizabeth Sykes, with their English-born children, immigrated into the U.S. in 1890. At the time of the 1900 U.S. census, Richard Sykes was a naturalized U.S. citizen.

At the time of the 1910 U.S. census, Edith Sykes was employed by the electrical utility [specific occupation is illegible on the census sheet].

At the time of the 1910 census, George H. Sykes was employed as a machinist in a bleaching mill.

Generation 2

Richard O. Sykes was born May 1894 in Massachusetts. He married **Catherine**. She was born about 1893 in Massachusetts.

Children of Richard Sykes and Catherine are:

- i. Richard O. Sykes, Jr., born about March 1918 in Massachusetts.
- ii. Frank B. Sykes, born about October 1919 in Massachusetts. He married Helen Louise Murphy 1943 [see above]
- iii. Isabel L. Sykes, born about 1921 in Massachusetts.
- iv. Thomas W. Sykes, born about 1925 in Massachusetts.
- v. Henry G. Sykes, born about April 1927 in Massachusetts.

NOTES

Residences of Richard O. Sykes (from U.S. censuses):

1920: Wright St., Chelmsford, Middlesex Co., Massachusetts
1930: 9 Rockingham St., Lowell, Middlesex Co., Massachusetts

Occupations of Richard O. Sykes (from U.S. censuses):

1920: Foreman in worsted mill
1930: Carder in cotton mill

The parents of Catherine Sykes, wife of Richard O. Sykes, were born in Scotland.

End of Sykes collateral lineage

98. Wilfred Joseph Martel (1897–1968)

Page 23

Emendation

For He married **Pauline L. Labrie** 1921 . . .

Read He married **Pauline L. Labrie** 18 July 1921 in Dover, New Hampshire . . .

Addition

Two days after Wilfred and Pauline Labrie were married they were hosted at the home of his brother, Joseph Martel, in Lowell, Massachusetts. The following news item appeared in the newspaper there (*The Lowell Sun*, 21 Jul 1921, p. 30):

RECEPTION TO VISITORS

Mr. and Mrs. Wilfrid Martel, who were married Monday at Dover, N. H., are the guests of Mr. and Mrs. Joseph Martel of Wetherbee avenue. Last-evening the couple were tendered a reception at the home of their hosts and there was a large gathering present to extent [*sic*] their congratulations and best wishes. Luncheon was served and an entertainment program was given, those participating being Miss Lena Martel, Mrs. Blouin, M. Blanchette and Mrs. Arnold Morin.

“Mrs. Blouin” was Palmina Martel Blouin. She and her sister, Lena, were nieces of Wilfred.

[Sylvester Family collateral genealogy]

Page 40

Correction

For Salene(?) St. **read** Salem St.

107. Eva Beatrice Martel (1968–)

[Wilkins Family collateral lineage]

Page 47

Addition

Ralph B. Wilkins (1915–1996), brother-in-law of Eva Martel Wilkins, married. He had a son, Frederick A. Wilkins, who in March 1963 became engaged to Dorothy J. Boyle, daughter of Thomas F. Boyle, Jr., of 33 West Fifth Ave., Lowell, Massachusetts. Their marriage was to take place 4 May 1963 in St. Rita's Church. At this time, Ralph B. Wilkins resided at 12 Lawson St., Lowell. A photograph of Dorothy Boyle appeared in the newspaper notice. (*Lowell Sun*, 3 Mar 1963, p. 25)

At this time no further information is had relating to Ralph B. Wilkins and his family.

195. Sandra Myskowski (1968–)

Page 56

Addition

‡ 214a iii. Lauren Campo, born about 2003.

Section B
Descendants of François Xavier Blouin (1812/13–1886)

Pages 59–63

Addition**Descendants of Mery Mederic Blouin / Bellouin dit Laviollette (fl. 1669)**

Late in 2010 I came into contact with Clermont Blouin, who is working on a Blouin genealogy. At that time he provided me with a direct-line ancestry of the Blouins in our family here; and as like the Martels, the Blouins trace their American origins to one immigrant, Mery Mederic Blouin (or Bellouin dit Laviollette), who arrived in Canada in 1664 and here married Marie Carreau on 30 November 1669.

Rather than emend the entire genealogy to reflect this straight-line lineage, below is that lineage to the sixth generation descendant, François Xavier Blouin (1812/13–1886), who begins the current genealogy of Appendix 1. Should one wish to account for the entire range of generations, add five (5) to each of the generations represented herein.

1. **Mery Mederic Blouin** (or **Bellouin dit Laviollette**) (fl. 1669)
married Marie Carreau, 30 November 1669
2. **Jacques Blouin**
married **Genevieve Plante**, 2 September 1715
3. **Jacques Blouin**
married **Marie-Catherine Gosselin**, 14 January 1745
4. **Charles Blouin**
married **Marie-Charlotte Thivierge**, 27 October 1783
5. **Jacques Blouin**
married **Marie-Anne Delage**, 23 November 1812
6. **François Xavier Blouin** (1812/13–1886)
continued in the present genealogy as *Generation No. 1*

2. Augustin Blouin (1855–1931)

Page 59

Correction

For

2. Augustin² Blouin (François Xavier¹) was born about 1855, from St-Gervais, Bellechasse Co., dio. Québec, and died after 1917 in Canada.

Read

2. Augustin² Blouin (François Xavier¹) was born 08 May 1855 in Anselme, Québec, and died 7 March 1931 in Anselme, Québec.

Revised information received from Clermont Blouin, 4 December 2010.

Addition

[This is an older addition; later corroborated when Augustin's dates were determined. The identity of the man in the photo is, however, still uncorroborated.]

If the man shown in the photograph at the bottom of page 63C (photo *Spamer 784*) is in fact Augustin Blouin, as here postulated, the apparent age of his granddaughter, Jeannette Leda Blouin, who is also shown in the photograph at about six years of age, helps corroborate that Augustin was still alive ca. 1926.

18. Joseph Armand Arthur Blouin (1896–1930)

Page 62

Addition

In September 1922 two properties on Wetherbee Ave., Lowell, were transferred from Fred W. Wood to, respectively, Joseph Martel and Arthur Blouin (*The Lowell Sun*, 16 Sep 1922, p. 20).

As noted, Arthur Blouin (Joseph's son-in-law) is listed in the 1924 Lowell city directory as residing at 39 Wetherbee Ave., and in the 1926-1930 directories at 45 Wetherbee Ave. Illustrations shown in this genealogy on page 63D show the house at 45 Wetherbee Ave. under construction in 1924; one of these photos includes both Joseph Martel and Arthur Blouin in the view. It is the house at 45 Wetherbee Ave. that Arthur's daughter, Jeannette Blouin Spamer, recalled as that one built by her grandfather.

Although corroborative information is lacking at this time, one may assume that the property at 39 Wetherbee Ave. may have been that property conveyed by Fred Wood to Joseph Martel. It might have been the first property to be improved with the construction of a house, and where Arthur Blouin and family may have resided with Joseph and Josephine Martel. In 1924, the property at 45 Wetherbee Ave. then was improved, which became Arthur Blouin's home. Later, Joseph Martel removed to Tewksbury, where he became a farmer. Although the circumstances of the residences of the mid-1920s just described are conjectural (other than the real estate transfers and the addresses known for Arthur Blouin), they seem to be reasonable assumptions, given the additional evidence conveyed in family photographs and personal recollection.