

# THE GRAND CANON

## INTRODUCTION *and* BIBLIOGRAPHY

### THIS IS A HYBRID DIGITAL DOCUMENT IN BOOK LAYOUT

**DIGITAL USERS:** The entire text of this PDF document is searchable; use your program's "FIND" command. Hyperlinks also appear throughout. To view it in book format with opposing pages, use the appropriate viewing mode with the cover page separate so that odd-numbered text pages appear on the right. A wide screen is essential for convenient two-page viewing. An opposing-page display is, however, not mandatory for the use of this volume.

**NON-INTERACTIVE USERS:** The **CONTENTS** pages (pp. XI-XIII) list the physical page numbers for the entire volume. Major units are separately paginated. A page-numbered **table of contents** for the **bibliography only** appears at the beginning of the bibliography (which begins following INTRODUCTION PAGE 568).

#### HYPERLINKS

##### THIS PDF DOCUMENT CONTAINS HYPERLINKS

IF USING THE HYPERLINKS BELOW AND ELSEWHERE,  
POSITION CURSOR AND ACTIVATE

- 👉 Note to New Users ENGLISH
- 👉 Nota a los Nuevos Usuarios ESPAÑOL
- 👉 Map of Geographical Coverage
- 👉 Title and Publisher's Pages

👉 **CONTENTS FOR ENTIRE VOLUME**

👉 **SEPARATE CONTENTS PAGE FOR  
THE BIBLIOGRAPHY ONLY**

THE ENTIRE VOLUME, AS WELL AS SEPARATE PARTS OF IT, MAY BE DOWNLOADED FROM

<https://ravensperch.org>

# THE GRAND CANON

## NOTE TO NEW USERS

DIGITAL USERS will find hyperlinks throughout this searchable PDF-formatted volume; it is otherwise formatted to appear like a conventional book, with a layout friendly to readers and usable in non-digital ways. The [Contents](#) page is your first guide; it appears after the title-page farther below. The geographical area of coverage is shown in the [Frontispiece](#) illustrations (following this note to the user). Read as necessary the [Executive Overview](#), the [Preamble](#), or the one-page [Abstract](#), with which one may also promote THE GRAND CANON.

Other than the bibliography itself, so much is presented in this volume for several reasons. This is meant to serve for a long time and answer questions, particularly when I am no longer able to do so. Users may want explanations for why the material is here, how it was assembled, what it can do for them, and how they might want to move ahead with more ambitious projects. I take advantage of four decades of experience I have had working with researchers in museums and libraries, learning from their needs and expectations, all this during the transition from “analog” to “digital” methods and resources. Editorially inclined users may object to some repetitive information in the Introduction. I counter with the observation that many users who have either grown into or grown up with digitally accessed resources will proceed into this one in the selective, hyperlinked fashion to which they are accustomed, perhaps never noticing the remainder as easily as they would have with a hardcopy product.

**I.** The very lengthy [Introduction to Content and Coverage](#) explains the history, components, and organization of the bibliography. See the [Volume Contents](#) for details. It also provides informative [surveys and commentaries](#) on bibliography and on where THE GRAND CANON stands with respect to other resources that have been compiled for the Grand Canyon–lower Colorado River region and other regions. Historical and geographical perspectives of the region are provided. Also offered is an argument in support of the continued use of bibliographies in the digital age, and the service this one can provide in revitalized ways long into the future, an inspiration for new projects and partnerships.

**II.** The [Bibliography](#) itself is of course the core of THE GRAND CANON. Its layout is expressly friendly to readers, breaking from taxing, monotonous formats often associated with bibliographies. It has its own [Contents](#) pages. Its 106,000 citations record the chunks and bits of published history for everything in the great regions along the lower Colorado River, from Glen Canyon Dam to the sea. Incluso si la bibliografía queda desactualizada por el cese de nuevas citas, the thousands of accounts and isolated facts it cites still stand in single citations and in intertwining hundreds—in 114 languages from sources around the world published during 487 years, ca. 1535–2021. The publications that these citations record embrace human activities and accomplishments in the thousand ways that people, organizations, and governments have thought to observe and record them, and about which opinions are given. This is a definitive source—a **canon**. It can be extracted from, and further, it can serve as a foundation for greatly embellished or refined resources.

THE GRAND CANON is now a series of three volumes: Volume 1 is the *Introduction and Bibliography*; Volume 2 is the *Cartobibliography of the Grand Canyon and Lower Colorado River Regions*; Volume 3 is *Grand Canyon, Colossal Mirror: The Term “Grand Canyon” as Used in Geographical Nomenclature, Analogy, Metaphor and Neology, with an Appendix on Colorado River Nomenclature*.

---

# THE GRAND CANON [o EL GRAN CANON]

## NOTA A LOS NUEVOS USUARIOS

LOS USUARIOS DIGITALES encontrarán hipervínculos a lo largo de este volumen PDF que se pueden buscar, en inglés; está formateado de otra manera para que parezca un libro convencional, con un diseño amigable para los lectores y utilizable en formas no digitales. La página de [Contenido](#) es su primera guía; aparece después de la página del título más abajo. El área geográfica de cobertura se muestra en las ilustraciones de [Frontispicio](#) (después de esta nota para el usuario). Lea como sea necesario el [Preámbulo](#) (en inglés), o el [Resumen Ejecutivo](#) o el [Resumen](#) de una página (en español), con el cual también se puede promover THE GRAND CANON.

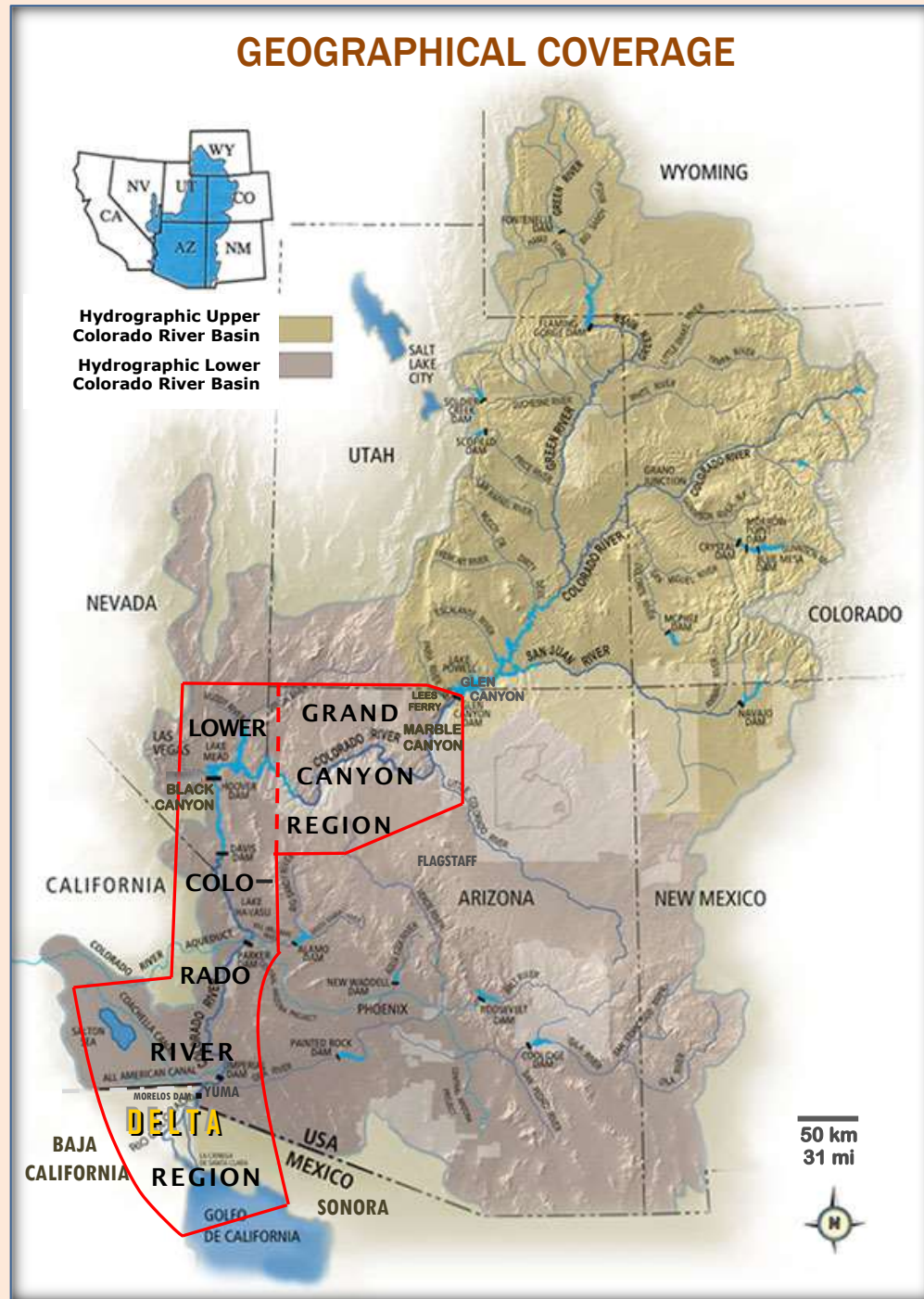
Además de la bibliografía en sí, mucho se presenta en este volumen por varias razones. Esto está destinado a servir durante mucho tiempo y responder preguntas, especialmente cuando ya no puedo hacerlo. Los usuarios pueden desear explicaciones sobre por qué el material está aquí, cómo fue ensamblado, qué puede hacer por ellos y cómo podrían querer avanzar con proyectos más ambiciosos. Aprovecho cuatro décadas de experiencia que he tenido trabajando con investigadores en museos y bibliotecas, aprendiendo de sus necesidades y expectativas, todo esto durante la transición de métodos y recursos “analógicos” a “digitales”. Los usuarios con inclinación editorial pueden oponerse a cierta información repetitiva en la Introducción. Respondo con la observación de que ahora muchos usuarios que han que no han sabido nada más que (o han sido adoctrinados) con recursos accedidos digitalmente procederán a este en la forma selectiva e hipervinculada a la que están acostumbrados, quizás nunca notando otras partes como fácilmente como lo hubieran hecho con un producto impreso.

**I.** La muy larga [Introducción al Contenido y Cobertura](#) explica la historia, los componentes y la organización de la bibliografía. Vea la página de [Contenido del Volumen](#) para más detalles. También proporciona [encuestas informativas y comentarios](#) sobre bibliografía y sobre dónde se encuentra THE GRAND CANON con respecto a otros recursos que se han compilado para las regiones del Gran Cañón–bajo Río Colorado y otras regiones. Se proporcionan perspectivas históricas y geográficas de la región. También se ofrece un argumento en apoyo del uso continuo de bibliografías en la era digital, y el servicio que THE GRAND CANON puede brindar de manera revitalizada en el futuro, una inspiración para nuevos proyectos y asociaciones.

**II.** La propia [Bibliografía](#) es, por supuesto, el núcleo de THE GRAND CANON. Su presentación es expresamente amigable para los lectores, rompiendo con el formato monótono y agotador a menudo asociado con las bibliografías. Tiene sus propias páginas de [Contenido](#). Sus 106 000 citaciones registran los trozos y partes de la historia publicada sobre las grandes regiones a lo largo del bajo Río Colorado, desde Presa Glen Cañón hasta el mar. Incluso si la bibliografía se daña por el cese de las nuevas citas, los miles de historias y hechos aislados que cita permanecen en el citas individuales y en entrelazando cientos, en 114 idiomas de fuentes de todo el mundo publicado durante 487 años, ca. 1535–2021. Las publicaciones que estas citas registran abarcan las actividades humanas y los logros en las mil maneras en que las personas, las organizaciones y los gobiernos han pensado en observarlos y registrarlos, y sobre las opiniones que se les dan. Esta es una fuente definitiva: un **canon**. Se puede extraer y, además, puede servir como base para recursos muy embellecidos o refinados.

THE GRAND CANON es ahora una serie de tres volúmenes: Volumen 1 es la introducción y la bibliografía; Volumen 2 es *Cartobibliography of the Grand Canyon and Lower Colorado River Regions*; Volumen 3 es *Grand Canyon, Colossal Mirror: The Term “Grand Canyon” as Used in Geographical Nomenclature, Analogy, Metaphor and Neology, with an Appendix on Colorado River Nomenclature*.

# THE GRAND CANON



— Approximate geographical area covered in [THE GRAND CANON](#), embracing the Grand Canyon and lower Colorado River regions. It follows the river corridor from Glen Canyon Dam to the river's delta and the Gulf of California. The boundary in the gulf encompasses Mexico's Reserva de la Biosfera Alto Golfo de California y Delta del Río Colorado, and in Sonora embraces part of Reserva de la Biosfera del Pinacate y Gran Desierto. This bibliography defines "lower Colorado River" as that region below Grand Canyon, which differs from the hydrological Lower Colorado River Basin that begins below the confluence of the Paria River at Lees Ferry.

- - - - - Approximate division between "Grand Canyon" and "Lower Colorado River" thematic regions of this bibliography [see [Contents](#)].

Base map of Colorado River drainage basin modified from U.S. Bureau of Reclamation, Glen Canyon Dam Adaptive Management Group. The Upper and Lower Colorado River Basins delineate the apportionment of the waters of the Colorado River basin by the Colorado River Compact of 1922; divided just downstream from the confluence of the Paria River near Lees Ferry. Dams and impoundments are indicated on the map. Lighter-gray areas, not labeled, are American Indian reservations. Basin boundary is not depicted in Mexico. (For a [map of the physiography and political geography of the Colorado River basin](#) (including Mexico) see in the "Format and Coverage" section of this volume.)



Space view of the greater Grand Canyon and lower Colorado River regions. Moderate-resolution Imaging Spectroradiometer (MODIS) true-color image from the Aqua satellite, 7 June 2001. The Colorado River is seen from Lake Powell, Utah (*UPPER RIGHT*), to the Gulf of California, Mexico (*BOTTOM*). Lake Mead is at the river's turn from west to south in the *UPPER LEFT* quadrant of the photo. The Salton Sea and Imperial and Mexicali Valleys are in the *LOWER LEFT*, with the Gila River coming to the Colorado from the east, at *LOWER CENTER*. Irrigated lands are the noticeable patchworks (note as well the disparity in color between the U.S. and Mexico). White areas at *UPPER RIGHT* are clouds over higher elevations. (The fine lines delineate state and international boundaries. North is to the top.)

(U.S. National Aeronautics and Space Administration, Visible Earth catalog. Image Colorado.A2001158.1840lrg.jpg.  
Image created by Jacques Descloitres, MODIS Land Rapid Response Team.)  
<https://visibleearth.nasa.gov/view.php?id=1501>

# EL GRAN CANON

Una Bibliografía Mundial  
*del Regiones del*  
Gran Cañón  
*y*  
Bajo Río Colorado  
*en los Estados Unidos y México*

**1535–2021**

**Volumen 1 : Introducción y Bibliografía**

106 000 CITACIONES CATEGORIZADAS Y AUMENTADAS PARA  
PUBLICACIONES DEL ALREDEDOR DEL MUNDO EN 114 IDIOMAS

CON ANTECEDENTES EXTENSIVOS E INFORMACIÓN DE APOYO

[ EL IDIOMA PRINCIPAL DEL VOLUMEN ES EL INGLÉS ]

Earle E. Spamer



RAVEN'S PERCH MEDIA PHILADELPHIA 2022

# THE GRAND CANON

A Worldwide Bibliography  
*of the*  
Grand Canyon  
*and*  
Lower Colorado River  
*Regions in the United States and Mexico*

**1535–2021**

**Volume 1 : Introduction and Bibliography**

106,000 CATEGORIZED AND AUGMENTED CITATIONS FOR  
PUBLICATIONS FROM AROUND THE WORLD IN 114 LANGUAGES

WITH EXTENSIVE BACKGROUND AND SUPPORTING INFORMATION

Earle E. Spamer



RAVEN'S PERCH MEDIA   PHILADELPHIA   2022



A Raven's Perch Digital Production

## THE GRAND CANON : A WORLDWIDE BIBLIOGRAPHY OF THE GRAND CANYON AND LOWER COLORADO RIVER REGIONS IN THE UNITED STATES AND MEXICO, 1535–2021

### Volume 1: Introduction and Bibliography

by Earle E. Spamer

© 2022 Earle E. Spamer

Appendix II: "Variants of E. L. Kolb's *Through the Grand Canyon From Wyoming to Mexico*" © Richard D. Quartaroli

Raven's Perch Media

Philadelphia, Pennsylvania, USA

Spamer, Earle Edward (1952– )

The Grand Canon : a worldwide bibliography of the Grand Canyon and lower Colorado River regions in the United States and Mexico, 1535–2021 : Volume 1: Introduction and bibliography

13,784 p.

Collation [6], I-XXII, [2], A-M, Español A-N, [2], i-xxiii, Introduction 1-568, [2], Bibliography 1-13,130

Portable Document Format (PDF); electronic resource, <https://ravensperch.org>

THE GRAND CANON : Volume 1

FOURTH EDITION

Registered electronically with the U.S. Copyright Office FEBRUARY 2022

See Reproduction and Fair Use statement on the next page

A small number of citations herein are from publications with 2022 dates, compiled while this edition was being completed; most were available in late 2021

#### CATALOGERS NOTE \*

**canon** : *a standard or essential list of works*

**The Grand Canon**  
**not The Grand Canyon**

ALL VOLUMES OF THE GRAND CANON, AS WELL AS INDIVIDUAL PARTS OF VOLUME 1, MAY BE DOWNLOADED FROM RAVEN'S PERCH MEDIA

---

THE GRAND CANON is not a commercial product and is not distributed by sale. The author receives no remuneration or services for the preparation or distribution of this product. The contributors of bibliographical citations and information are not in any way responsible for the production or distribution of this work. Citations or remarks that mention ®Registered Trademarks, ™Trademarks, ™Service Marks, or other protected names and identifiers are not here endorsements of those products or services. The inclusion of a citation in this work documents only its existence; views expressed therein do not necessarily represent the views of the author or any of the bibliographical contributors. Quotations from works are made as critical analyses for bibliographical identification, to corroborate and elucidate for users the pertinence of the cited work to the bibliography or to confirm subject placement within the scope of this work, and as aids for users to identify the whole of a published work that may be pertinent to their work or interests. Ascertaining the availability or accessibility of cited items is the responsibility of the user.

This publication is originally produced in a searchable-text PDF format, which requires the use of the free Adobe™ Acrobat™ Reader. It is designed as a book for screen viewing or printing. To view it in book format with opposing pages, use the appropriate PDF viewing mode so that odd-numbered pages appear on the right. Any page may be reduced or enlarged without degrading text or original image quality.

\* [See remarks on p. xix in the Preamble](#)

## REPRODUCTION AND FAIR USE

© 2022 Earle E. Spamer • No commercial or for-profit use of this work, in whole or in part, is allowed without the author's permission. Not-for-profit organizations, educational institutions, government agencies, and Indigenous communities may with credit extract from this work for purposes of resource management and interpretation, education, and public outreach; they also may download the entire document for cataloging and inclusion in their digital products collections, and they may freely allow users to copy this document for their use if it does not violate either the conditions given here or specific limits of copyright law that may not be waived by this fair-use statement. Reuse of this work, in whole or in part, for any purpose, must cite author, title, publisher, and notice of copyright. Academic or other individual researchers may copy selections for personal reference and may quote from this work following best practices of acknowledgment in scholastic research.

Replication of the entire document is permitted in order to ensure preservation or to migrate to different software, or medium not now in existence, when the technology to use the original digital copy is unsupported, inadequate, or obsolete. A documentary copy of this work in a non-digital medium is permitted for reference use or to preempt the loss of the work due to technological change that may no longer permit this work to be accessed by the means for which it was originally designed.

This statement does not pertain to, nor supersedes, copyrights held by the original sources of items cited or quoted in this work.



DETAILED SPACE VIEWS AND  
HISTORICAL CONTEXT MAPS  
OF THE REGION COVERED BY  
THE GRAND CANON

• THE GRAND CANYON •



▲ Space view with MODIS sensor imagery, 19 January 2002, of lower Glen Canyon and Marble Canyon *AT RIGHT*, Grand Canyon *FROM RIGHT TO LEFT*, and Lake Mead *AT FAR LEFT*. The snow-covered Kaibab plateau is to the *RIGHT*. (The fine line delineates the Arizona–Nevada boundary. North is to the top.) (U.S. National Aeronautics and Space Administration, Visible Earth catalog. Image Grand Canyon.A2002019.1820.250m.jpg (cropped here). Image created by Jacques Descloitres, MODIS Land Rapid Response Team, NASA/GSFC.)

► Space view of a hydrologically diminishing Lake Mead as seen by the Operational Land Imager aboard Landsat 8 on 24 July 2015. North is to the top. Black Canyon extends to the *SOUTH* from Lake Mead; Hoover Dam is seen as a tiny white spot at the *NORTHERN END* of Black Canyon. The Overton Arm extends to the *north*, showing the confluence of the Virgin (*COMING FROM NORTH*) and Muddy (*COMING FROM NORTHWEST*) rivers. Las Vegas Wash empties into Lake Mead on the *WEST SIDE* of the image. The city of Boulder City, Nevada, is immediately to the *SOUTHWEST* of the lake; Las Vegas is the prominent urban area on the *LEFT*. (Metropolitan Las Vegas does not fall within the scope of this bibliography.)

(U.S. National Aeronautics and Space Administration, Visible Earth catalog. Image lakemead\_oli\_2015205\_lrg.jpg. Image created by Joshua Stevens using Landsat data from U.S. Geological Survey and Lake Mead elevation data from U.S. Bureau of Reclamation.)

<https://visibleearth.nas.gov/view.php?id=86426>



► Space view of the Colorado River, *AT RIGHT SIDE OF PHOTO*, coming into the Colorado River delta and Salton Sea regions from the north; as seen in Moderate Resolution Imaging Spectroradiometer (MODIS) image, 2 October 2003. (The fine lines delineate the U.S.-Mexico boundary.) The light green areas in the Salton Sea are algal blooms or sediment plumes. The Imperial Valley of California, noticeable for its irrigated lands, extends from the *SOUTHERN SIDE OF SALTON SEA* to the U.S.-Mexico boundary, continuing to the *south* as the Mexicali Valley in Baja California, Mexico. Yuma, Arizona, is to the east at *CENTER FAR RIGHT*, where the northern U.S.-Mexico boundary touches the Colorado River. The irrigated Coachella Valley is to the *NORTHWEST OF SALTON SEA*. The irrigated Palo Verde and Cibola Valleys are along the Colorado River at the *UPPER RIGHT* of image. The Algodones Dunes are seen as the linear, plain tan area between the Imperial Valley and the Colorado River, *JUST TO THE RIGHT OF CENTER*. The Gran Desierto de Altar in Sonora, Mexico, is the large, plain tan area in the *LOWER RIGHT* part of the image. The irregular, white Laguna Salada of Baja California lies to the west (*LEFT*) of the irrigated Valle de Mexicali. The Ciénega de Santa Clara wetland of Sonora (see also image below) is the linear dark-green area at *LOWER RIGHT*. The dry mouth of the Colorado River, with its noticeable Isla Montague dividing it in the Gulf of California, is at *FAR LOWER RIGHT*.

(U.S. National Aeronautics and Space Administration, Visible Earth catalog. Image SaltonSea.A2003275.2100.250m.jpg (cropped here). Image created by Jacques Descloitres, MODIS Land Rapid Response Team, NASA/GSFC.)

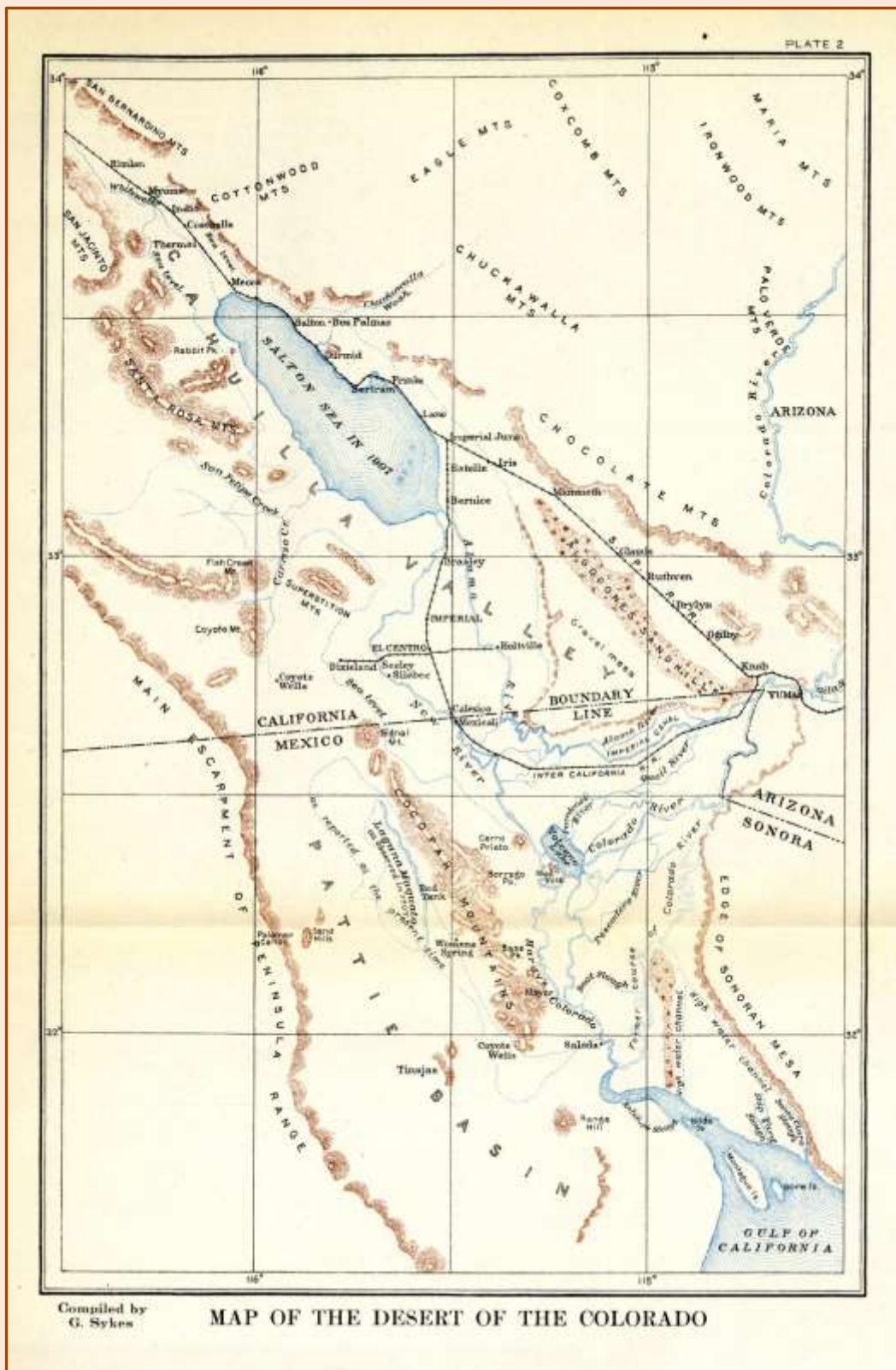
<https://visibleearth.nas.gov/view.php?id=69269>



◄ Space view of the lowermost region of the delta of the Río Colorado in Sonora (*RIGHT SIDE*) and Baja California (*LEFT SIDE*), Mexico; seen in false-color Spaceborne Thermal Emission and Reflection Radiometer (ASTER) imagery from the Terra satellite, 8 September 2000. North is to the top. A confusion of arcuate scars of former Colorado River channels are seen on either side of the river as it approaches its final channel to the sea. The Ciénega de Santa Clara wetland, artificially created by agricultural waste water flow from the U.S.'s Wellton-Mohawk project, is the noticeable dark green area to the east of the river up against the expanse of the Gran Desierto de Altar. At the mouth of the river, at the head of the Golfo de California, the river's flow (were it to regularly reach the sea) is divided by Isla Montague, itself a sedimentary remnant of past great flows from the Colorado River basin.

(U.S. National Aeronautics and Space Administration, Visible Earth catalog. Image aster\_colorado\_delta\_lrg.jpg. Image created by NASA/GSFC/MITI/ERSDAC/JAROS, and U.S./Japan ASTER Science Team.)

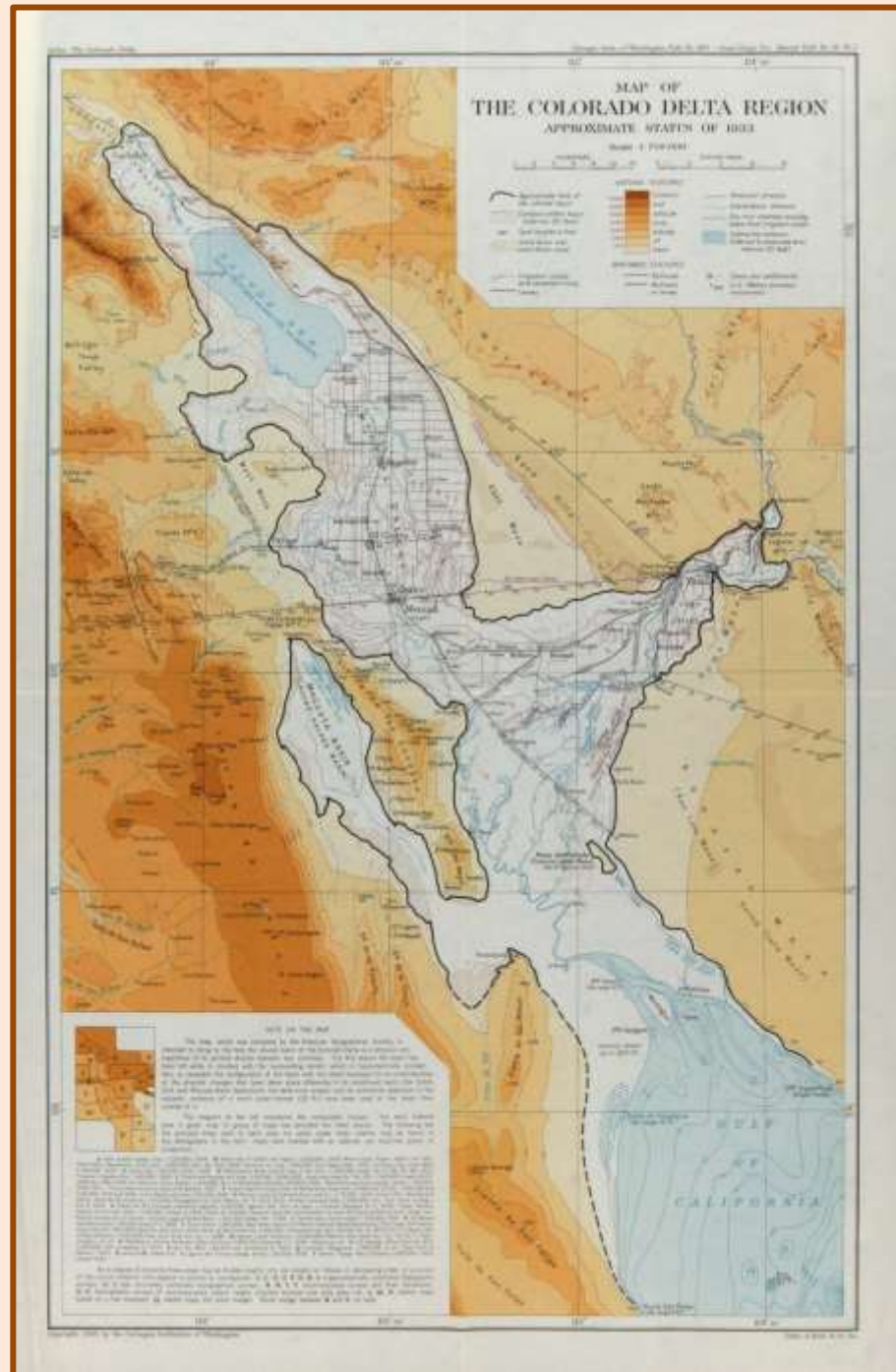
<https://visibleearth.nas.gov/view.php?id=1288>



**The Salton Sea—  
Colorado Desert region  
in contemporary per-  
spective with events of  
the early 20th century.**

Godfrey Sykes, Plate 2 in D. T. MacDougal *et al.*, *The Salton Sea: A study of the geog-  
raphy, the geology, the  
floristics, and the ecology of a  
desert basin*, *Carnegie Insti-  
tution of Washington,  
Publication 193*, 1914 [cited  
herein as [ITEM NO. 11.495](#)].

• THE GRAND CANON •



**The Colorado River delta** forms a T-shaped area as shown in this map. Historically, occasional Colorado River overflows descended to the northwest rather than to the south and the Gulf of California. During recent times the river has flowed twice into the Salton Sink, below sea level—once in the 1890s when it overflowed naturally to reform the Salton Sea, and again in the early 1900s when an accidental breach of canalworks let it flow catastrophically unchecked for nearly two years to fill the present Salton Sea. For more than a century irrigation in the Imperial and Mexicali Valleys has provided rich farmland in the desert (note the latticework of canals and irrigation drains depicted on the map).

Plate I from Godfrey Sykes, *The Colorado Delta*, *Carnegie Institution of Washington Publication 460 / American Geographical Society of New York Publication 19*, 1937 [cited herein as [ITEM NO. 2.25806](#)].

## NOTE ABOUT EXTERNAL HYPERLINKS IN THIS VOLUME

Throughout this PDF (Portable Document Format) volume, occasional URL (Uniform Resource Locator) hyperlinks direct users to various websites and webpages hosted throughout the internet. In the bibliography they most often link to “supplemental” or “supporting” materials for a publication that were posted to publishers’ websites. Similarly, various citations will refer to publications by their “doi:” (Digital Object Identifier) number.

All links and identifiers were current at the time of citation but are not updated; the doi’s are created to be persistent, but URLs are ephemeral. If a user finds a cited hyperlink that is no longer current, it nevertheless preserves historical and bibliographical perspective. It is not feasible for the compiler to routinely locate updated links because it is not known whether the original URL (or even its domain) has changed, or whether the document has been removed from the host website. Broken links also serve as object lessons of their uselessness to future researchers, although in some cases an archived copy—though one not necessarily perfect—may be accessible elsewhere (for example, through the Internet Archive Wayback Machine, <https://archive.org/web/>). Individual users may also have digitally saved or printed out some of these materials, which then may be preserved in the individual’s collected papers or other collections. In the future such kinds of “light gray literature”<sup>\*</sup> might be rediscovered in unexpected places.

(If readers are using a PDF of any of the **SEPARATELY EXTRACTED PARTS OF THE BIBLIOGRAPHY**, such as are available at the Raven’s Perch Media website, <https://ravensperch.org>, hyperlinks will be active if they direct to a URL accessible on the web, or internally only if linked to another place within that part. Links to other parts within the whole volume will not be active because the user is viewing only one extracted part.)

---

<sup>\*</sup> Earle E. Spamer, “What a woven web: archives, websites, and the coming legacy of ‘light gray literature.’” *Provenance*, Vol. 20 (2004 [for 2002]), pp. 59-71.



## VOLUME 1 : INTRODUCTION AND BIBLIOGRAPHY

DIGITAL DOCUMENT — ALL LINES BELOW ARE HYPERLINKS — POSITION CURSOR AND ACTIVATE

**NOTE TO NEW USERS**

**FOLLOWING THE HALF-TITLE PAGE**

**NOTA A LOS NUEVOS USUARIOS**

**FOLLOWING THE HALF-TITLE PAGE**

**MAP OF THE REGION COVERED BY [THE GRAND CANON](#)**

**frontispiece**

**SPACE VIEW OF THE GREATER GRAND CANYON—LOWER COLORADO RIVER REGION**

**frontispiece**

**COMPLEMENTARY TITLE-PAGES IN SPANISH AND ENGLISH**

**PUBLISHER'S PAGE**

**II**

**REPRODUCTION AND FAIR USE STATEMENT**

**III**

**DETAILED SPACE VIEWS OF THE REGION COVERED BY [THE GRAND CANON](#)**

**V**

**HISTORICAL CONTEXT MAPS OF THE COLORADO DESERT AND DELTA**

**VIII**

**NOTE ABOUT EXTERNAL HYPERLINKS IN THIS VOLUME**

**X**

**PRINCIPAL CONTRIBUTORS**

**XV**

**ILLUSTRATION CREDITS**

**XVI**

**LIST OF PRECEDING AND CONTINUING EDITIONS**

**XVIII**

### EXECUTIVE OVERVIEWS

**EXECUTIVE OVERVIEW**

**A**

**RESUMEN EJECUTIVO**

**ESPAÑOL—A**

*(continued)*

HYPERLINKED AND PAGINATED NAVIGATION PAGE

# I

INTRODUCTORY SECTION IS SEPARATELY PAGINATED

**PREAMBLE (or, READ ME)**

*i*

## INTRODUCTION TO CONTENT AND COVERAGE

**ABSTRACT**

**3**

**RESUMEN**

**5**

**GENERAL NOTE TO THE INTRODUCTION**

**7**

**PURPOSE, ADMINISTRATIVE CONTEXT, AND UTILITY OF THIS WORK**

**9**

**COVERAGE AND FORMAT OF THE BIBLIOGRAPHY**

**49**

Topical Coverage	50
Geographical Coverage	76
Nomenclatural Clarifications	88
<i>Río Colorado</i> and Colorado River	88
<i>Puerto de Bucareli</i>	91
Boulder Dam and Hoover Dam	91
Notes About the Earliest Works (mid-16th Century)	92
Ephemera, "Unpublished" and Web-Based Material	99
Newspapers	103
Citations	105
Abbreviations and Acronyms	118
Abbreviations of Periodical and Serial Titles	121
Authors	122
Dates	128
Titles	128
Editions	131
Publications Printed on Demand	131
United States Government Agencies	133
Places of Publication	133
Diacritical Marks	135
Foreign, Indigenous and Auxiliary Languages	135
Translating and Transliterating	139
Brief Content Entirely Quoted, and References " <i>in passing</i> " and " <i>passim</i> "	148
Taxonomic Nomenclature in Biology and Paleontology	149
Notes	150
Undetermined Information	151
ITEM NUMBERS	152
Cross-listings to Print Editions of the Grand Canyon–Lower Colorado River Bibliography	152
Cross-listings to Reference Lists	154
Ideas for Continuing Work	163

**AUTHOR PSEUDONYMS, PSYCHONYMS AND VARIANT NAMES**

**171**

**PERIODICALS AND SERIALS CITED**

**177**

**SOURCES OF ACADEMIC THESES AND DISSERTATIONS**

**459**

**NAME CHANGES AND NUMERATION NOTES FOR SELECTED PERIODICALS AND SERIALS**

**471**

(continued)

HYPERLINKED AND PAGINATED NAVIGATION PAGE

INTRODUCTION TO CONTENT AND COVERAGE (CONTINUED)

SURVEYS AND COMMENTARIES

SURVEYS

INTRODUCTION	501
1. EARLIER GENERAL BIBLIOGRAPHIES FOR THE GRAND CANYON AND COLORADO RIVER	502
2. COMPARABLE BIBLIOGRAPHICAL PRODUCTIONS FOR NATIONAL PARK SERVICE UNITS	509

COMMENTARIES

"A NECESSARY NUISANCE"—THE TRADITIONAL BIBLIOGRAPHY IN A DIGITAL AGE	527
HOW MANY VOICES UNHEARD? THE CHOIR OF GRAY LITERATURE IN BIBLIOGRAPHY— WITH EXAMPLES FROM <i>THE GRAND CANON</i>	547

II

THE GRAND CANON

A WORLDWIDE BIBLIOGRAPHY OF THE GRAND CANYON AND  
LOWER COLORADO RIVER REGIONS IN THE  
UNITED STATES AND MEXICO

THE BIBLIOGRAPHY IS SEPARATELY PAGINATED

DISTRIBUTION OF CITATIONS IN THE GRAND CANON 4TH EDITION	2
--	---

GO TO ► SEPARATE TABLE OF CONTENTS FOR JUST THE BIBLIOGRAPHY	3
--	---

EXPLANATION OF THE ITEM NUMBERS AND CROSS-LISTINGS	8
CONTENT DESCRIPTION (scope and content of each part of the bibliography)	11
THE BIBLIOGRAPHY	BEGINS ON PAGE 35
APPENDICES TO THE BIBLIOGRAPHY	13,073

Colophon	13,130
About the Author	Inside rear cover





These people are gratefully acknowledged for having been substantial contributors of bibliographical data to the Grand Canyon–Lower Colorado River bibliography project during 1974–2021.

Affiliations are listed from the time when the person was involved.

**George H. Billingsley**

Museum of Northern Arizona, Flagstaff

AND

U.S. Geological Survey, Flagstaff

**William J. Breed**

Museum of Northern Arizona, Flagstaff

**Daniel F. Cassidy**

Five Quail Books, Phoenix and Prescott, Arizona

**Robert C. Euler**

U.S. National Park Service, Grand Canyon National Park

**C. David Hellyer**

Five Quail Books, Spring Grove, Minnesota

**Louise M. Hinchliffe**

U.S. National Park Service, Grand Canyon National Park

**John Irwin**

Flagstaff–Coconino County Public Library, Flagstaff

**Grace Keroher**

U.S. Geological Survey

**Valerie Meyer**

U.S. National Park Service, Grand Canyon National Park

**Richard D. Quartaroli**

U.S. Bureau of Reclamation, Glen Canyon Environmental Studies, Flagstaff

AND

The Special Collections Librarian\*, Cline Library, Northern Arizona University, Flagstaff

\* now Emeritus

• THE GRAND CANON •

## ILLUSTRATION CREDITS

### COVER – The Colorado River Then and Now



**Then.** 1869/1872. John Wesley Powell and crew drop through a rapid in the Grand Canyon.

“Running a rapid.” J. W. Powell, *Exploration of the Colorado River of the West and Its Tributaries* (U.S. Government Printing Office, Washington, 1875), figure 28 (facing p. 82). Woodcut illustration by “WLS”, “R[ichard]. A. Muller sc.”



**Now.** Last stop for the Colorado River. Presa Morelos / Morelos Dam astride the U.S.–Mexico boundary. Canal Alimentador Central opens to the west in Baja California (*right*) while what little remains of the Colorado River meanders southward between Arizona and Baja California (*top*), rarely ever reaching the sea again.

(*Comisión Internacional de Límites y Aguas*)

• THE GRAND CANON •

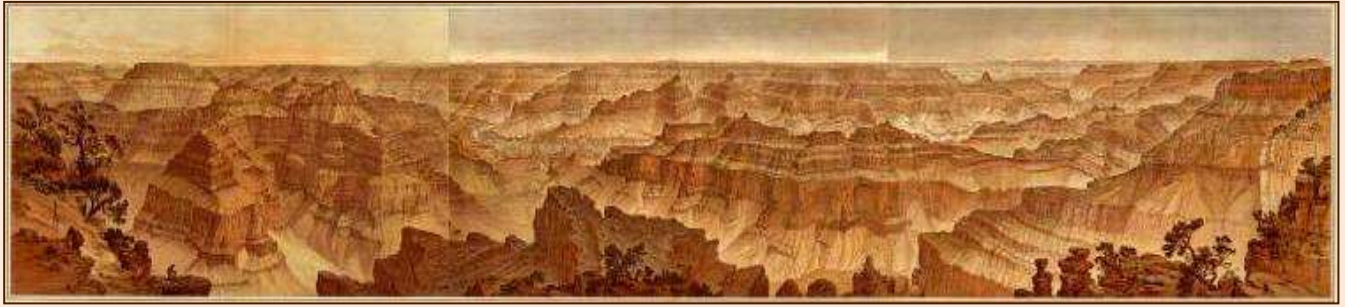


Illustration placed as banners in front-matter sections and as major-section separators in the bibliography

“Panorama From Point Sublime” [Parts I, II, III], by William Henry Holmes [lithographs by Julius Bien and Co., New York] in Clarence Edward Dutton, *Atlas to Accompany the Monograph on the Tertiary History of the Grand Cañon District*, U.S. Geological Survey, Monograph 2 (1882), Atlas, Sheets 15–17 [digitally combined]



Photo on page 1 of the Introduction and as vignettes at the start of individual parts of the bibliography

Grand Canyon. View eastward from Pima Point.

U.S. National Park Service, Grand Canyon National Park



RAVEN’S PERCH COLOPHON

“Camp—Colorado Plateau”, by Heinrich Balduin Möllhausen [detail]

In Joseph C. Ives, *Report Upon the Colorado River of the West, Explored in 1857 and 1858 . . .* (U.S. Government Printing Office, Washington, 1861), [Part I] General Report Plate VII. [Lithograph by John J. Young, after original watercolor and gouache artwork by Möllhausen.]





**THE GRAND CANYON–LOWER COLORADO RIVER BIBLIOGRAPHY** appeared first in two inkprint editions (1981 and 1990, with a 1993 supplement) published by the Grand Canyon Natural History Association. The 1990/1993 releases were also produced on microfiche and as digital (text-only ASCII format) files on diskette.

In January 2000 a greatly revised Internet Edition was posted as a field-searchable database on the Grand Canyon Association website, but under its own domain name ([www.grandcanyonbiblio.org](http://www.grandcanyonbiblio.org)), presenting work that had been completed in September 1999. Updates to the Internet Edition were made frequently until mid-2015, when technological issues precluded updating the database. It was removed in October 2021.

Preparation of **THE GRAND CANON** began during 2010. The object was to restore the monographic presentation of the entire bibliography and to incorporate features not present in the Internet Edition, particularly the use of non-Roman orthographies. The first edition of **THE GRAND CANON** was released in 2012; a second edition in 2015 commemorated the 40th anniversary of the Grand Canyon–Lower Colorado River bibliography project; a third edition, 2019, commemorated the centennial of Grand Canyon National Park and the sesquicentennial of John Wesley Powell’s first Colorado River expedition. This fourth edition reflects the transfer of Part 25 to become Volume 2 of **THE GRAND CANON**, *Cartobibliography of the Grand Canyon and Lower Colorado River Regions*; and what had been an appended document, *Grand Canyon, Colossal Mirror*, is now Volume 3.

*(continued)*

## Editions of the Grand Canyon–Lower Colorado River Bibliography

Print, fiche, and ASCII-format digital editions 1981–1993

- 1981 **Bibliography of the Grand Canyon and the Lower Colorado River, 1540-1980.**  
 Earle E. Spamer, compiler (WITH CONTRIBUTORS George H. Billingsley, William J. Breed, Robert C. Euler, and Grace Keroher)  
 Grand Canyon, Arizona: Grand Canyon Natural History Association, *Monograph 2*, 119 pp.  
 ISBN 0-938216-14-7, Library of Congress Number 81-81457  
 Arranged in 10 parts. Print format only, paper wraps, perfect-bound.  
 [See [Appendix A to Part 1](#) in the present bibliography for contents and arrangement of the 1981 edition.]  
 [The bibliography was begun in September 1974.]
- 1990 **Bibliography of the Grand Canyon and the Lower Colorado River; from 1540.**  
**SECOND EDITION.**  
 Earle E. Spamer, compiler (WITH CONTRIBUTORS George H. Billingsley, William J. Breed, Robert C. Euler, Louise M. Hinchliffe, Dorothy A. House, Grace Keroher, Valerie Meyer, Richard Quartaroli, and Lawrence E. Stevens)  
 Grand Canyon, Arizona: Grand Canyon Natural History Association, *Monograph 8*, 12 separately paginated sections, with separately paginated front matter, in one volume, [370 pp.]  
 ISBN 0-938216-37-6, Library of Congress Number 90-82533  
 Arranged in 12 parts with additional special sections. Distributed in print format (loose-leaf, with binder and separator tabs, 1,000 copies), on microfiche (25 copies), and digitally on five ASCII-format 5.25-inch disks (25 copies). Contributors added introductory essays for parts of the bibliography.  
 [See [Appendix B to Part 1](#) in the present bibliography for collated pagination sequence and tab placements for this edition and *Supplement 1* (1993).]
- 1993 **Bibliography of the Grand Canyon and the Lower Colorado River; from 1540.**  
**SUPPLEMENT 1. 1992.**  
 Earle E. Spamer, compiler (WITH Daniel F. Cassidy and John Irwin)  
 Grand Canyon, Arizona: Grand Canyon Natural History Association, *Monograph 8, Supplement 1*, separately paginated sections [continuing the pagination of parts in 1990 ed.] [174 pp.] [combined 1990/1993 volume 544 pp.]  
 ISBN 0-938216-47-3, Library of Congress Number 93-70396  
 Distributed in print format (loose-leaf, 1,000 copies), on microfiche (25 copies), and digitally on two ASCII-format 5.25-inch disks (25 copies). No more supplements produced.  
 [See [Appendix B to Part 1](#) in the present bibliography for collated pagination sequence and tab placements for 1990 edition and *Supplement 1*.]

(continued)

- 2000–  
2021 **A Bibliography of the Grand Canyon and Lower Colorado River. [INTERNET EDITION.]**  
Earle E. Spamer, compiler and editor (WITH CONTRIBUTORS Richard D. Quartaroli and Daniel F. Cassidy)  
Online, [www.grandcanyonbiblio.org](http://www.grandcanyonbiblio.org). Sponsored and hosted by Grand Canyon Association/Grand Canyon Conservancy, Grand Canyon, Arizona.  
Arranged in 34 parts; later reduced by the deletion of two parts. Available online only as a searchable database. First posted January 2000, and continually updated thereafter. Updates ceased June 2015; discontinued October 2021.  
[See [Appendix C to Part 1](#) in the present bibliography for contents and arrangement of the Internet Edition.]  
[NOTE: Two printed copies of the first state (January 2000) of the Internet Edition were made by Spamer, 1453 pp. One was given to the Special Collections and Archives, Cline Library, Northern Arizona University, Flagstaff (call no. F788.S636 2000); the other is in the author's possession.]

## THE GRAND CANON

- 2012 **The Grand Canon : 1548-2012**  
**A Directory to 48,600 Published Items and New Content On the Grand Canyon and Lower Colorado River Region—Arizona, Nevada, California, Baja California, Sonora—Southwestern United States—Northwestern Mexico.**  
Earle E. Spamer  
Philadelphia: Earle E. Spamer (A Raven's Perch Digital Production)  
Digital product—Portable Document Format (PDF) (pagination [1-2], i-l, 1-1826, I-XVIII, 1827-4988, I-XII, 4989-5207.) Digital copy (DVD) filed with U.S. Copyright Office.  
Updated bibliographical listing of items published worldwide in 55 languages. Enumerated and cross-listed to previous bibliographies and standard reference lists. Extra features include introduction, commentaries, surveys of comparable works, and a nomenclatural appendix on the term "Grand Canyon" as used in geographical nomenclature, analogy and metaphor. Expanded and improved layout. [The subtitle published-item count will increase as the bibliography grows.]  
Monographic version in 32 parts as searchable PDF (Portable Document Format) digital document with hyperlinks. First formal publication on CD-ROM April 2012.  
[NOTE: An informal, test release was prepared in February 2011 as the "Comprehensive Edition" and privately distributed on CD-ROM to a few users. It is not one of the sequence of formal editions.]  
[NOTE: Two color-printed copies of the non-bibliographical components of the First Edition were produced by Spamer in 2012. One is in his possession; the other is in the possession of Richard D. Quartaroli.]
- 2015 **The Grand Canon : Second Edition : 1542-2014**  
**A Bibliography of 65,000 Published Items in Printed and Other Media About or Including the Grand Canyon and Lower Colorado River Regions — Arizona, Nevada, California, Baja California, Sonora — Southwestern United States—Northwestern Mexico.**  
Earle E. Spamer  
Philadelphia: Raven's Perch  
A Raven's Perch Digital Production, Portable Document Format (PDF) (pagination [iv], 6798 pp.) Digital copy (DVD) filed with U.S. Copyright Office.  
Updated bibliographical listing of items published worldwide in 65 languages. Enumerated and cross-listed to previous bibliographies and selected standard reference lists. Extra features include introduction and the second edition of the nomenclatural appendix on the term "Grand Canyon" as used in geographical nomenclature, analogy, metaphor and neology. Expanded and improved layout throughout, with added features not available online.  
Monographic version in 32 parts as searchable PDF (Portable Document Format) digital document with hyperlinks. Distributed on CD-ROM.  
[NOTE: Two color-printed copies of the non-bibliographical components of the Second Edition were produced by Spamer in 2012. One is in his possession; the other is in the possession of Richard D. Quartaroli.]

(continued)

2019

## **The Grand Canon**

**A worldwide bibliography of the Grand Canyon and lower Colorado River regions in the United States and Mexico, 1535–2018 : 90,000 categorized and augmented citations for publications from around the world in 95 languages : with extensive background and supporting information**

### **El Gran Canon**

**Una bibliografía mundial del regiones del Gran Cañón y bajo Río Colorado en los Estados Unidos y México, 1535-2018 : 90 000 citaciones categorizadas y aumentadas para publicaciones del alrededor del mundo en 95 idiomas : con antecedentes extensivos e información de apoyo : (idioma principal del tomo en inglés)**

Earle E. Spamer

Philadelphia: Raven's Perch Media <https://ravensperch.org>

3rd Edition

A Raven's Perch Digital Production, Portable Document Format (PDF) (pagination 11,724 p. : [I-X], I-XVI, [1-2], A-M, Español A-N, [1-2], i-xiii [xiv], Introduction 1-487 [488], [1-2], Bibliography 1-10,993 [10,994], [1-2], Nomenclatural Appendix 1-163 [164], [1-2])

Digital copy filed electronically with U.S. Copyright Office.

Updated bibliographical listing of items published worldwide in 95 languages. Enumerated and cross-listed to previous bibliographies and selected standard reference lists. Extra features include introduction and the third edition of the nomenclatural appendix on the term "Grand Canyon" as used in geographical nomenclature, analogy, metaphor and neology. Expanded and improved layout throughout, with added features not available online.

Monographic version in 32 parts as searchable PDF (Portable Document Format) digital document with hyperlinks. Distributed on various digital media and accessible online at <https://ravensperch.org>.

2021

## **Cartobibliography of the Grand Canyon and Lower Colorado River Regions in the United States and Mexico, 1535–2021**

**An accompaniment to *The Grand Canon : A worldwide bibliography of the Grand Canyon and lower Colorado River regions***

Earle E. Spamer

Philadelphia: Raven's Perch Media <https://ravensperch.org>

1st Edition

A Raven's Perch Digital Production, Portable Document Format (PDF) (pagination lxxiii, 1098 pp.)

Digital copy filed electronically with U.S. Copyright Office March 2021.

(continued)

2022

## **The Grand Canon**

**A worldwide bibliography of the Grand Canyon and lower Colorado River regions in the United States and Mexico, 1535–2021 : 106,000 categorized and augmented citations for publications from around the world in 114 languages : with extensive background and supporting information**

**Volume 1: Introduction and bibliography**

### **El Gran Canon**

**Una Bibliografía Mundial del Regiones del Gran Cañón y Bajo Río Colorado en los Estados Unidos y México, 1535–2021 : 106 000 citaciones categorizadas y aumentadas para publicaciones del alrededor del mundo en 114 idiomas : con antecedentes extensivos e información de apoyo : (idioma principal del tomo en inglés)**

**Volumen 1: Introducción y bibliografía**

Earle E. Spamer

Philadelphia: Raven's Perch Media <https://ravensperch.org>

4th Edition

A Raven's Perch Digital Production, Portable Document Format (PDF) (pagination I-XXII, A-M, A-N, i-xxiii, 1-568, 1-13,130 pp.)

Digital copy filed electronically with U.S. Copyright Office February 2022

[See [Contents Page](#) in the present bibliography for contents and arrangement.]

Updated bibliographical listing of items published worldwide in 114 languages. Enumerated and cross-listed to previous bibliographies and selected reference lists. Expanded and improved layout throughout.

Monographic version in 32 parts as searchable PDF (Portable Document Format) digital document with hyperlinks. Distributed on various digital media and accessible online at <https://ravensperch.org>.]

2022

## **Cartobibliography of the Grand Canyon and Lower Colorado River Regions in the United States and Mexico, 1535–2021**

Earle E. Spamer

Philadelphia: Raven's Perch Media <https://ravensperch.org>

2nd Edition

THE GRAND CANON, Volume 2

A Raven's Perch Digital Production, Portable Document Format (PDF) (pagination lxxv, 1158 pp.)

Digital copy filed electronically with U.S. Copyright Office February 2022.

2022

## **Grand Canyon, Colossal Mirror**

**The term "Grand Canyon" as used in geographical nomenclature, analogy, metaphor, and neology : with an appendix on Colorado River nomenclature**

Earle E. Spamer (compiler)

Philadelphia: Raven's Perch Media <https://ravensperch.org>

1st Edition

THE GRAND CANON, Volume 3

A Raven's Perch Digital Production, Portable Document Format (PDF) (pagination viii, 192 pp.)

Digital copy filed electronically with U.S. Copyright Office February 2022.

[When the first volume of THE GRAND CANON was produced in 2012 this compilation was inserted as an appendix therein, with the title, "The Biggest Mirror"; the 2nd and 3rd editions of THE GRAND CANON (2015, 2019) included updated versions. In January 2021, a newly updated version was made a separate offering on the Raven's Perch Media website, there with the new title, "Colossal Mirror", with the intention of occasionally updating it on that website. This 1st Edition now formally produces this compilation as a separate volume of THE GRAND CANON.]